

029-12071

SCHLUMBERGER

CIMARRON OIL LLC

COMPANY: SCHLUMBERGER SERVICE COMPANY
 FIELD: MT. POSO
 WELL: MOP 17
 SEC 26 T. 27 R. 38
 COUNTY: MARIUTA STATE: CALIFORNIA
 ELEV.: 1103

COMPANY: Schlumberger
 FIELD: 24-090
 WELL: MOP 17
 COUNTY: MARIUTA STATE: CALIFORNIA
 ELEV.: 1103

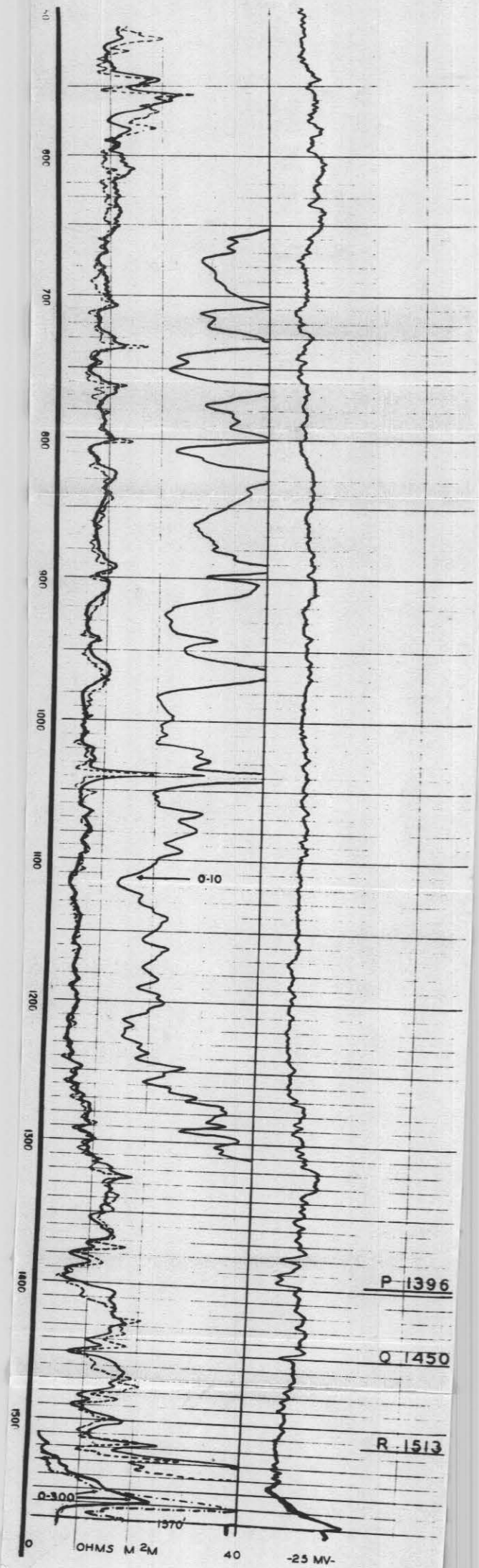
DATE: 10-14-42
 Csg. shoe: 1577
 Total depth: 1577
 Depth rchd: 1570
 Ft Meas: 1060
 Mud Nat: Est.
 Visc: _____
 Res Co Sample: _____
 Max Tempo: _____
 Meas from: Kelly
 Tension: _____
 Rig Time: :35
 Mileage: 30
 Observer: J.L. Dryden
 Witnessed by: Gordon Bell

DIVISION OF OIL AND GAS
 RECEIVED
 DEC 1 2 1942
 BAKERSFIELD, CALIFORNIA

DIAMETER OF HOLE
 12-1/4 - 151'
 7-5/8 - 1577'

REMARKS
 Standard Resistivity - All 0'
 Standard Lateral - CA 1'

RESISTIVITY
 NORMAL CURVE THIRD CURVE
 0 ← ohms m² → 40
 SELF-POTENTIAL
 ← 100 millivolts →



C.C.M.O.
 MT. POSO
 MON 7