

029-12071

SCHLUMBERGER

WELL SURVEYING CORPORATION

CIMARRON OIL LLC
 COMPANY: CHANSLOR-FIELD MURRAY OIL CO.
 FIELD: MT. POSO
 WELL: MON #7
 SEC. 26 T. 27 R. 28
 COUNTY: KERN STATE: CALIFORNIA
 ELEV.: 1102

COMPANY: C. G. L. O. O.
 FIELD: MT. POSO
 WELL: MON #7
 COUNTY: KERN (26-27-28)
 FILING NO.:

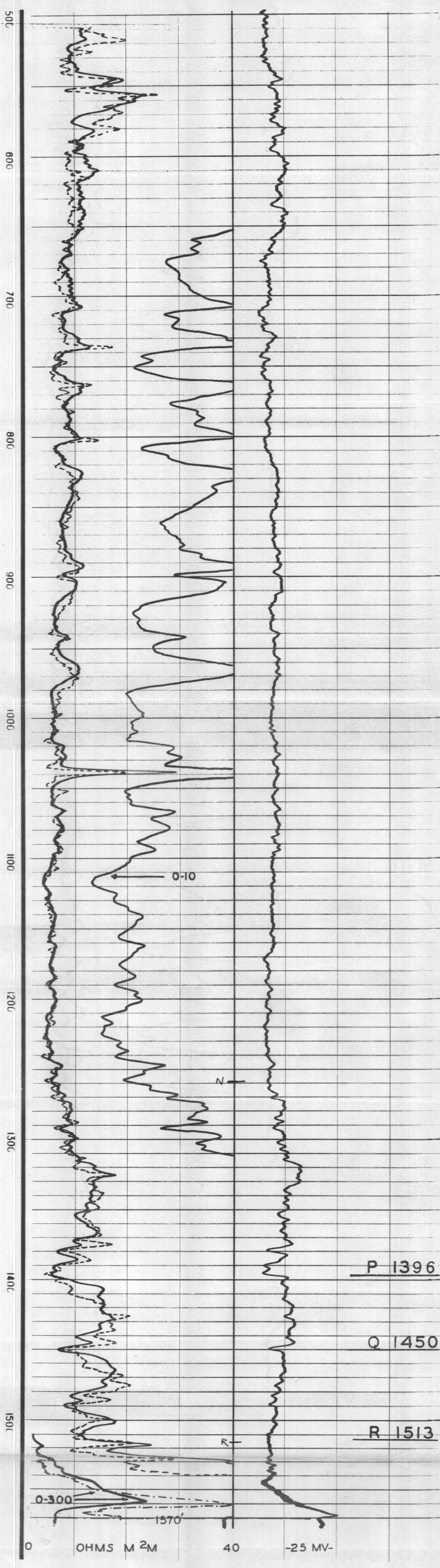
RUN	1	2	3	4	5
Date	10-14-42				
Csg. shoe					
Total depth	1577				
Depth rchd.	1570				
Ft Meas.	1060				
Mud Nat.	Nat.				
Dens					
Visc					
Res	No Sample				
Max. Temp					
Meas. from	Kelly				
Tension					
Rig Time	:35				
Mileage	35				
Observer	F.L. Bryun				
Witnessed by:	Gordon Bell				

DIVISION OF OIL AND GAS
 RECEIVED
 DEC 1 2 1942
 BAKERSFIELD, CALIFORNIA

DIAMETER OF HOLE
 12-1/4' - 1510'
 7-5/8' - 1577'

REMARKS
 Standard Resistivity - AM 20'
 Standard Lateral - CA 12'

DEPTH	RESISTIVITY		SELF-POTENTIAL
	NORMAL CURVE	THIRD CURVE	100 millivolts
0	←	→	←
	ohms m ² m		
	0	40	



C.C.M.O.
 MT. POSO
 MON 7

#7