

Western Wireline, Inc.

Temperature Survey

Company	Macpherson	Country	USA
Well	Maxwell A #3		
Field	Round Mountain		
County	Kern		
State	California	Country	USA
Location:	API #: 0402918258	Other Services	
Permanent Datum	SEC 14 TWP 28S RGE 28E	Elevation	
Log Measured From	K.B. 7'	KB 7'	
Drilling Measured From		DF	
		GL	
Date	10/06/2016		
Run Number			
Depth Driller	2727'		
Depth Logger	567'	Thick Oil	
Bottom Logged Interval			
Top Log Interval			
Open Hole Size			
Type Fluid	Oil		
Density / Viscosity			
Max Recorded Temp.			
Estimated Cement Top			
Time Well Ready			
Time Logger on Bottom			
Equipment Number			
Location	D Mashburn		
Recorded By			
Witnessed By	NA		
Run Number	Bit	From	To
	Size	Weight	From
			To
	Size	Wgt/Ft	Top
			Bottom
Casing Record			
Surface String			
Prod. String			
Production String			
Liner			

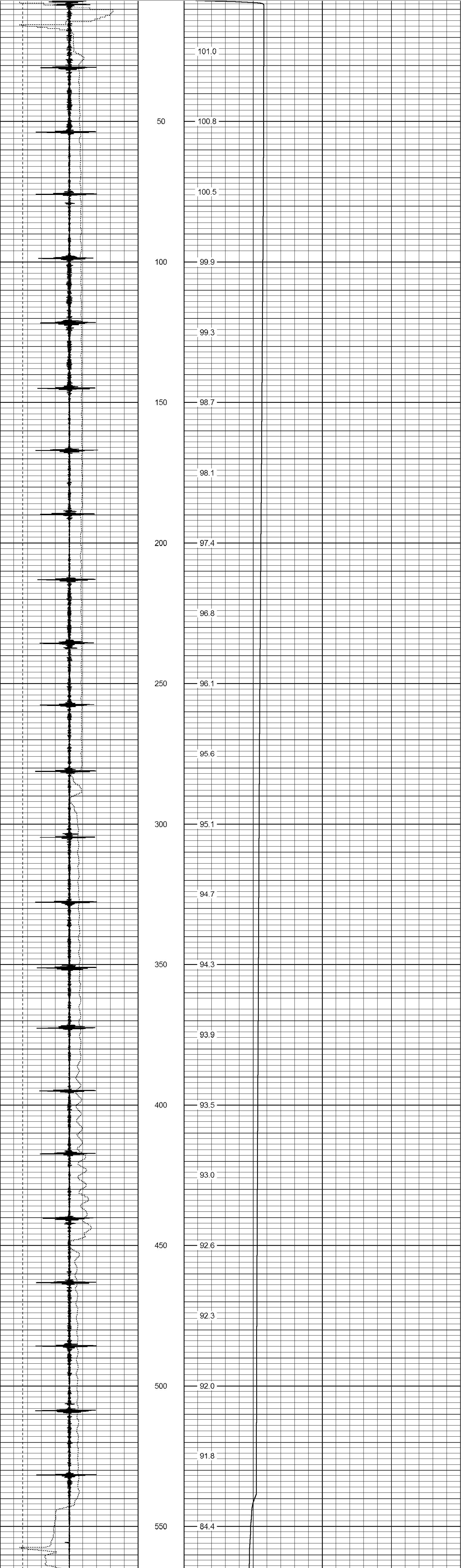
<<< Fold Here >>>

All interpretations are opinions based on inferences from electrical or other measurements and we cannot and do not guarantee the accuracy or correctness of any interpretation, and we shall not, except in the case of gross or willful negligence on our part, be liable or responsible for any loss, costs, damages, or expenses incurred or sustained by anyone resulting from any interpretation made by any of our officers, agents or employees. These interpretations are also subject to our general terms and conditions set out in our current Price Schedule.

Comments

Database File: e:\moc waxwell a #3.db
 Dataset Pathname: 10-6-16
 Presentation Format: temp
 Dataset Creation: Fri Oct 07 12:44:43 2016 by Log 7.0 B1
 Charted by: Depth in Feet scaled 1:240

10	CCL	-10	0	TEMP (degF)	350
10	LSPD (ft/min)	-60	TEMP		
100	LTEN (lb)	-500	(degF)		



10	CCL	-10	0	TEMP (degF)	350
10	LSPD (ft/min)	-60	TEMP		
100	LTEN (lb)	-500	(degF)		