

29-18473

SCHLUMBERGER

WELL SURVEYING CORPORATION

COMPANY: ARTHUR McADAMS
 TRICO OIL AND GAS COMPANY Y
 WELL: COFFEE #8
 ELEVATION: 808
 FIELD: ROUND MOUNTAIN
 COUNTY: KERN (Sec. 8-28-29)
 STATE: CALIFORNIA

COMPANY: TRICO OIL AND GAS COMPANY
 FIELD: ROUND MOUNTAIN
 WELL: COFFEE #8
 COUNTY: KERN (8-28-29)
 FLING NO.:

DIAMETER OF HOLE

11-3/4" - 1115'
 5 5/8" from 1460 to 1358'

RUN	1	2	3	4	5	6
Date	5-21-41	5-27-41				
Csg. shoe						
Total D.	1115	1358				
Ft. meas.	1085	102				
Mud: Nat.	Natural	Nat.				
Dens.	70	68				
Visc.						
Res.	2.0@72°F	1.077				
Max. pull						
Depth measurements taken from:	Derrick Floor					

REMARKS

First run - Maximum temperature 90° F - Standard Device

OBSERVERS: J. H. Hodgson

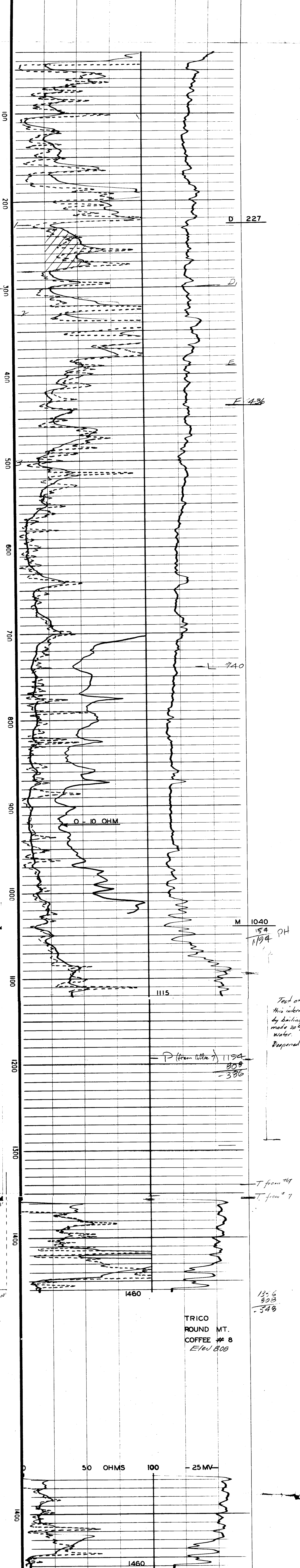
RESISTIVITY

SELF-POTENTIAL

NORMAL CURVE THIRD CURVE

0 -ohms m²m 40

← 100 millivolts →



TRICO
 ROUND MT.
 COFFEE # 8
 Elev 808

50 OHMS 100 - 25 MV

Test of this interval by bailing made 20% water. Reopened

13.6
 923
 = 548

T from 769
 T from 7

P (from collar) 1194
 808
 - 386

M 1040
 154
 1194 PH

100
200
300
400
500
600
700
800
900
1000
1100
1200
1300
1400
1460