

0 29-35112

533N-1
 NORTH BELFRIDGE
 LOCATION: 16887 SOUTH 8 1/2 WEST FROM THE
 SECTION: 1
 PERMANENT DATUM: DGL
 ELEVATIONS: 620.0 F
 ELEV. OF PERM. DATUM: 620.0 F
 ELEV. OF SURFACE: 625.0 F
 ELEV. OF BENCH MARK: 620.0 F
 DRILL MEASURED FROM: BENCH MARK
 DATE: 14 MAY 86
 HPI SERIAL NO: 028-35112
 DEPTH-DRILLER: 8453.0 F
 DEPTH-LOGGERS: 8453.0 F
 TOP LOG INTERVAL: 8012.0 F
 CASING-DRILLER: 8012.0 F
 CASING-LOGGERS: 8012.0 F
 CASING-RODERS: 8012.0 F
 BIT HEIGHT: 4,000.0 B/F
 BIT LENGTH: 8453.0 F

TYPE FLUID IN HOLE: POLYCAPS / KCL
 DENSITY: 8.50 LB/G
 VISCOSITY: 42.0 S
 PH: 10.5
 FLUID LOSS: 1.7 CC
 SOURCE OF SAMPLE: PIT
 RM: .285 DHMM AT 72.0 DEGF
 RMF: .317 DHMM AT 68.0 DEGF
 RMC: .294 DHMM AT 68.0 DEGF
 SOURCE RMF/RMC: MEAS/MEAS
 RM AT BHT: .104 DHMM AT 210. DEGF
 RMF AT BHT: .110 DHMM AT 210. DEGF
 RMC AT BHT: .102 DHMM AT 210. DEGF
 TIME CIRC. STOPPED: 16:00 5/14
 TIME LOGGER ON BTH: 22:15 5/14
 MAX. REC. TEMP: 210.0 DEGF
 LOGGING UNIT NO: 8216
 LOGGING UNIT LOC: DILDAL
 RECORDED BY: KNDHALES
 WITNESSED BY: MOUSTAKIS/REEM

REMARKS:

EQUIPMENT NUMBER:-

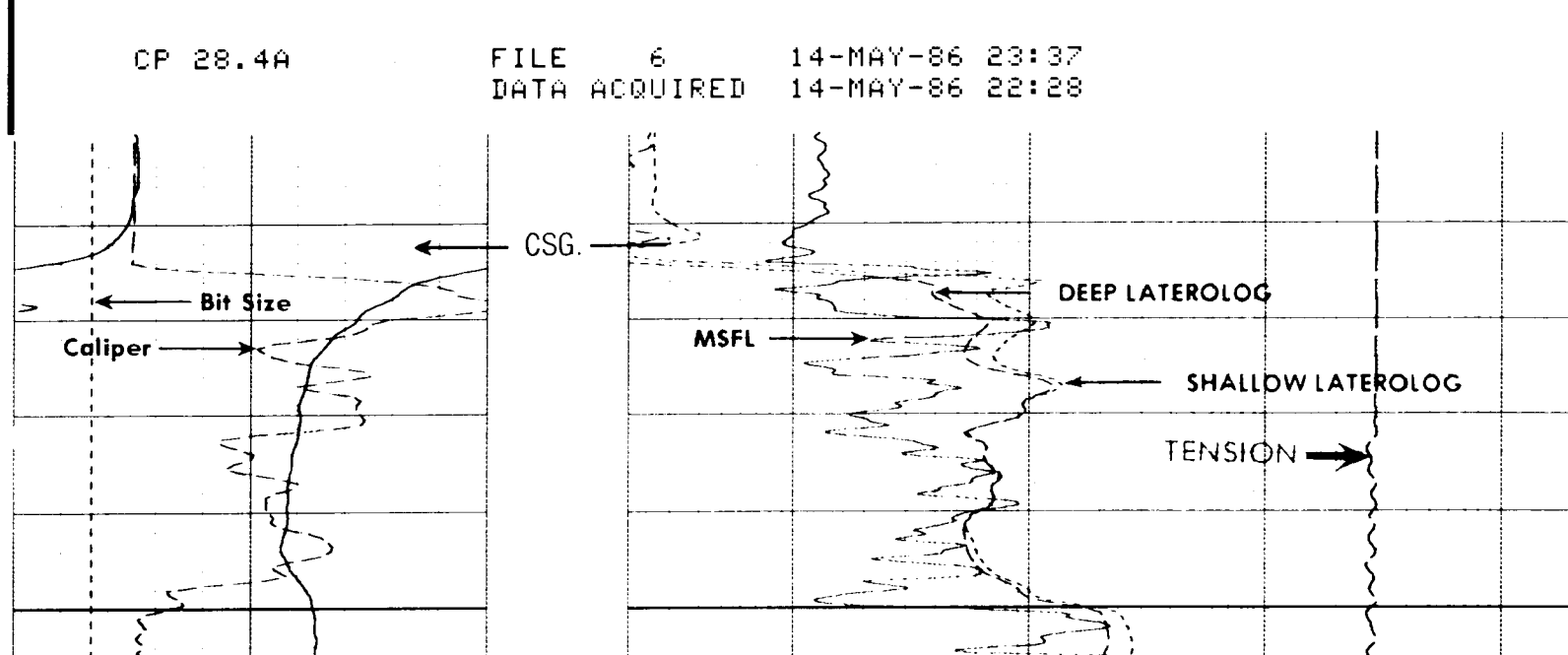
CPU 2883	HU 1749	DLN 924	MRM 893
SRE 1985	SRW 2755	DLC 714	DLS 752

ALL INTERPRETATIONS ARE OPINIONS BASED ON INFERENCE FROM ELECTRICAL OR OTHER MEASUREMENTS AND WE CANNOT, AND DO NOT GUARANTEE THE ACCURACY OR CORRECTNESS OF ANY INTERPRETATIONS, AND WE SHALL NOT, EXCEPT IN THE CASE OF GROSS OR WILLFUL NEGLIGENCE ON OUR PART, BE LIABLE OR RESPONSIBLE FOR ANY LOSS, COSTS, DAMAGES OR EXPENSES INCURRED OR SUSTAINED BY ANYONE RESULTING FROM ANY INTERPRETATION MADE BY ANY OF OUR OFFICERS, AGENTS OR EMPLOYEES. THESE INTERPRETATIONS ARE ALSO SUBJECT TO OUR GENERAL TERMS AND CONDITIONS AS SET OUT IN OUR CURRENT PRICE SCHEDULE.

CP 28.4A FILE 6 14-MAY-86 23:45
DATA ACQUIRED 14-MAY-86 22:28

BS (IN)	16.000	LLD (DHMM)	80.000
CALI (IN)	16.000	LLS (DHMM)	80.000
SP (MV)	0.0	LLC (DHMM)	16.000 1000.0
			CLLD (MHMD) 0.0

CP 28.4A FILE 6 14-MAY-86 23:41
DATA ACQUIRED 14-MAY-86 22:12



BS (IN)	16.000	LLD (DHMM)	80.000
CALI (IN)	16.000	LLS (DHMM)	80.000
SP (MV)	0.0	LLC (DHMM)	16.000 1000.0
			CLLD (MHMD) 0.0

SENSOR MEASURE POINT TO TOOL ZERO

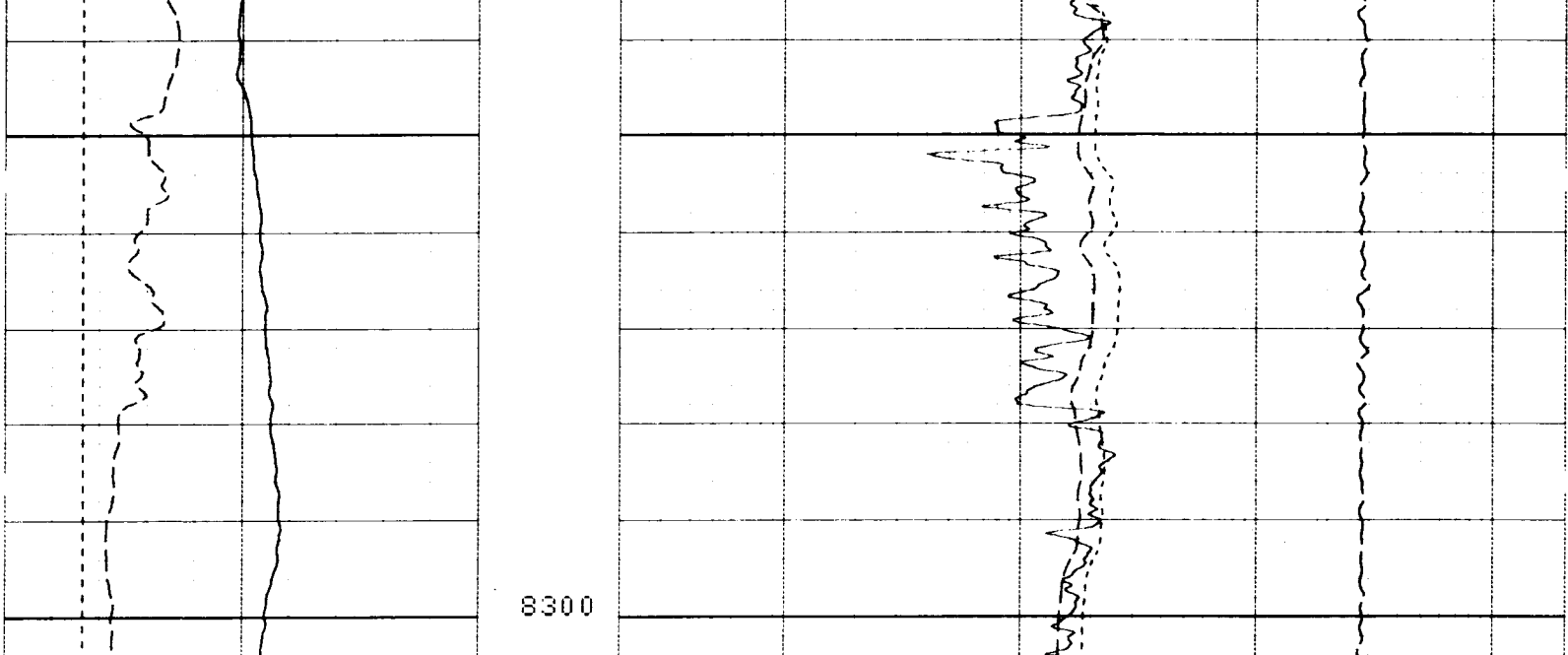
SI90	13.9	FEET	CALI	32.1	FEET
SV90	13.9	FEET	SI0	13.9	FEET
DI90	13.9	FEET	SV0	13.9	FEET
DV90	13.9	FEET	D10	13.9	FEET
SP	58.2	FEET	DV0	13.9	FEET
TENS	13.9	FEET	SPAR	58.2	FEET
LLS	13.9	FEET	LLD	13.9	FEET
CMSF	31.7	FEET	I1	32.0	FEET

PARAMETERS

NAME	VALUE	UNIT	NAME	VALUE	UNIT
FPHI	SPHI		SPT	STAN	
BS	7.62500	IN	BHS	OPEN	
PP	NDRM		DD	0.0	F

TAPE NOT MADE

BS (IN)	16.000	LLD (DHMM)	200000	TENS (LB)	0.0
CALI (IN)	16.000	LLS (DHMM)	200000	MSFL (DHMM)	2000.0
SP (MV)	0.0	LLC (DHMM)	200000	LLD (DHMM)	2000.0
				LLD (DHMM)	2000.0



BS (IN)	16.000	LLD (DHMM)	200000	TENS (LB)	0.0
CALI (IN)	16.000	LLS (DHMM)	200000	MSFL (DHMM)	2000.0
SP (MV)	0.0	LLC (DHMM)	200000	LLD (DHMM)	2000.0
				LLD (DHMM)	2000.0

SENSOR MEASURE POINT TO TOOL ZERO

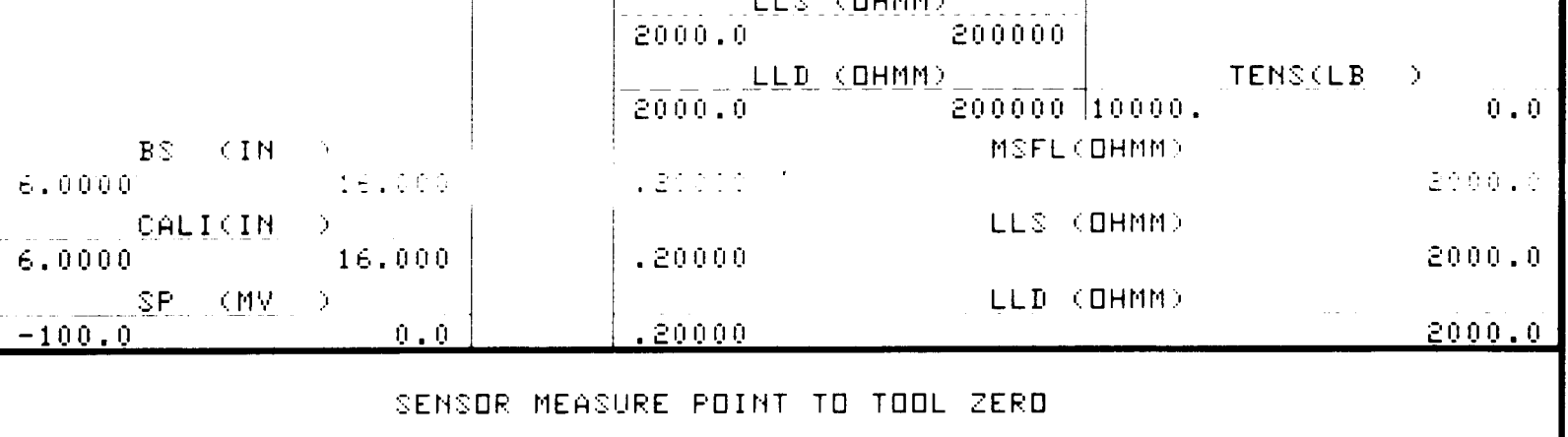
SI90	13.9	FEET	CALI	32.1	FEET
SV90	13.9	FEET	SI0	13.9	FEET
DI90	13.9	FEET	SV0	13.9	FEET
DV90	13.9	FEET	D10	13.9	FEET
SP	58.2	FEET	DV0	13.9	FEET
TENS	13.9	FEET	SPAR	58.2	FEET
LLS	13.9	FEET	LLD	13.9	FEET
CMSF	31.7	FEET	I1	32.0	FEET

PARAMETERS

NAME	VALUE	UNIT	NAME	VALUE	UNIT
FPHI	SPHI		SPT	STAN	
BS	7.62500	IN	BHS	OPEN	
PP	NDRM		DD	0.0	F

TAPE NOT MADE

BS (IN)	16.000	LLD (DHMM)	200000	TENS (LB)	0.0
CALI (IN)	16.000	LLS (DHMM)	200000	MSFL (DHMM)	2000.0
SP (MV)	0.0	LLC (DHMM)	200000	LLD (DHMM)	2000.0
				LLD (DHMM)	2000.0



BS (IN)	16.000	LLD (DHMM)	200000	TENS (LB)	0.0
CALI (IN)	16.000	LLS (DHMM)	200000	MSFL (DHMM)	2000.0
SP (MV)	0.0	LLC (DHMM)	200000	LLD (DHMM)	2000.0
				LLD (DHMM)	2000.0

SENSOR MEASURE POINT TO TOOL ZERO

SI90	13.9	FEET	CALI	32.1	FEET
SV90	13.9	FEET	SI0	13.9	FEET
DI90	13.9	FEET	SV0	13.9	FEET
DV90	13.9	FEET	D10	13.9	FEET
SP	58.2	FEET	DV0	13.9	FEET
TENS	13.9	FEET	SPAR	58.2	FEET
LLS	13.9	FEET	LLD	13.9	FEET
CMSF	31.7	FEET	I1	32.0	FEET

PARAMETERS

NAME	VALUE	UNIT	NAME	VALUE	UNIT
FPHI	SPHI		SPT	STAN	
BS	7.62500	IN	BHS	OPEN	
PP	NDRM		DD	0.0	F

TAPE NOT MADE

BEFORE SURVEY CALIBRATION SUMMARY

PERFORMED: 14-MAY-86 23:31
PROGRAM FILE: MISH (VERSION 28.4A 86/01/11)

DLTB ELECTRONICS CALIBRATION SUMMARY

MEASURED	CALIBRATED	UNITS
LLS	31.6094	DHMM
LLD	31.6094	DHMM

SRTB ELECTRONICS CALIBRATION SUMMARY

MEASURED	PLUS	ZERO	PLUS	UNITS
CMSF	3.7	999.5	0.0	1000.0
I1	-2.2	200.0	0.0	2000.0

SRTB CALIPER CALIBRATION SUMMARY

MEASURED	SMALL	LARGE	CALIBRATED	SMALL	LARGE	UNITS
CALI	6.02	13.9	6.00	16.0		IN

CP 28.4A FILE 9 14-MAY-86 23:31

AFTER SURVEY TOOL CHECK SUMMARY

PERFORMED: 14-MAY-86 23:46
PROGRAM FILE: MISH (VERSION 28.4A 86/01/11)

DLTB TOOL CHECK

BEFORE	PLUS	AFTER	UNITS
LLS	31.61	31.5837	DHMM
LLD	31.61	31.5837	DHMM

SRTB TOOL CHECK

BEFORE	AFTER	BEFORE	PLUS	UNITS
CMSF	3.7	1000.0	994.0	1000.0
I1	-2.2	200.0	200.0	2000.0

CP 28.4A FILE 9 14-MAY-86 23:31