

76.35  
730  
L/S/5/94

**INTECO**  
Company: Macpherson Oil Co.  
Well: Caldwell H4A  
Field: Round Mountain  
County: Kern  
State: California  
Country: United States

**MEMORY LOG**  
Company: Macpherson Oil Co.  
Well: Caldwell H4A  
Field: Round Mountain  
County: Kern  
State: California  
Country: United States

**LOG RECORD**  
Log Measured From: 990 ft  
Depth: 6000 ft  
MWD End: 6000 ft  
MWD Start: 990 ft

**CASING RECORD**  
Casing Size: 16 in  
Casing Depth: 7625 ft  
Casing Material: 10.75 in  
Casing Weight: 9.90 lb/ft

**TRUE VERTICAL DEPTH**  
Company Representative: RICH HULGAN  
Field Engineer: KURT THOMPSON  
Job #: 4234294

Table with 5 columns (Run Number 1-5) and rows for Run Data, Sensor Offsets, and Calibration Verification. Includes parameters like Bit Diameter, Measured Depth, Pressure, Density, and Temperature.

Table with 5 columns (Run Number 1-5) and rows for Equipment Data and Sensor Offsets. Includes parameters like Modulator Assembly Number, Drill Collar S/N, Pressure Sub S/N, and Gamma Sub S/N.

Table with 5 columns (Run Number 1-5) and rows for Calibration Verification. Includes parameters like Post Run, Pre Run, Date, Time (hrs), Resistivity Sub S/N, and Phase Difference Delta.

Table with 5 columns (Run Number 1-5) and rows for Environmental Parameters. Includes Date & Time, Run No., Bit Depth, Rm @ BHCT, Mud Weight, %K, and Rm @ B-T.

MNEMONICS section listing abbreviations: ROPA (Rate of Penetration), GRAM (Gamma Ray APPARENT), RACHM (Resistivity (LS) 2MHz Compensated Borehole Corrected), etc.

COMMENTS section with 3 numbered items describing the use of OnTrak tools and sensor offsets.

REMARKS section with 2 numbered items regarding intervals not logged due to sensor offset.

Disclaimer text: Baker Hughes INTECO does not guarantee the accuracy or correctness of interpretations provided in or from this log.

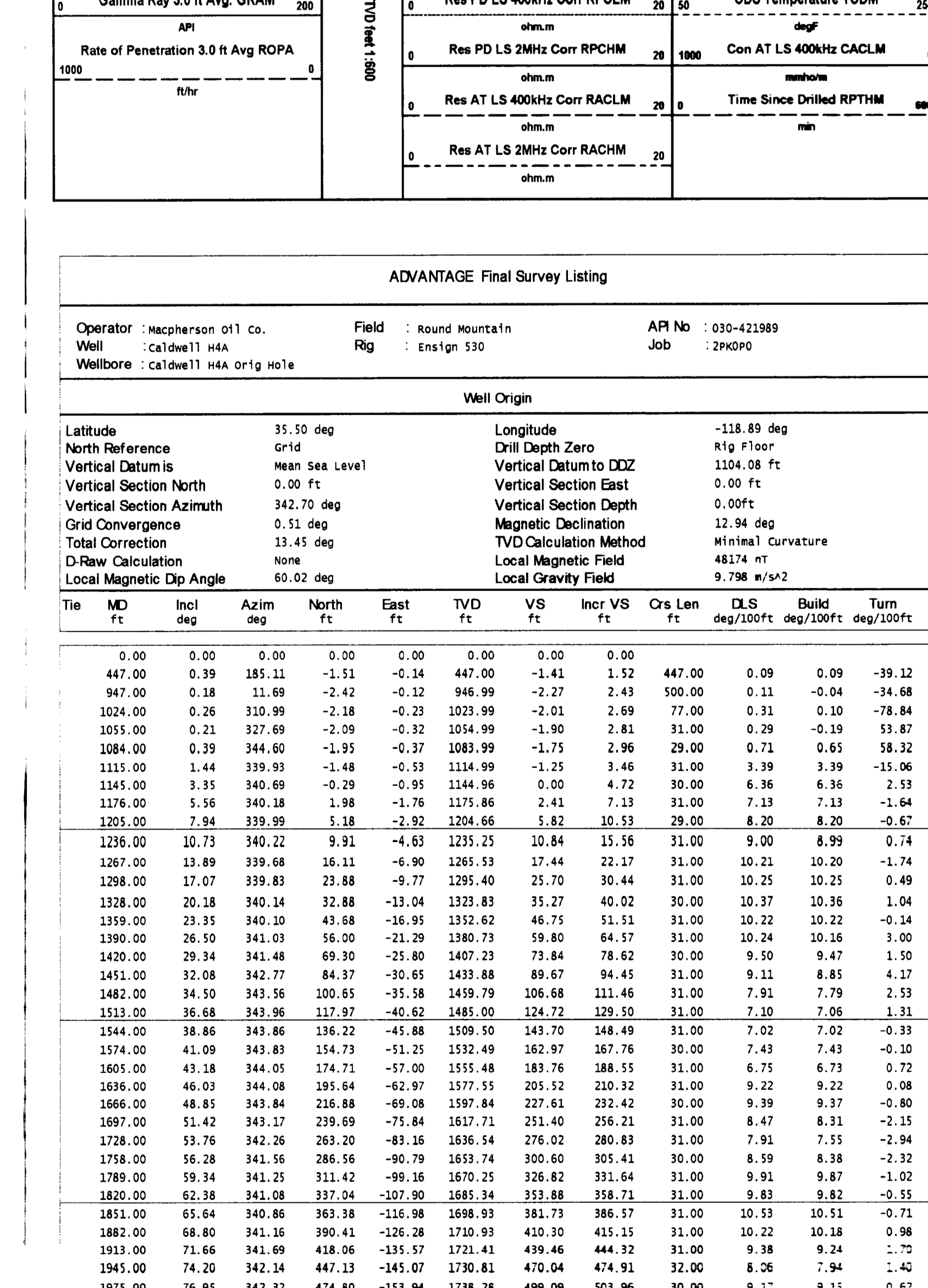


Table with 5 columns (Run Number 1-5) and rows for Environmental Parameters. Includes Date & Time, Run No., Bit Depth, Rm @ BHCT, Mud Weight, %K, and Rm @ B-T.

Table with 5 columns (Run Number 1-5) and rows for Environmental Parameters. Includes Date & Time, Run No., Bit Depth, Rm @ BHCT, Mud Weight, %K, and Rm @ B-T.

Table with 5 columns (Run Number 1-5) and rows for Environmental Parameters. Includes Date & Time, Run No., Bit Depth, Rm @ BHCT, Mud Weight, %K, and Rm @ B-T.

Table with 5 columns (Run Number 1-5) and rows for Environmental Parameters. Includes Date & Time, Run No., Bit Depth, Rm @ BHCT, Mud Weight, %K, and Rm @ B-T.