

INDUCTION / GAMMA LOG

2-100

COMPANY **MOBIL OIL CORPORATION**
 WELL No. **M - 267 - E R/D**
 FIELD **WILMINGTON**
 County **L.A.** State **CALIF.**
 No. **M - 267 - E R/D** AUG 19 1970
 (037-03411)
 COMPANY **MOBIL OIL CORPORATION**
 REEVE
 COUNTY **LOS ANGELES STATE**
 Location **N/A**
 Other Services: **NONE**

Permanent Datum **MAT** Elev. **N/A**
 Log Measured From **KB QR 10** Fr. Above Perm. Datum
 Drilling Measured From **K13** Elev. **N/A**
 D.F. **N/A**
 G.L. **N/A**

Date	2-23-69
Run No.	ONE
Depth-Driller	3102'
Depth-Welex	3104'
Btm. Log Inter.	3099'
Top Log Inter.	2609'
Casing-Driller	85/8@ 2610
Casing-Welex	2609'
Bit Size	7 5/8"
Type Fluid in Hole	INVERTED EMULSION
Dens. Visc.	68 65
pH Fluid Loss	N/A N/A ml
Source of Sample	N/A @ °F
R _{mf} @ Meas. Temp.	N/A @ °F
R _{mc} @ Meas. Temp.	N/A @ °F
R _{mt} @ Meas. Temp.	N/A @ °F
R _{mt} @ Meas. Temp.	N/A @ °F
Source R _{mt} R _{mc}	N/A @ 144°F
R _{mt} @ BHT	N/A @ 144°F
R _{mc} @ BHT	N/A @ 144°F
R _{mt} BHT	N/A @ 144°F
R _{mc} BHT	N/A @ 144°F
Time Since Circ.	3 HOURS
Max. Rec. Temp.	144°F @ BHT
Equip. Location	76971 LH
Recorded By	R. ANDERSON
Witnessed By	MR. KING

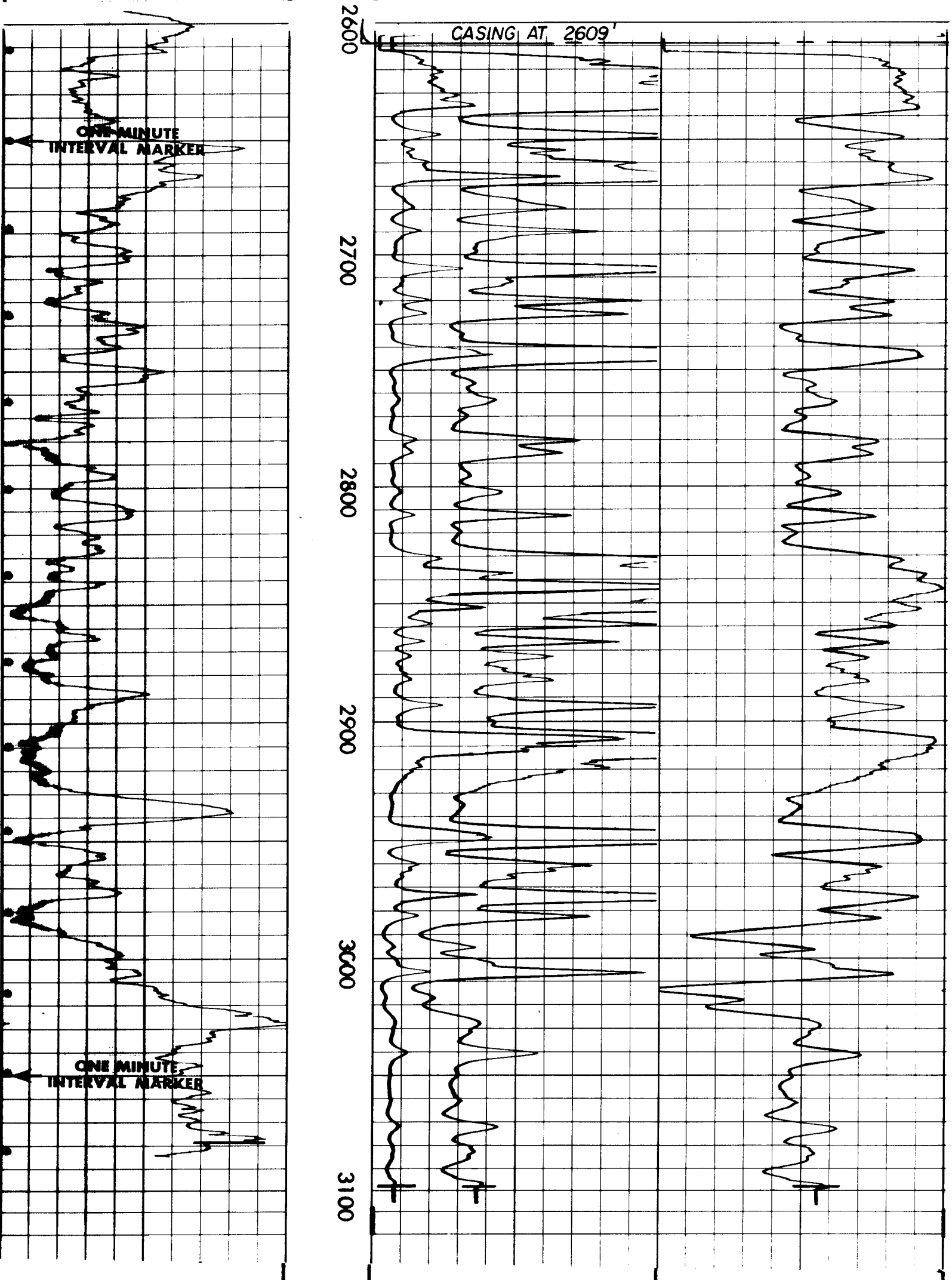
Service Ticket No.		Remarks:	
Change in Mud Type or Additional Samples		SCALE CHANGES	
Date	Sample No.	Type Log	Depth
Depth-Driller			
Type Fluid in Hole			
Dens.	Visc.		
ph	Fluid Loss		
Source of Sample			
R _{mf} @ Meas. Temp.	@ °F	Run No.	Tool Type and No.
R _{mc} @ Meas. Temp.	@ °F	ONE	IND G/R
R _{mt} @ Meas. Temp.	@ °F		12804
Source: R _{mf} R _{mc}		Pad Type	Tool Position
R _{mf} @ BHT	N/A @ 144°F		FREE
R _{mc} @ BHT	N/A @ 144°F		GAMMA
R _{mt} BHT	N/A @ 144°F		
R _{mc} BHT	N/A @ 144°F		

NOTE: LOG TOUCHED UP IN PLACES BECAUSE OF LIGHT TRACES.

2" - 100'

GAMMA	
10	110
API Gamma Ray Units	

RESISTIVITY OHMS M²/M		CONDUCTIVITY M MHOS/M	
0	INDUCTION 30	1000	INDUCTION 0
0	O.S. 300	2000	O.S. 1000



GAMMA	
10	110
API Gamma Ray Units	

RESISTIVITY OHMS M²/M		CONDUCTIVITY M MHOS/M	
0	INDUCTION 30	1000	Induction 0
0	O.S. 300	2000	O.S. 1000

MOBIL OIL CORPORATION
 No. M - 267 - E R/D
 WILMINGTON
 LOS ANGELES, CALIFORNIA

T.D. LOGGED 3099'
 T.D. DRILLER 3102'
 T.D. WELEX 3104'