

D. G. [unclear]
APR 28 1939

21 643

SCHLUMBERGER

WELL SURVEYING CORPORATION

COMPANY: **SOCONY MOBIL OIL CO., INC.**
GENERAL PETROLEUM CORPORATION

WELL: **Harbor Community #48**

RUN NO: **Second**

ELEVATION:

FIELD: **Wilmington Harbor**

COUNTY: **Los Angeles**

STATE: **California**

Casing shoe depth:	{	Driller	2585 ft.	Started run	12:30 p.m.
		Schlumberger		Finished run	1:45 p.m.
Bottom Depth:		Driller	2980 ft.	Time well occupied by outfit	1 1/2 h.
Max. depth reached by lower elect			2965 ft.	Time waiting at well	---- h.
Footage measured			369 ft.	Mileage incurred by run	10 M.
Footage missed			0.3 ft.	Total time incurred by run	1:45 h.

DIAMETER OF HOLE

from..... to **2965'** **7-5/8"**

from..... to.....

from..... to.....

Bottom Temperature **110** °F

MUD CHARACTERISTICS

Nature: **Natural**

Weight: **68**

Viscosity: 500 cc Marsh Funnel **16**

Resistivity: **3.2** @..... °F

REMARKS

Device: **Long**

Depth measurements taken from: **Derrick Floor**

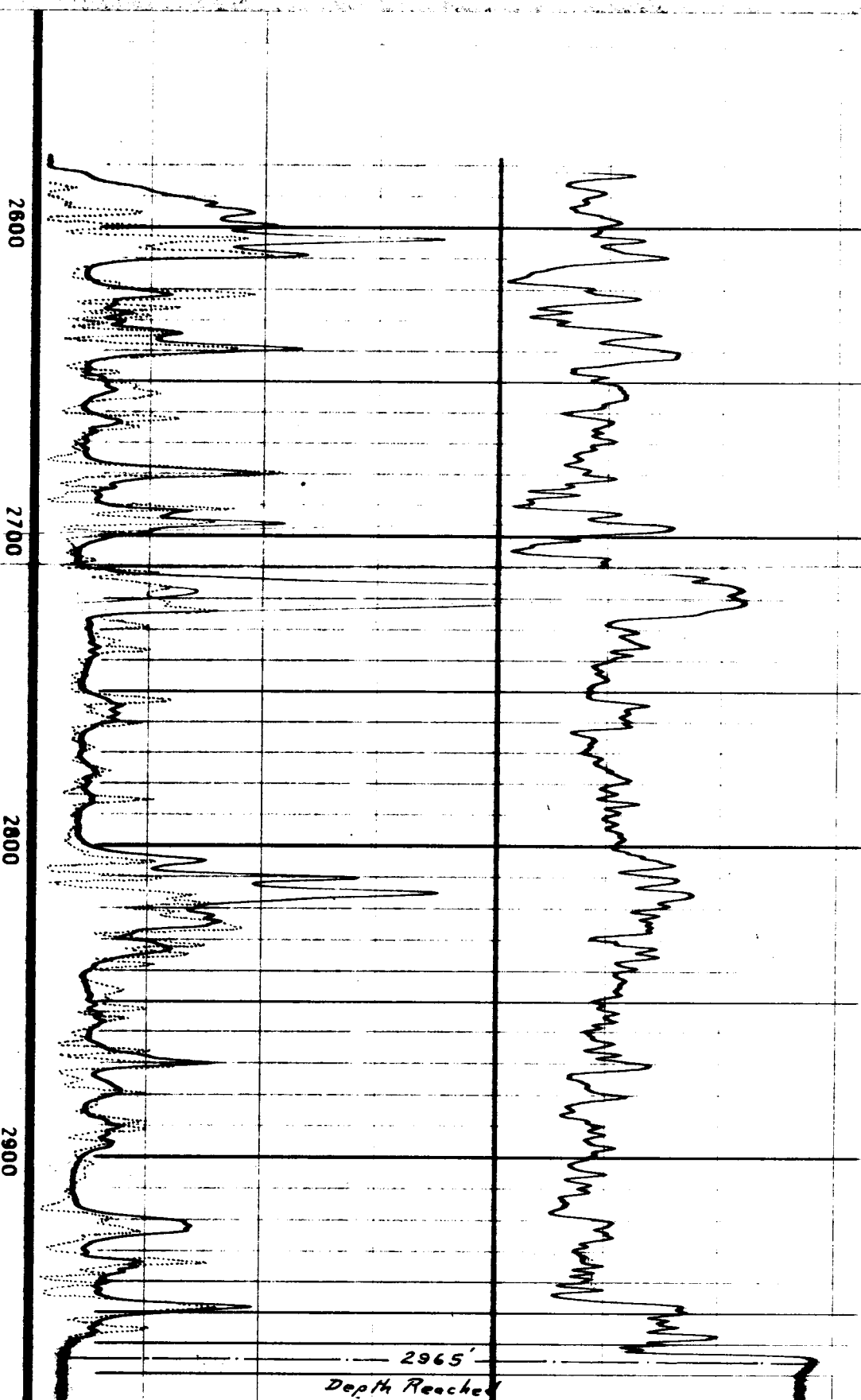
Maximum Pull **1400** lbs. at **2965** ft.

Witnessed By:

DATE **April 26, 1939**

OBSERVERS **A. E. HERRALD**

DEPTH	RESISTIVITY	SELF-POTENTIAL
	NORMAL CURVE THIRD CURVE	
0 -ohms m ² m..... 30	← 100 millivolts →



21 643