

D.O.G.

21 643

# SCHLUMBERGER

WELL SURVEYING CORPORATION

SOCONY MOBIL OIL CO., INC.

COMPANY: GENERAL PETROLEUM CORPORATION

WELL: Harbor Community #48

RUN NO: First

ELEVATION:

FIELD: Wilmington Harbor

COUNTY: Los Angeles

STATE: California

Casing shoe depth:	Driller	70	ft.	Started run	11:15	P.M.
	Schlumberger			ft.	Finished run	12:30
Bottom Depth:	Driller	2600	ft.	Time well occupied by outfit:	1 1/2	h.
Max. depth reached by lower elect		2596	ft.	Time waiting at well		h.
Footage measured		1100	ft.	Mileage incurred by run	10	M.
Footage missed		1	ft.	Total time incurred by run	2	h.

### DIAMETER OF HOLE

from to 2596' 12 1/4"

from to

from to

Bottom Temperature °F

### MUD CHARACTERISTICS

Nature: Natural

Weight: 77

Viscosity: 500 cc Marsh Funnel 24

Resistivity: 6.6 @ °F

### REMARKS

Device: Long

Depth measurements taken from:

Maximum Pull 1500 lbs. at 2596 ft.

Witnessed By: Mr. Quinn

DATE April 20, 1939 OBSERVERS A. E. HERRALD

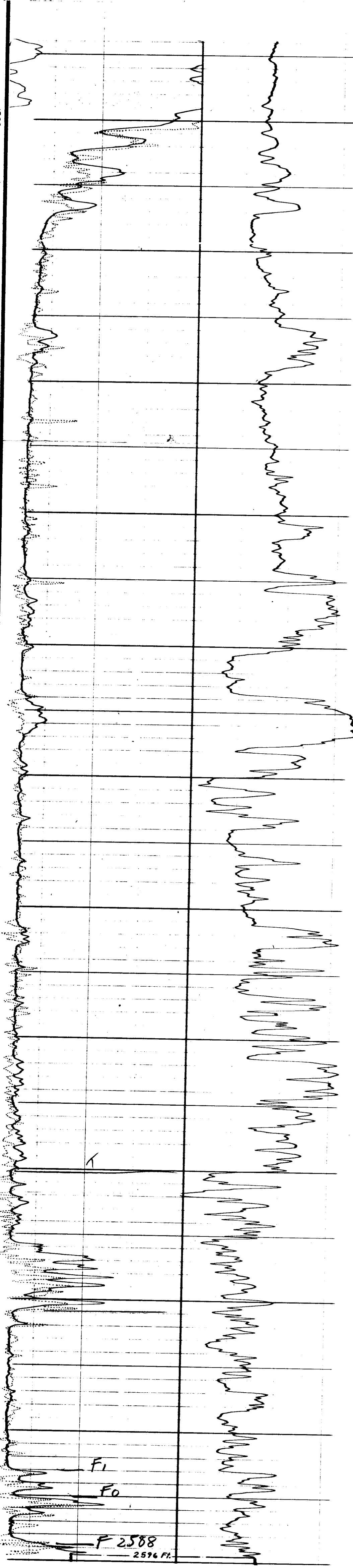
### RESISTIVITY

NORMAL CURVE THIRD CURVE

0 -ohms m<sup>2</sup>m. 30

### SELF-POTENTIAL

150 millivolts



21 643

TIDELANDS OIL