

**WELL ANALYSIS CORPORATION**

**WATER INJECTION SURVEY**

FILING NO.

COMPANY: CHEVRON U.S.A. INC.  
 WELL: ROSENBERG (NCT-1) WI-29  
 FIELD: SAN ARDO  
 COUNTY: MONTEREY  
 STATE: CALIFORNIA

CHEVRON NUMBER: N/A

OTHER SVC:

API NUMBER: 0405320270000  
 SEC: 28  
 TWN: 22S  
 RNG: 10E

PERMANENT DATUM: GROUND LEVEL  
 ELEV: -ELEVATIONS-

LOG MEASURED FROM DF 12' ABOVE PERM DATUM

DRILLING MEASURED FROM

KB: Ft.  
 DF: Ft.  
 GL: Ft.

DATE LOG RAN 12-10-2014

RUN NUMBER ONE

EFFECTIVE DEPTH 2881'

PICKUP DEPTH 2695'

BOT LOGGED INT 2695'

TOP LOGGED INT 200'

TYPE OF INJECT WATER

FLUID IN WELL WATER

FLUID LEVEL SURFACE

WELL STATUS INJECTION

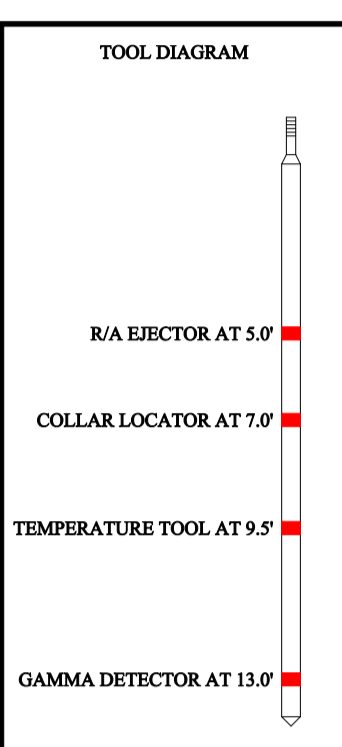
MAX TEMPERATURE 156.6 F

AT DEPTH 2375.5'

LOGGING SPEED VARIOUS

RECORDED BY M.ABDILLA  
 WITNESSED BY N/A  
 ENGINEER J. SLINKARD

DEPTH CORRELATION LINER TOP



DATE LOG RAN	12-10-2014	PRESSURE	FLOWING	INJECTION	SHUT-IN
RUN NUMBER	ONE	TUBING PSI		600	
EFFECTIVE DEPTH	2881'	CASING PSI			
PICKUP DEPTH	2695'	INJECTION RATE		2300 B/D	
BOT LOGGED INT	2695'	OBSERVED RATE		2298 B/D	
TOP LOGGED INT	200'	R/A SOURCE		1-131 W	
TYPE OF INJECT	WATER	ACTIVITY		0.5 MCI	
FLUID IN WELL	WATER	HALF LIFE		8.08 DAYS	
FLUID LEVEL	SURFACE	PRODUCTION DATA			
WELL STATUS	INJECTION	OIL =			
MAX TEMPERATURE	156.6 F	GAS =			
AT DEPTH	2375.5'	BHP =			
LOGGING SPEED	VARIOUS	WATER =			
RECORDED BY	M.ABDILLA				
WITNESSED BY	N/A				
ENGINEER	J. SLINKARD				
DEPTH CORRELATION	LINER TOP				

Equipment Data

R/A Ejector	1.0"
COLLAR LOCATOR	1.0"
TEMPERATURE TOOL	1.0"
GAMMA DETECTOR	1.0"

Remarks/Survey Results

SURVEY INDICATES VALID CASING INTEGRITY AND NO MIGRATION AROUND THE TOP PERFORATION.

6:00 AM ON LOCATION  
 9:30 AM OFF LOCATION

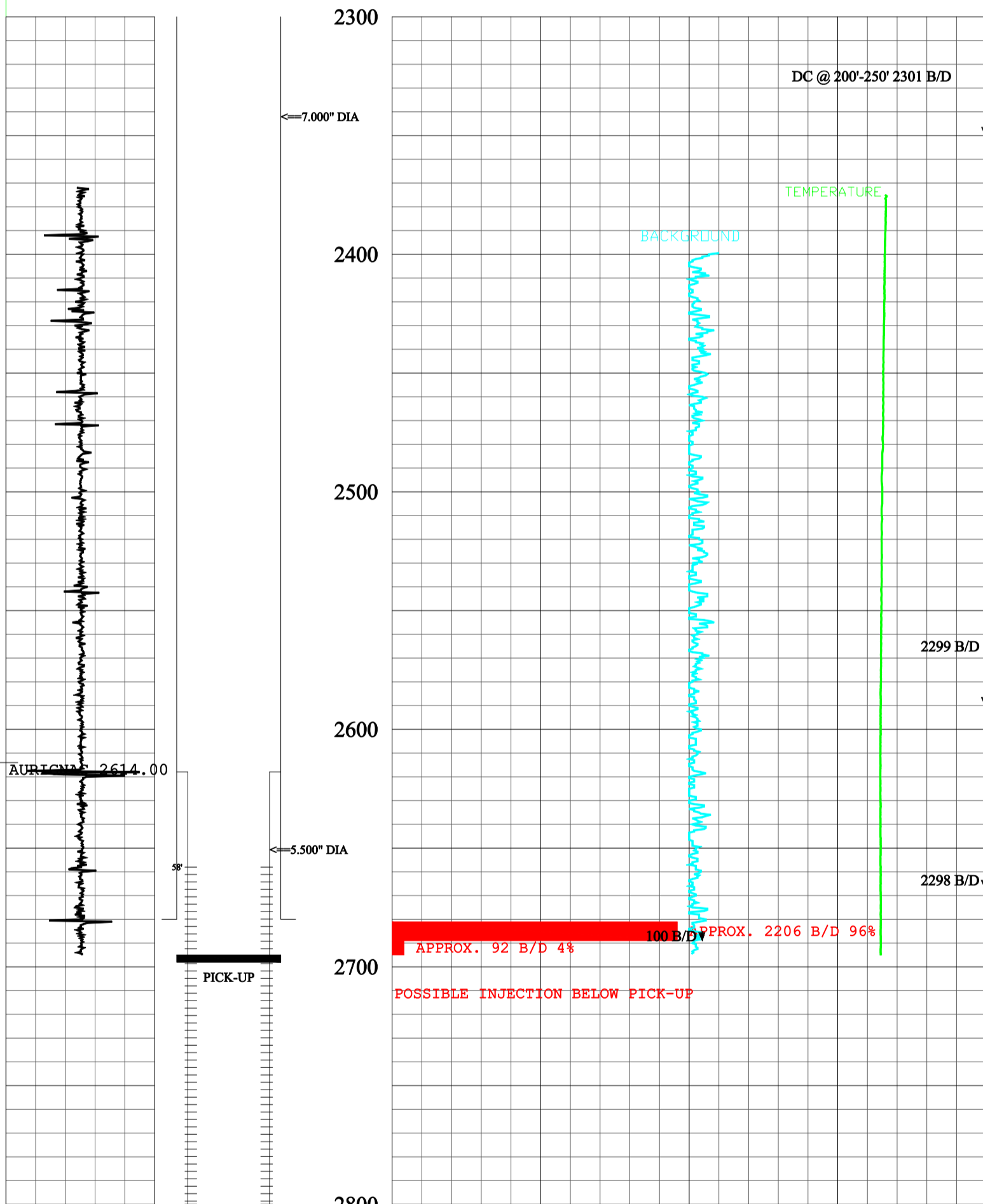
SAND TAG MARKERS: 2614.00' AURIGNAC

PROFILE DATED: 12-10-2014 PREVIOUS PROFILE: UNAVAILABLE

2681'-2689' APPROX. 2206 B/D 96%  
 2689'-2695' APPROX. 92 B/D 4%  
 POSSIBLE INJECTION BELOW PICK-UP

SIZE	WT(#)	FROM	TO	SIZE	WT(#)	FROM	TO
7.000"	23	SURFACE	2680'				
5.500"	17	2618'	2881'				

STR.	PIPE DIA.	PERFORATIONS
A	5.500"	2658'-2878'.



**TOP PERF CHECK**  
 SLUG OUT AND BY AT 2590', WAITED 50 SEC. THEN LOGGED DOWN...

