

Remarks

TRIO PETROLRUM LLC PRODUCTION AFE#

SCIENTIFIC DRILLING INTERNATIONAL JOB#

ALL REFERENCES IN THE DEPTH TRACK ARE AT BIT DEPTH.

ALL DATA IS MEMORY DATA UNLESS STATED OTHERWISE.

FLAT AVERAGE FILTER OF 1.00 FT APPLIED TO GAIN - GAMMA RAY CURVE

FLAT AVERAGE FILTER OF 1.00 FT APPLIED TO RATE OF PENETRATION CURVE

FLAT AVERAGE FILTER OF 1.00 FT APPLIED TO PHASE SHIFT RESISTIVITY, 23" CURVE

FLAT AVERAGE FILTER OF 1.00 FT APPLIED TO ATTENUATION RESISTIVITY, 23" CURVE

FLAT AVERAGE FILTER OF 1.00 FT APPLIED TO PHASE SHIFT RESISTIVITY, 33" CURVE

FLAT AVERAGE FILTER OF 1.00 FT APPLIED TO ATTENUATION RESISTIVITY, 33" CURVE

FLAT AVERAGE FILTER OF 1.00 FT APPLIED TO FET OF RESISTIVITY CURVE

FLAT AVERAGE FILTER OF 1.00 FT APPLIED TO TOOL TEMPERATURE CURVE

FLAT AVERAGE FILTER OF 1.00 FT APPLIED TO PHASE SHIFT CONDUCTIVITY, 33" CURVE

RUN # :1 MWD / RESISTIVITY / GAMMA RAY / LOGGING RUN

SENSOR SN: MWD EYE=739 / RESISTIVITY=339 / GAMMA= 20

BIT TO SENSOR:MWD EYE= 65FT / RESISTIVITY= 38.22FT / GAMMA=34.07FT

RUN # :2 MWD / RESISTIVITY / GAMMA RAY / LOGGING RUN

SENSOR SN: MWD EYE=229 / RESISTIVITY=332 / GAMMA= 143

BIT TO SENSOR:MWD EYE= 62FT / RESISTIVITY= 35.95FT / GAMMA=31.75FT

REMARK #1 : OPEN HOLE SIDETRACK FROM 2635' TO 2640'

Remarks

MNEMONICS LIST:

G-GR = GAIN - GAMMA RAY

AR33 = ATTENUATION RESISTIVITY, 33"

ROP = RATE OF PENETRATION

FETR = FET OF RESISTIVITY

PR23 = PHASE SHIFT RESISTIVITY, 23"

T-TEMP = TOOL TEMPERATURE

AR23 = ATTENUATION RESISTIVITY, 23"

PC33 = PHASE SHIFT CONDUCTIVITY, 33"

PR33 = PHASE SHIFT RESISTIVITY, 33"

All interpretations are opinions based on inferences from electrical or other measurements and do not guarantee the accuracy or correctness of any interpretations, and we shall not, except in the case of gross or willful negligence on our part, be liable or responsible for any loss, costs, damages or expenses incurred or sustained by anyone resulting from any interpretation made by any of our officers, agents or employees. These interpretations are also subject to our general terms and conditions as set out in our current price schedule.

FINAL COPY

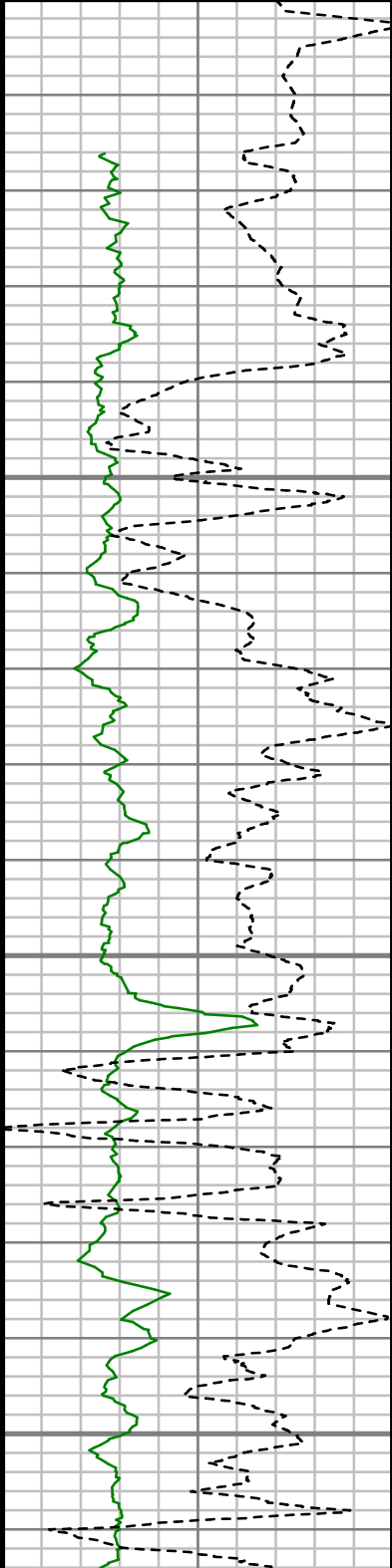
GAIN - Gamma Ray (G-GR)		
0	Unit = aapi	150
Rate of Penetration (ROP)		
500	Unit = ft/hr	0

MEASURED DEPTH
1:240 (ft)

Phase Shift Resistivity, 23" (PR23)		
0.2	Unit = ohmm	2000
Attenuation Resistivity, 23" (AR23)		
0.2	Unit = ohmm	2000
Phase Shift Resistivity, 33" (PR33)		
0.2	Unit = ohmm	2000
Attenuation Resistivity, 33" (AR33)		
0.2	Unit = ohmm	2000

FET of Resistivity (FETR)		
0	Unit = hr	10
Tool Temperature (T-TEMP)		
50	Unit = °F	150
Phase Shift Conductivity, 33" (PC33)		
1000	Unit = mmho/m	0

Comments

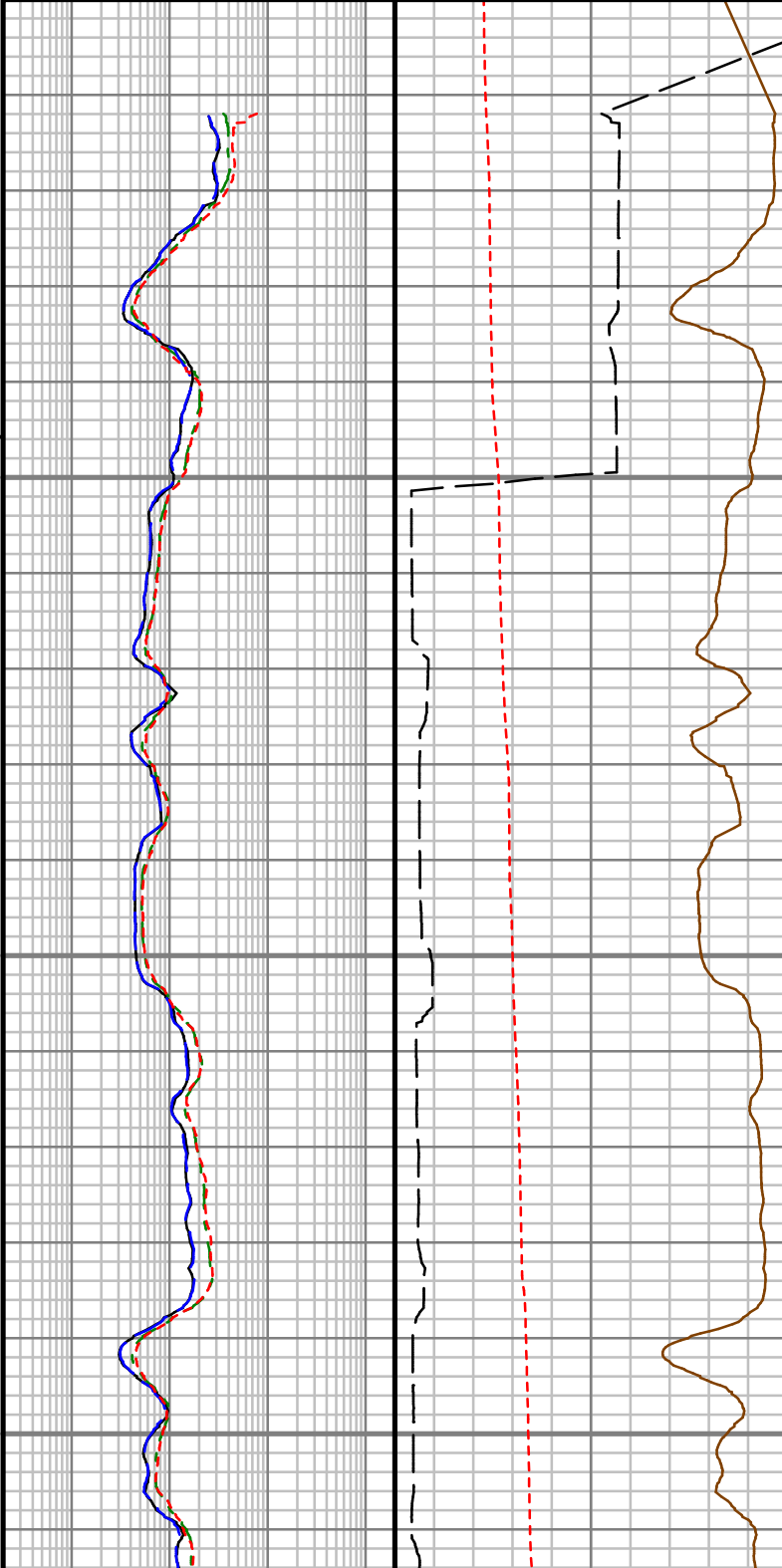


RUN #1 300'

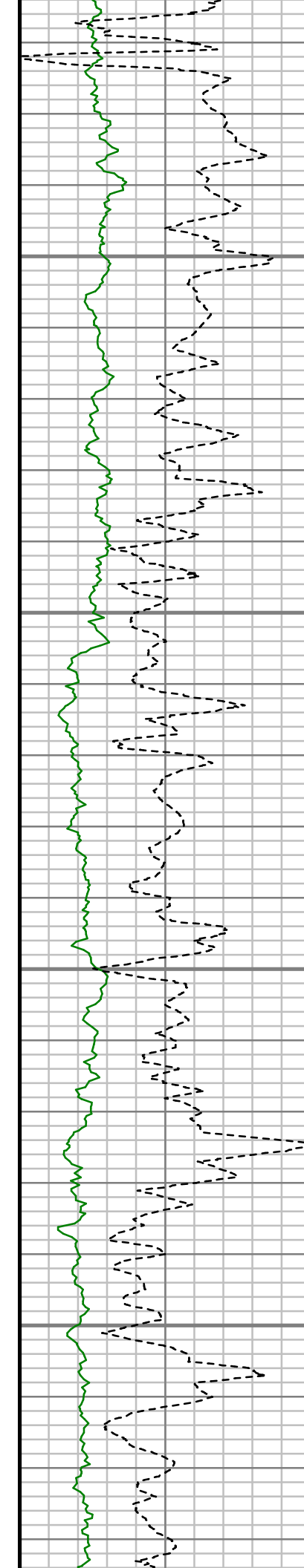
300

350

400



S: 3 MD: 322.00 ft Inc:
0.35 deg Az: 295.93
deg TVD: 322.00 ft

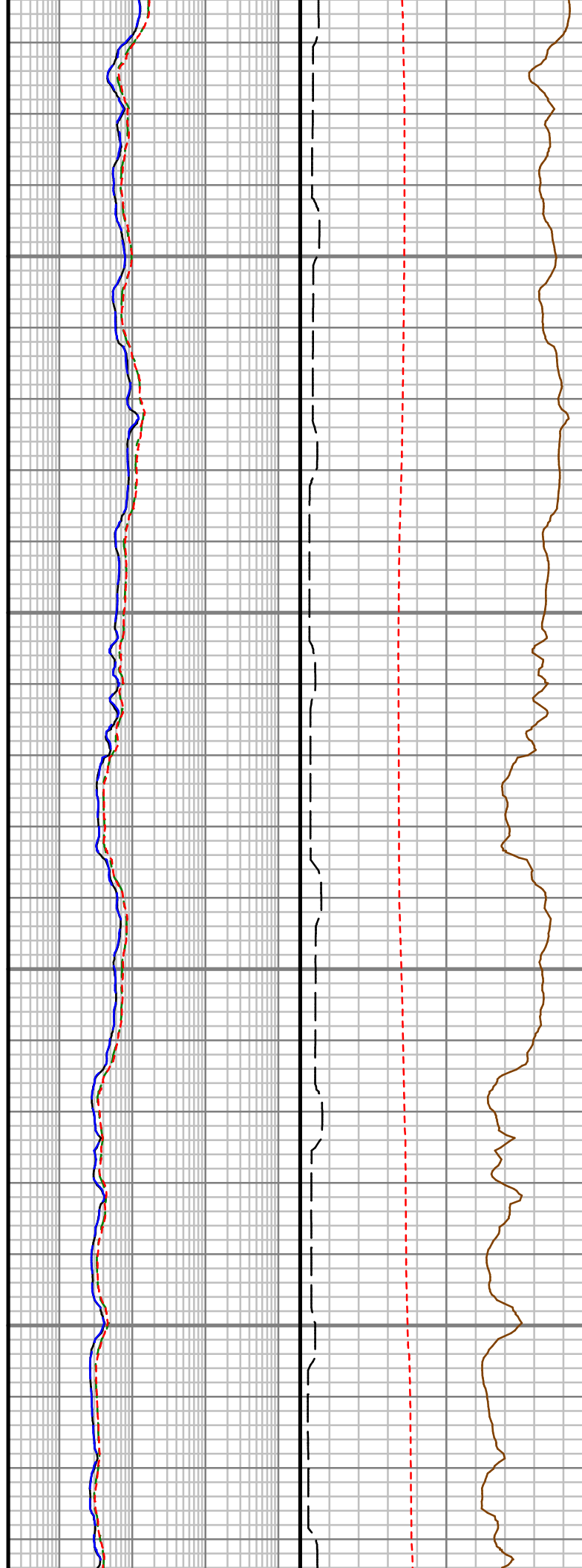


450

500

550

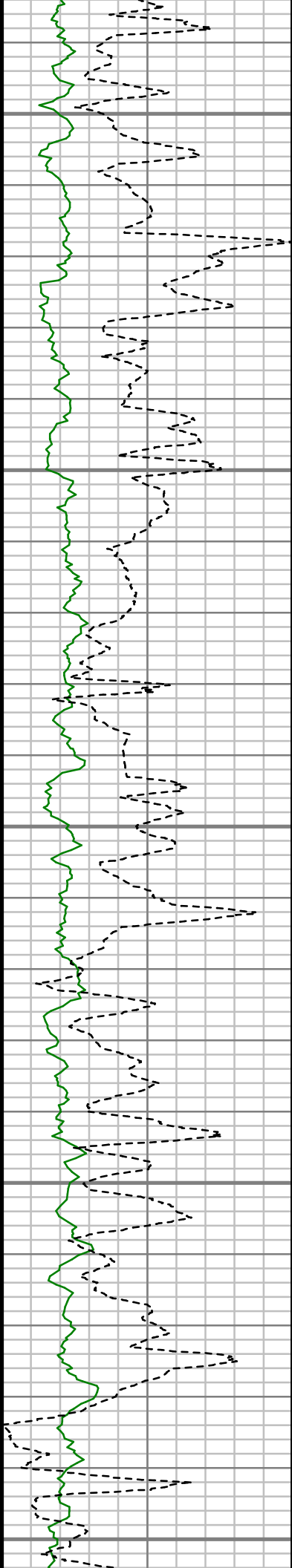
600



S: 4 MD: 416.00 ft Inc:
0.10 deg Az: 288.20
deg TVD: 416.00 ft

S: 5 MD: 509.00 ft Inc:
0.64 deg Az: 221.70
deg TVD: 509.00 ft

S: 6 MD: 602.00 ft Inc:
0.73 deg Az: 277.09
deg TVD: 601.99 ft



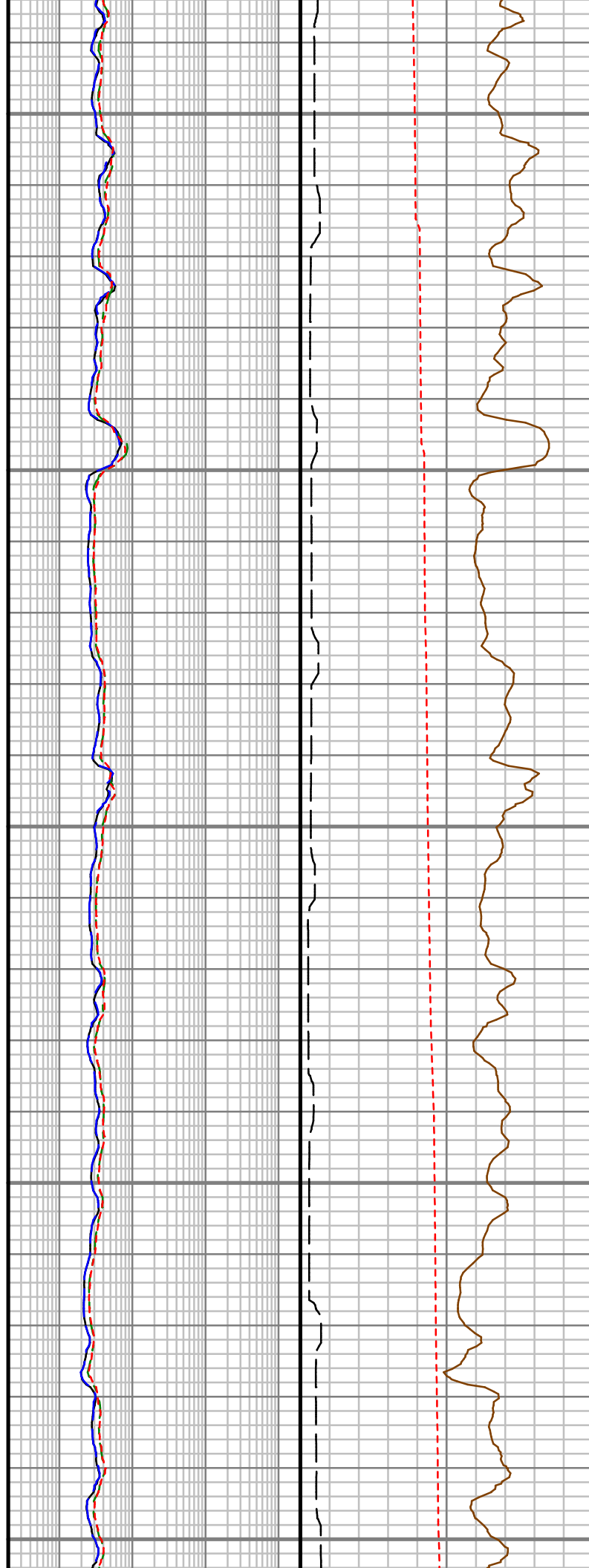
650

700

750

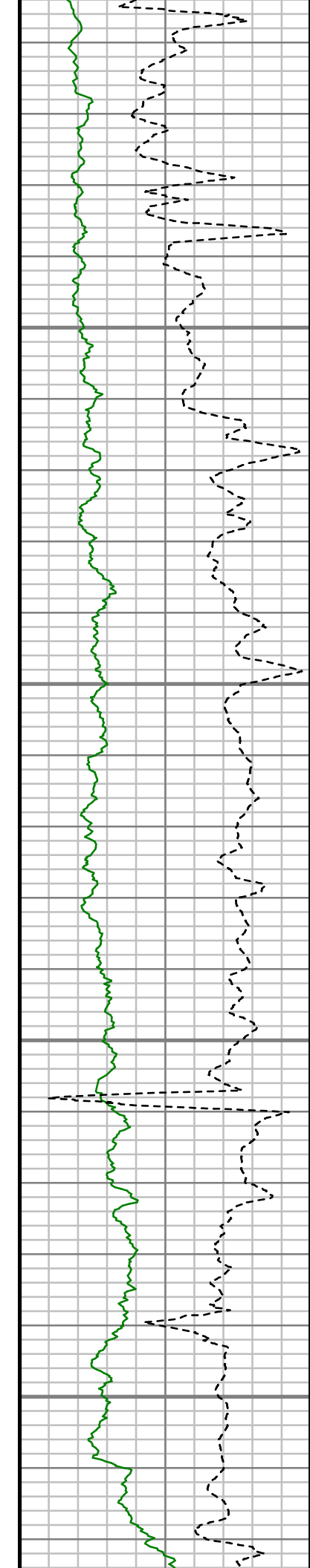
800

850



S: 7 MD: 696.00 ft Inc:
0.24 deg Az: 13.00 deg
TVD: 695.99 ft

S: 8 MD: 789.00 ft Inc:
0.27 deg Az: 28.08 deg
TVD: 788.99 ft

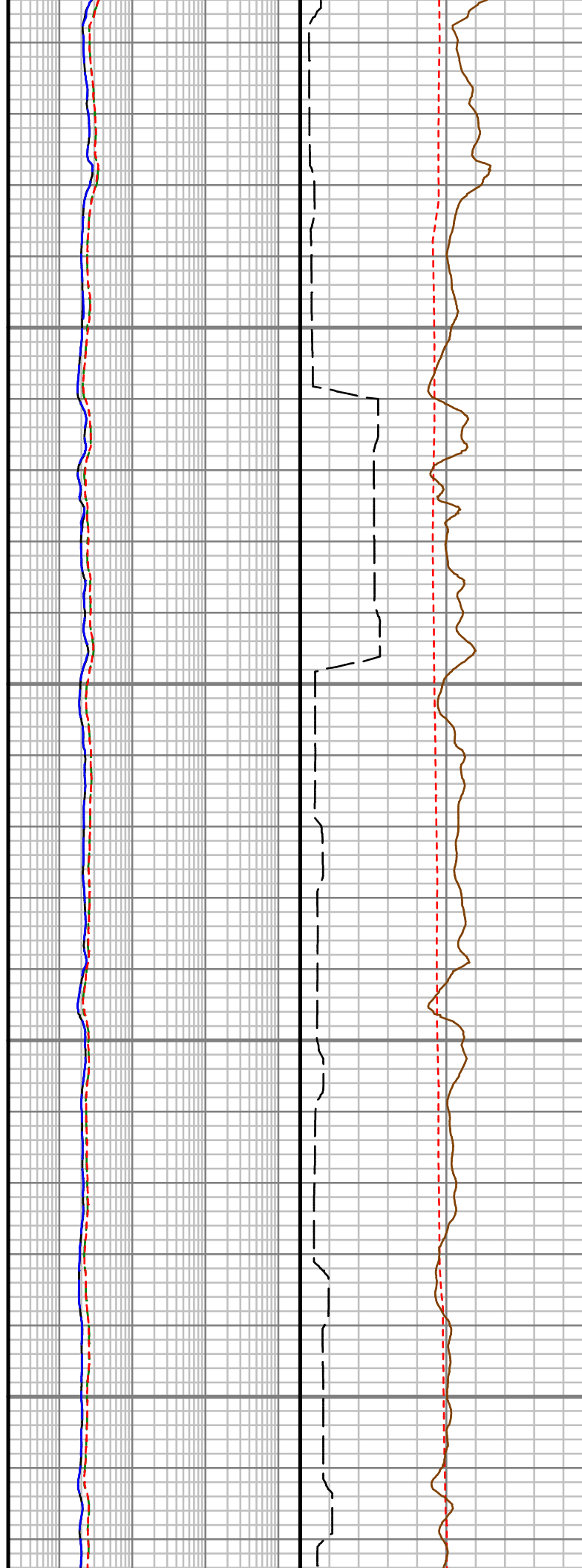


900

950

1000

1050

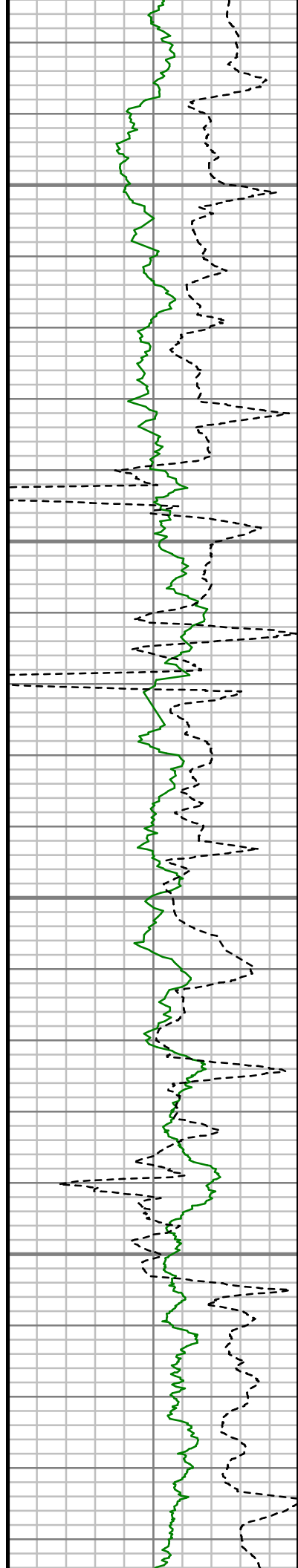


S: 9 MD: 881.00 ft Inc:
0.50 deg Az: 108.29
deg TVD: 880.98 ft

S: 10 MD: 974.00 ft
Inc: 0.34 deg Az: 77.37
deg TVD: 973.98 ft

S: 11 MD: 1034.00 ft
Inc: 1.14 deg Az:
273.09 deg TVD:
1033.98 ft

S: 12 MD: 1064.00 ft
Inc: 2.19 deg Az:
277.28 deg TVD:
1063.97 ft

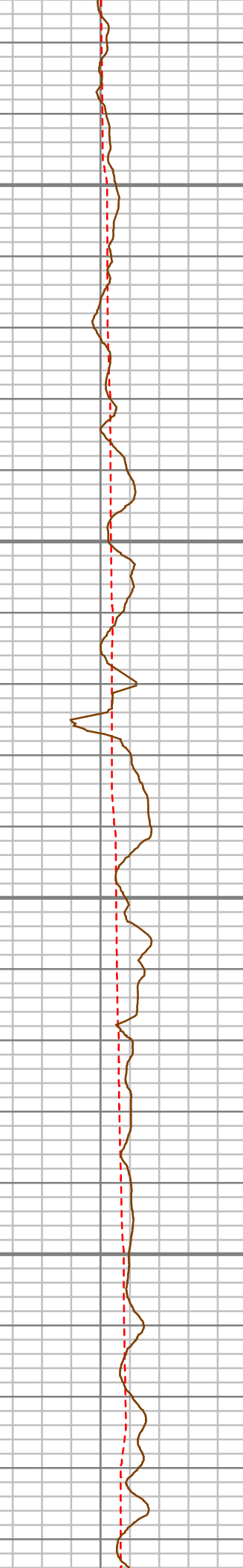
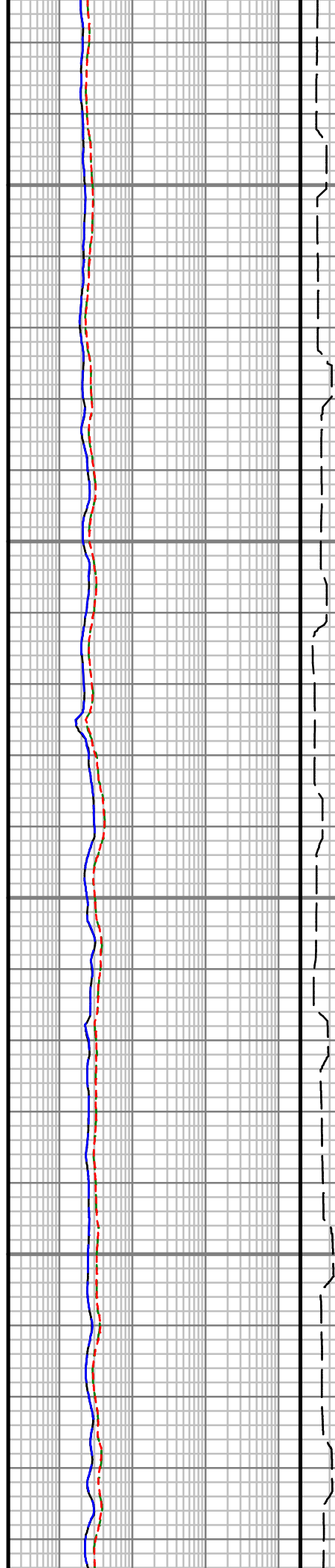


1100

1150

1200

1250



S: 13 MD: 1094.00 ft
Inc: 4.10 deg Az:
277.11 deg TVD:
1093.92 ft

S: 14 MD: 1125.00 ft
Inc: 6.02 deg Az:
285.03 deg TVD:
1124.80 ft

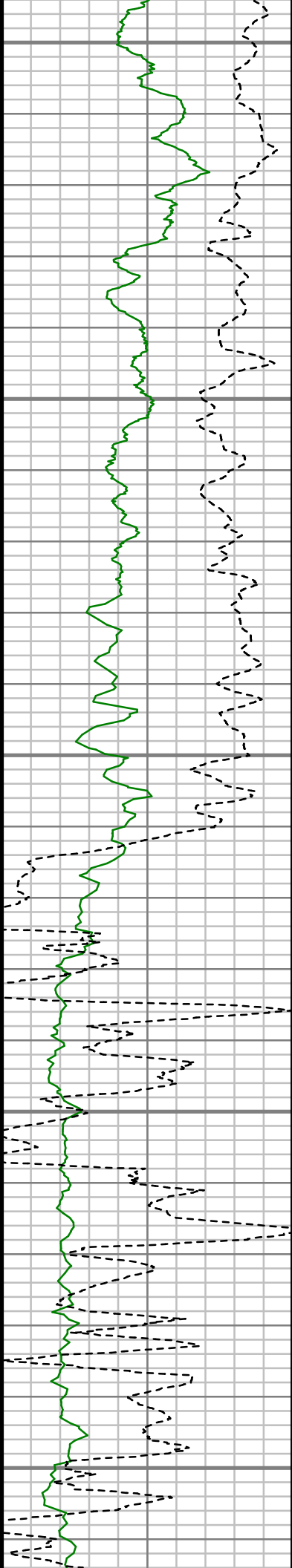
S: 15 MD: 1154.00 ft
Inc: 7.70 deg Az:
289.44 deg TVD:
1153.59 ft

S: 16 MD: 1184.00 ft
Inc: 8.19 deg Az:
290.76 deg TVD:
1183.30 ft

S: 17 MD: 1215.00 ft
Inc: 8.76 deg Az:
290.02 deg TVD:
1213.96 ft

S: 18 MD: 1246.00 ft
Inc: 10.03 deg Az:
288.64 deg TVD:
1244.55 ft

S: 19 MD: 1276.00 ft
Inc: 10.99 deg Az:
286.67 deg TVD:
1274.04 ft



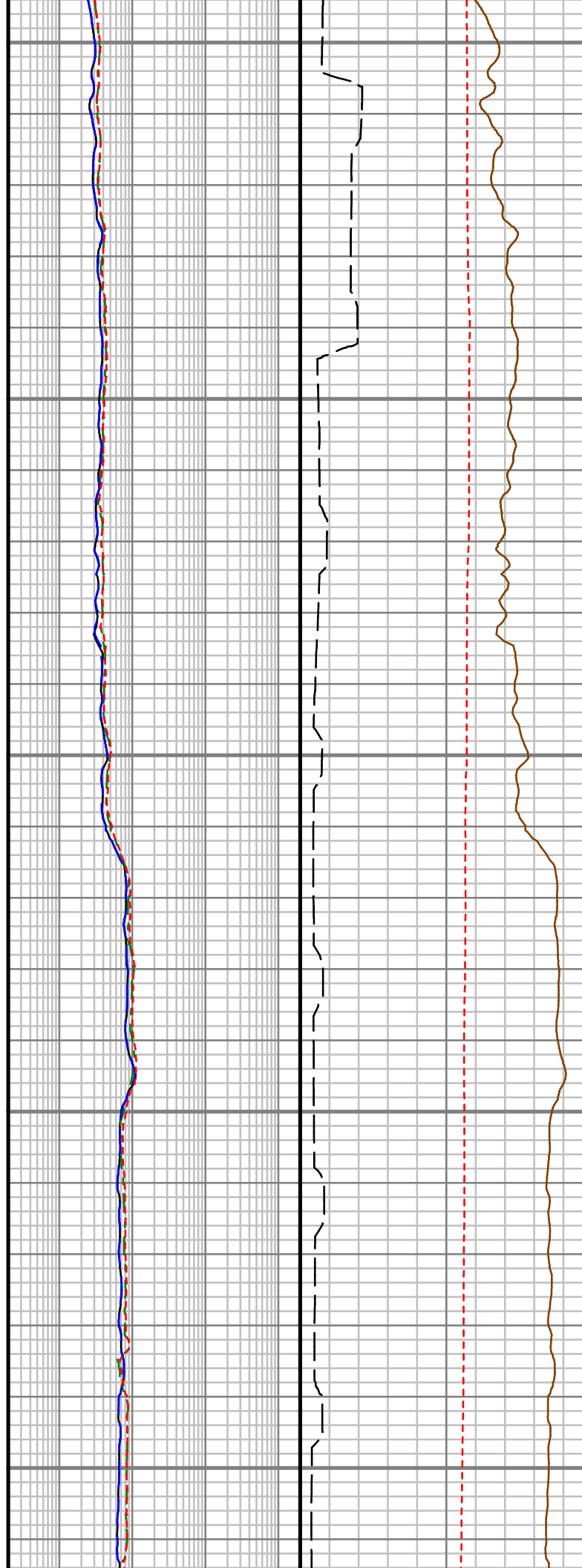
1300

1350

1400

1450

1500



S: 20 MD: 1307.00 ft
Inc: 12.16 deg Az:
284.13 deg TVD:
1304.41 ft

S: 21 MD: 1337.00 ft
Inc: 14.01 deg Az:
282.02 deg TVD:
1333.63 ft

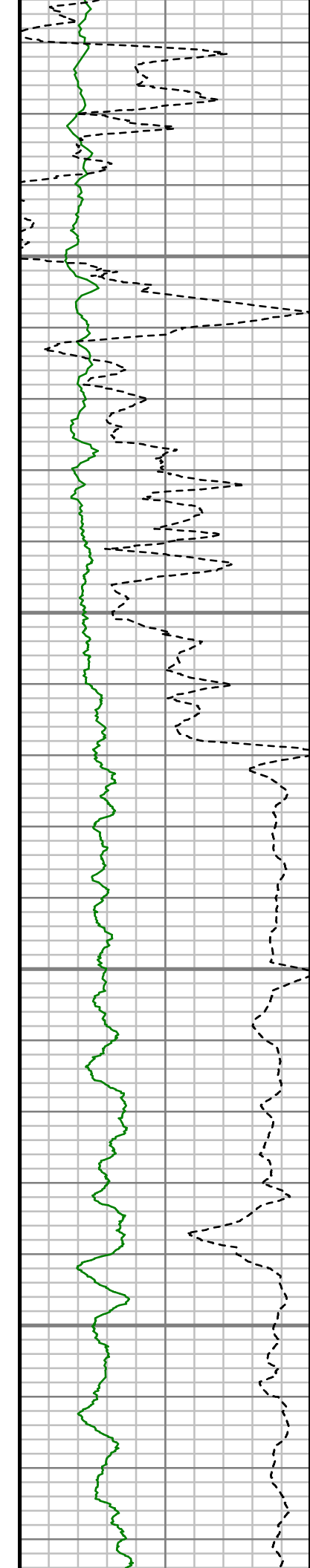
S: 22 MD: 1368.00 ft
Inc: 16.44 deg Az:
280.54 deg TVD:
1363.54 ft

S: 23 MD: 1399.00 ft
Inc: 19.02 deg Az:
281.57 deg TVD:
1393.07 ft

S: 24 MD: 1429.00 ft
Inc: 21.23 deg Az:
282.53 deg TVD:
1421.23 ft

S: 25 MD: 1460.00 ft
Inc: 22.94 deg Az:
283.63 deg TVD:
1449.96 ft

S: 26 MD: 1490.00 ft
Inc: 24.23 deg Az:
282.50 deg TVD:
1477.45 ft



1550

1600

1650

1700

S: 27 MD: 1521.00 ft
Inc: 26.52 deg Az:
282.93 deg TVD:
1505.46 ft

S: 28 MD: 1552.00 ft
Inc: 29.46 deg Az:
283.34 deg TVD:
1532.83 ft

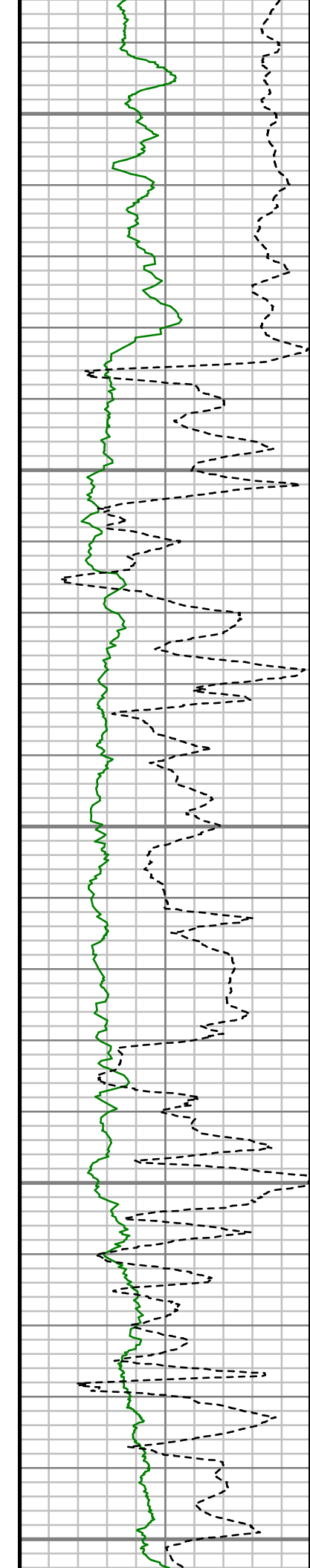
S: 29 MD: 1582.00 ft
Inc: 31.40 deg Az:
284.92 deg TVD:
1558.70 ft

S: 30 MD: 1613.00 ft
Inc: 32.58 deg Az:
285.14 deg TVD:
1584.99 ft

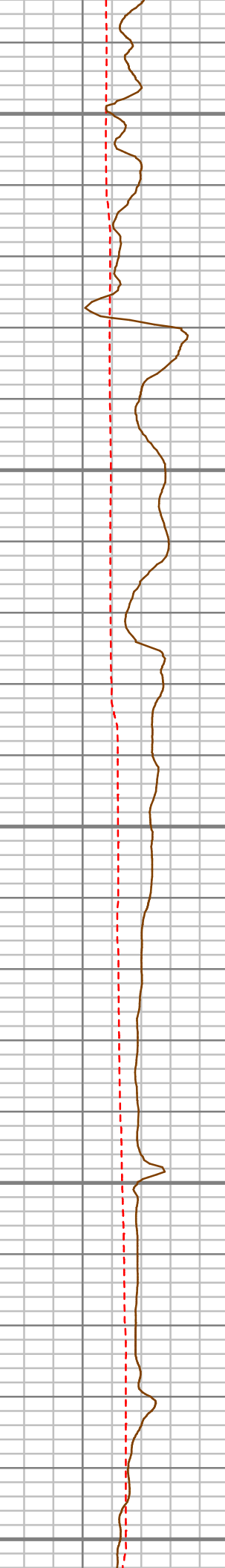
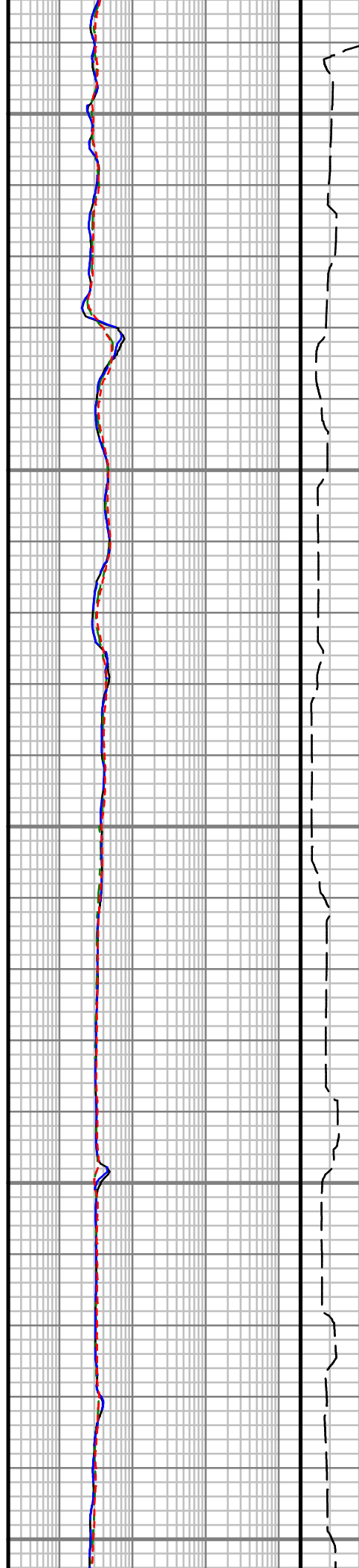
S: 31 MD: 1643.00 ft
Inc: 34.73 deg Az:
286.15 deg TVD:
1609.96 ft

S: 32 MD: 1673.00 ft
Inc: 36.34 deg Az:
289.16 deg TVD:
1634.37 ft

S: 33 MD: 1704.00 ft
Inc: 37.23 deg Az:
293.70 deg TVD:
1659.21 ft



1750
1800
1850
1900
1950



S: 34 MD: 1735.00 ft
Inc: 38.71 deg Az:
299.03 deg TVD:
1683.65 ft

S: 35 MD: 1765.00 ft
Inc: 39.98 deg Az:
303.24 deg TVD:
1706.85 ft

S: 36 MD: 1796.00 ft
Inc: 41.59 deg Az:
306.29 deg TVD:
1730.33 ft

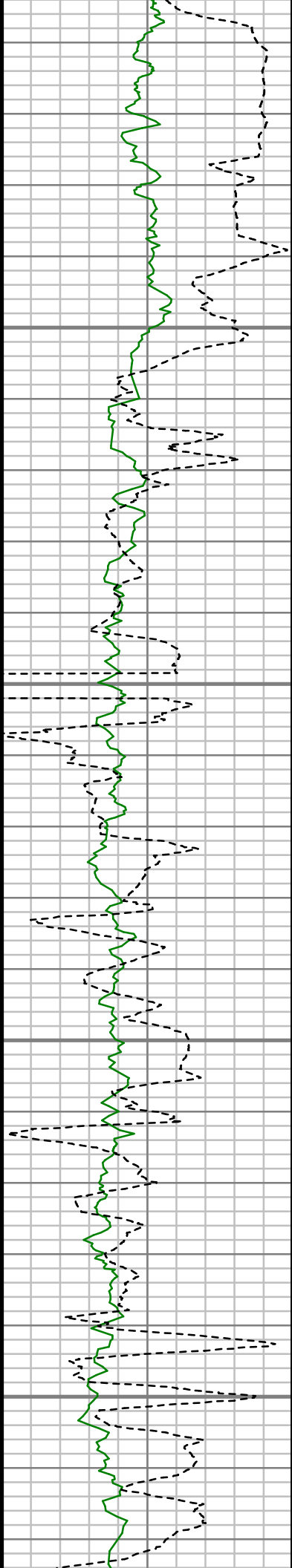
S: 37 MD: 1828.00 ft
Inc: 43.78 deg Az:
308.56 deg TVD:
1753.85 ft

S: 38 MD: 1859.00 ft
Inc: 45.05 deg Az:
309.87 deg TVD:
1775.99 ft

S: 39 MD: 1890.00 ft
Inc: 46.36 deg Az:
311.98 deg TVD:
1797.64 ft

S: 40 MD: 1921.00 ft
Inc: 47.04 deg Az:
314.02 deg TVD:
1818.90 ft

S: 41 MD: 1952.00 ft

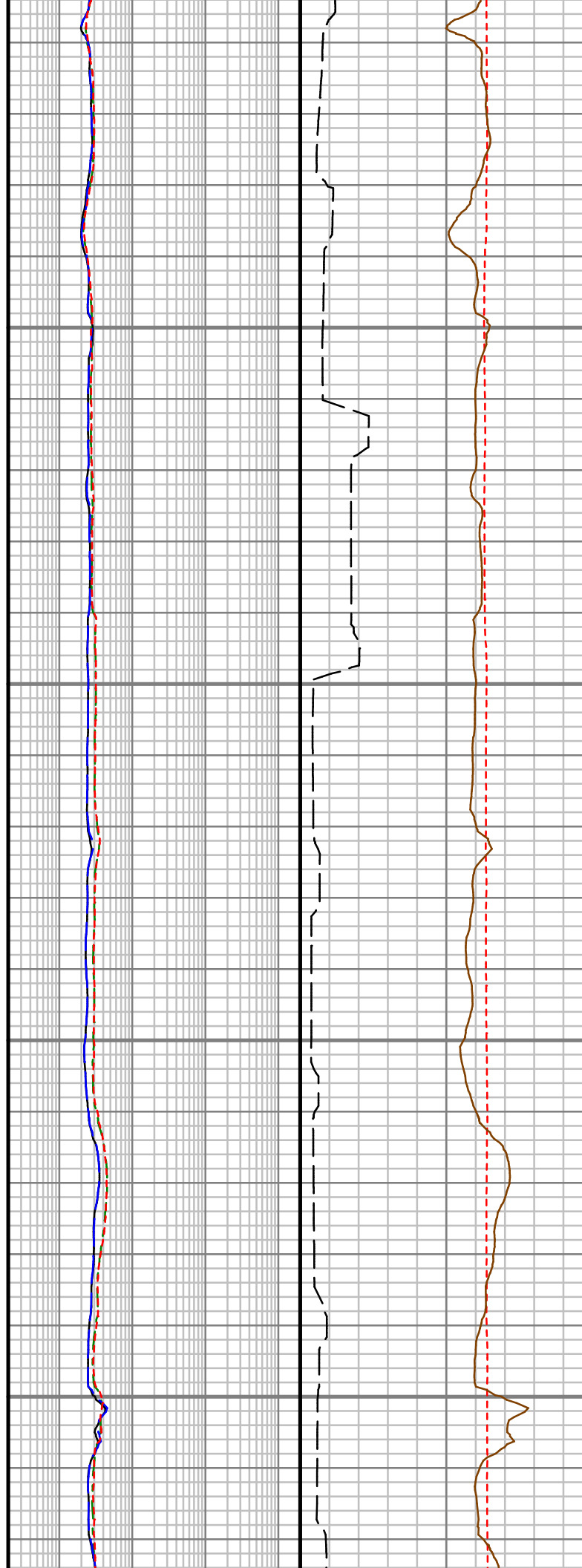


2000

2050

2100

2150



Inc: 48.54 deg Az:
316.62 deg TVD:
1839.73 ft

S: 42 MD: 1983.00 ft
Inc: 50.61 deg Az:
319.29 deg TVD:
1859.83 ft

S: 43 MD: 2015.00 ft
Inc: 53.26 deg Az:
322.01 deg TVD:
1879.56 ft

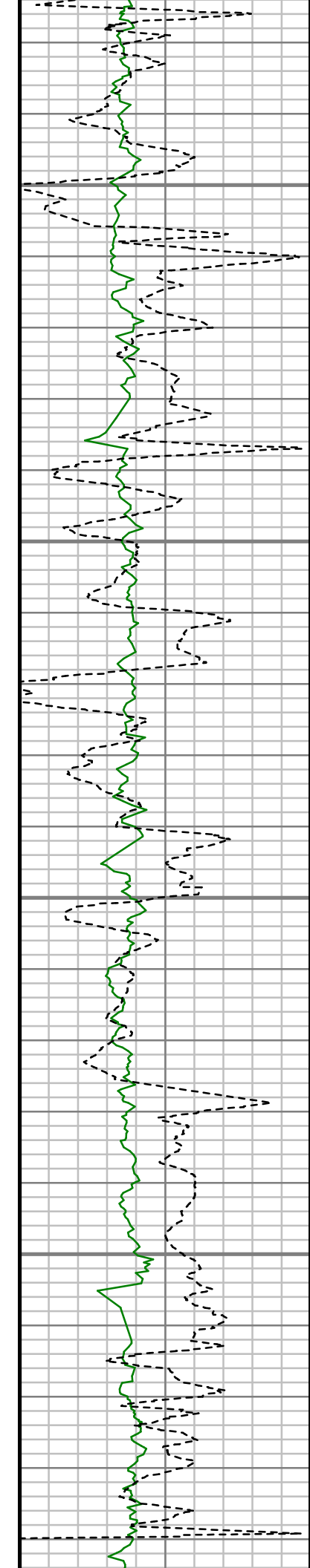
S: 44 MD: 2046.00 ft
Inc: 54.58 deg Az:
324.75 deg TVD:
1897.82 ft

S: 45 MD: 2077.00 ft
Inc: 56.57 deg Az:
326.79 deg TVD:
1915.35 ft

S: 46 MD: 2108.00 ft
Inc: 59.20 deg Az:
328.52 deg TVD:
1931.83 ft

S: 47 MD: 2139.00 ft
Inc: 61.76 deg Az:
330.24 deg TVD:
1947.10 ft

S: 48 MD: 2170.00 ft
Inc: 64.16 deg Az:

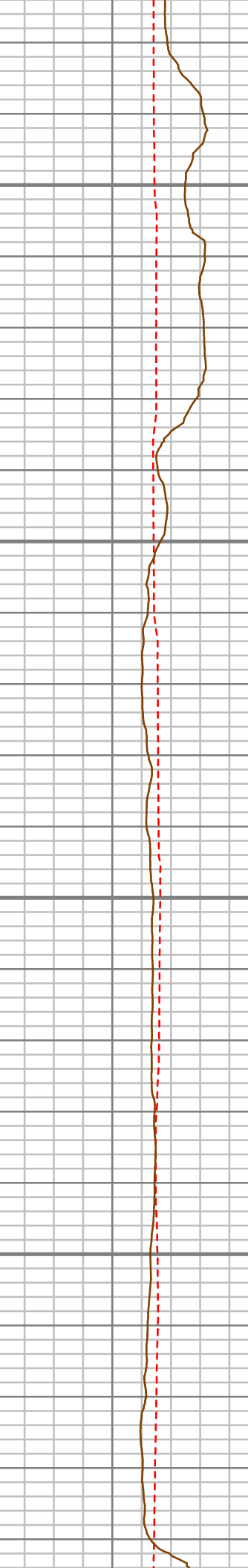
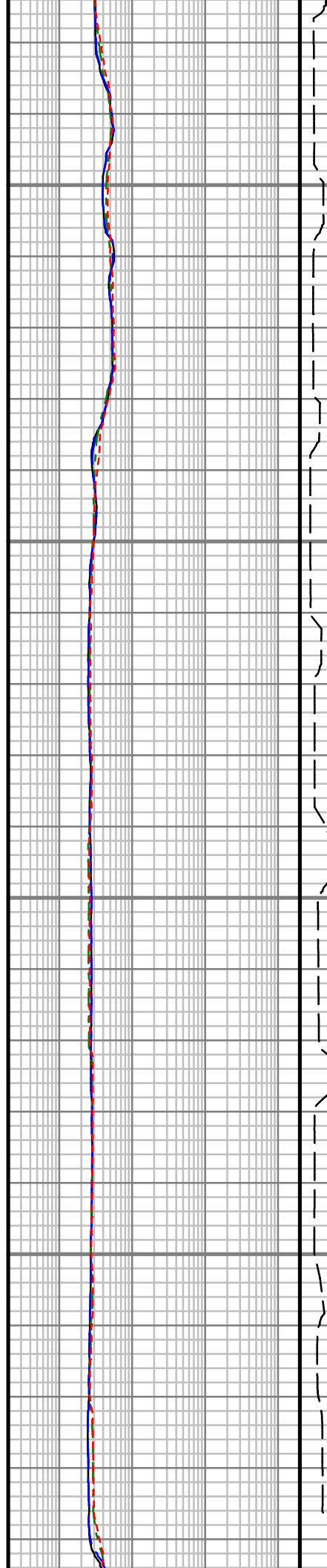


2200

2250

2300

2350



Inc: 67.16 deg Az:
332.75 deg TVD:
1961.20 ft

S: 49 MD: 2201.00 ft
Inc: 65.67 deg Az:
336.62 deg TVD:
1974.34 ft

S: 50 MD: 2233.00 ft
Inc: 67.79 deg Az:
335.32 deg TVD:
1986.98 ft

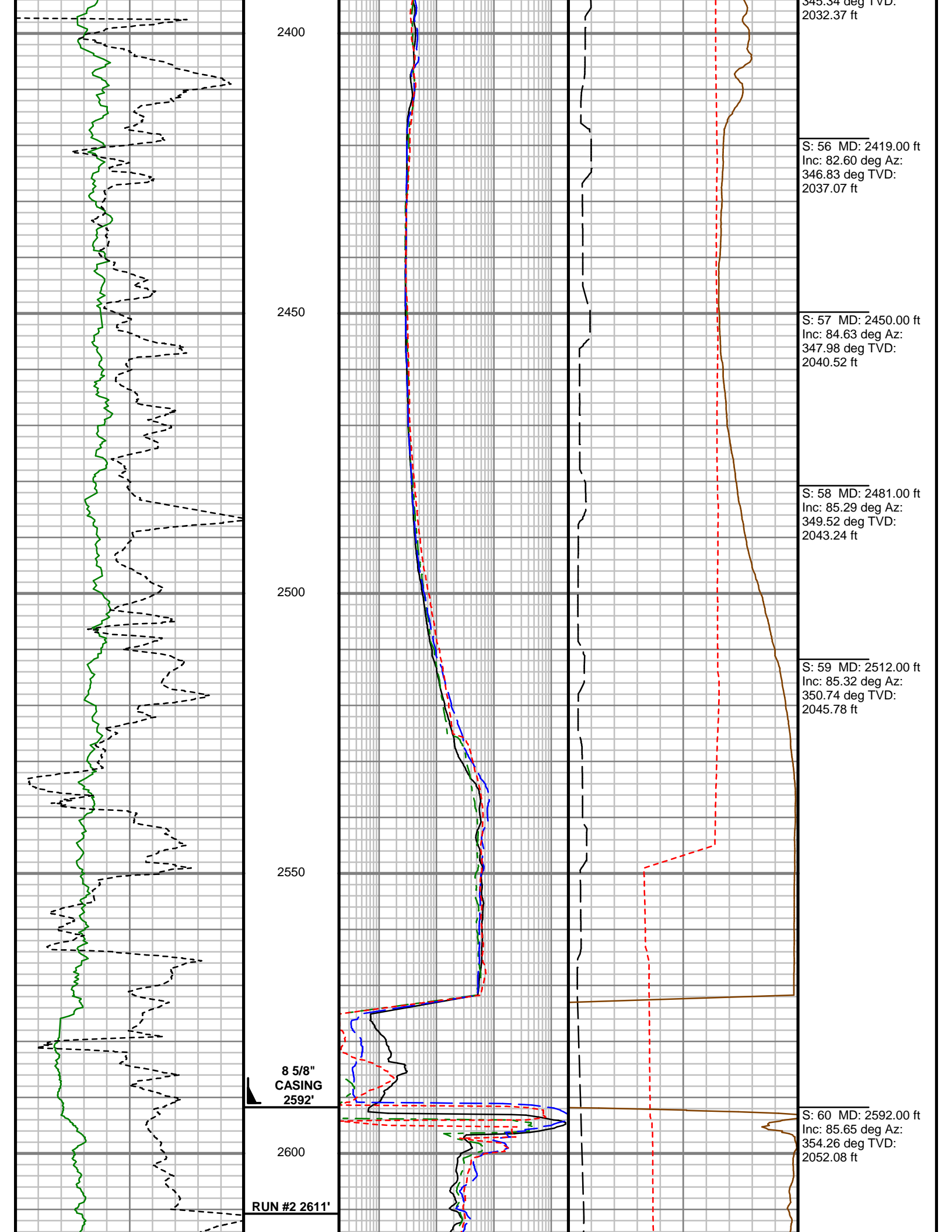
S: 51 MD: 2264.00 ft
Inc: 69.51 deg Az:
336.82 deg TVD:
1998.27 ft

S: 52 MD: 2295.00 ft
Inc: 71.15 deg Az:
339.07 deg TVD:
2008.70 ft

S: 53 MD: 2326.00 ft
Inc: 73.44 deg Az:
341.37 deg TVD:
2018.13 ft

S: 54 MD: 2357.00 ft
Inc: 76.72 deg Az:
343.55 deg TVD:
2026.11 ft

S: 55 MD: 2388.00 ft
Inc: 79.97 deg Az:
345.34 deg TVD:
2033.11 ft



2400

2450

2500

2550

2600

8 5/8"
CASING
2592'

RUN #2 2611'

345.34 deg TVD:
2032.37 ft

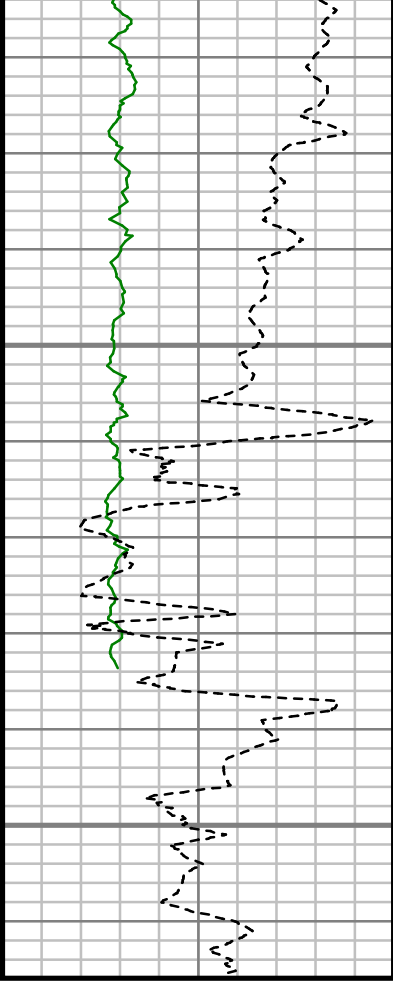
S: 56 MD: 2419.00 ft
Inc: 82.60 deg Az:
346.83 deg TVD:
2037.07 ft

S: 57 MD: 2450.00 ft
Inc: 84.63 deg Az:
347.98 deg TVD:
2040.52 ft

S: 58 MD: 2481.00 ft
Inc: 85.29 deg Az:
349.52 deg TVD:
2043.24 ft

S: 59 MD: 2512.00 ft
Inc: 85.32 deg Az:
350.74 deg TVD:
2045.78 ft

S: 60 MD: 2592.00 ft
Inc: 85.65 deg Az:
354.26 deg TVD:
2052.08 ft

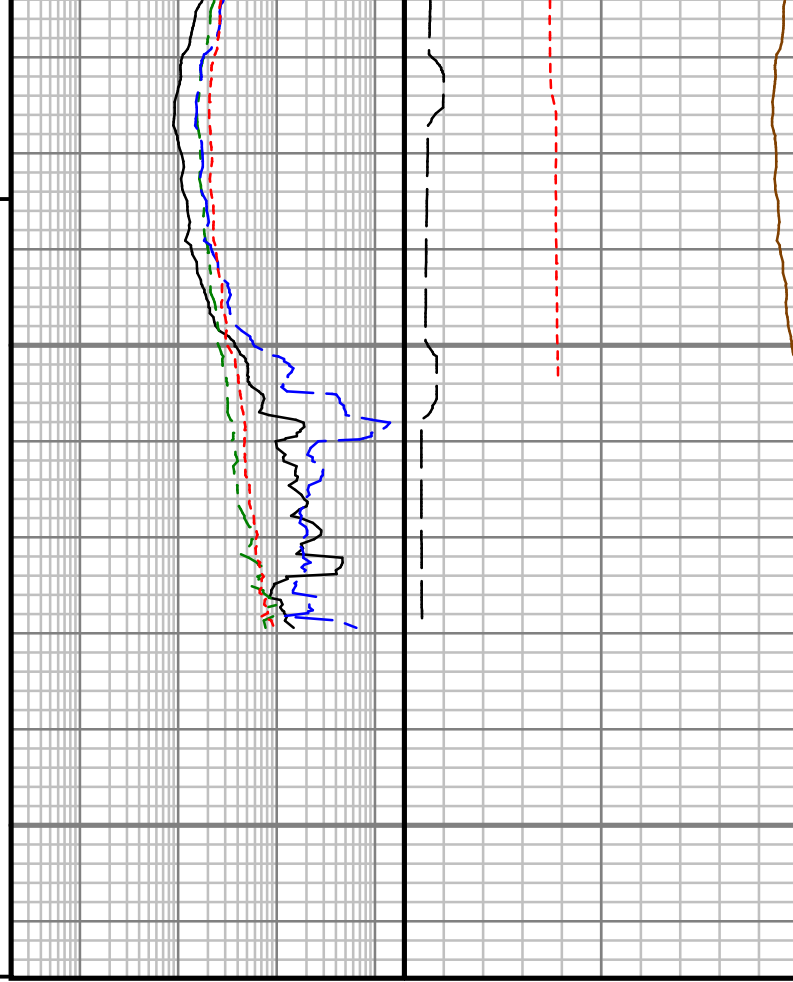


REMARK #1

2650

2700

TD 2716'



S: 61 MD: 2623.00 ft
 Inc: 90.13 deg Az:
 355.67 deg TVD:
 2053.22 ft

S: 62 MD: 2654.00 ft
 Inc: 96.02 deg Az:
 357.52 deg TVD:
 2051.56 ft

Rate of Penetration (ROP)		
500	Unit = ft/hr	0
GAIN - Gamma Ray (G-GR)		
0	Unit = aapi	150

MEASURED DEPTH
 1:240 (#)

Attenuation Resistivity, 33" (AR33)		
0.2	Unit = ohmm	2000
Phase Shift Resistivity, 33" (PR33)		
0.2	Unit = ohmm	2000
Attenuation Resistivity, 23" (AR23)		
0.2	Unit = ohmm	2000
Phase Shift Resistivity, 23" (PR23)		
0.2	Unit = ohmm	2000

Phase Shift Conductivity, 33" (PC33)		
1000	Unit = mmho/m	0
Tool Temperature (T-TEMP)		
50	Unit = °F	150
FET of Resistivity (FETR)		
0	Unit = hr	10

Comments

Customer Name:	TRIO PETROLRUM LLC
Site Name:	SECTION 23
Well Name:	HH-4
Survey:	HH-4
Survey Date:	11/22/2013
Magnetic Declination:	13.28 deg
Grid Correction:	1.11 deg
North Reference:	Grid North
Calculation Method:	Minimum Curvature
Section (VS) Ref:	0.00N (ft), 0.00E (ft), 341.22Azim (deg)

MD ft	Inc deg	Azim deg	TVD ft	VS ft	+N/-S ft	+E/-W ft	DLS 7100ft
0.00	0.00	0.00	0.00	0.00	0.00	0.00	Invalid
104.00	0.27	206.99	104.00	-0.17	-0.22	-0.11	0.26
229.00	0.17	308.01	229.00	-0.22	-0.37	-0.39	0.28
322.00	0.35	295.93	322.00	0.09	-0.16	-0.75	0.20
416.00	0.10	288.20	416.00	0.34	-0.01	-1.08	0.26
509.00	0.64	221.70	509.00	0.13	-0.38	-1.51	0.65
602.00	0.73	277.09	601.99	0.13	-0.69	-2.44	0.69
696.00	0.24	13.00	695.99	0.57	-0.42	-2.99	0.85

MD ft	Inc deg	Azim deg	TVD ft	VS ft	+N/-S ft	+E/-W ft	DLS 7100ft
789.00	0.27	28.08	788.99	0.88	-0.03	-2.85	0.08
881.00	0.50	108.29	880.98	0.79	0.03	-2.36	0.57
974.00	0.34	77.37	973.98	0.52	-0.04	-1.71	0.29
1034.00	1.14	273.09	1033.98	0.72	0.04	-2.13	2.46
1064.00	2.19	277.28	1063.97	1.08	0.12	-3.00	3.50
1094.00	4.10	277.11	1093.92	1.80	0.33	-4.63	6.36
1125.00	6.02	285.03	1124.80	3.19	0.89	-7.30	6.60
1154.00	7.70	289.44	1153.59	5.24	1.93	-10.60	6.07
1184.00	8.19	290.76	1183.30	7.84	3.36	-14.49	1.74
1215.00	8.76	290.02	1213.96	10.73	4.95	-18.78	1.86
1246.00	10.03	288.64	1244.55	13.85	6.62	-23.55	4.17
1276.00	10.99	286.67	1274.04	17.09	8.27	-28.77	3.42
1307.00	12.16	284.13	1304.41	20.58	9.92	-34.76	4.10
1337.00	14.01	282.02	1333.63	24.16	11.45	-41.38	6.37
1368.00	16.44	280.54	1363.54	28.23	13.03	-49.36	7.95
1399.00	19.02	281.57	1393.07	32.93	14.84	-58.62	8.38
1429.00	21.23	282.53	1421.23	38.22	17.00	-68.72	7.45
1460.00	22.94	283.63	1449.96	44.37	19.64	-80.07	5.68
1490.00	24.23	282.50	1477.45	50.70	22.35	-91.76	4.57
1521.00	26.52	282.93	1505.46	57.65	25.28	-104.72	7.42

MD ft	Inc deg	Azim deg	TVD ft	VS ft	+N/-S ft	+E/-W ft	DLS 7100ft
1552.00	29.46	283.34	1532.83	65.34	28.59	-118.88	9.50
1582.00	31.40	284.92	1558.70	73.60	32.30	-133.62	6.99
1613.00	32.58	285.14	1584.99	82.74	36.56	-149.48	3.81
1643.00	34.73	286.15	1609.96	92.14	41.05	-165.48	7.43
1673.00	36.34	289.16	1634.37	102.50	46.35	-182.09	7.91
1704.00	37.23	293.70	1659.21	114.48	53.13	-199.35	9.23
1735.00	38.71	299.03	1683.65	128.00	61.61	-216.42	11.59
1765.00	39.98	303.24	1706.85	142.55	71.45	-232.69	9.86
1796.00	41.59	306.29	1730.33	158.84	83.00	-249.32	8.26
1828.00	43.78	308.56	1753.85	176.87	96.19	-266.54	8.37
1859.00	45.05	309.87	1775.99	195.27	109.90	-283.34	5.03
1890.00	46.36	311.98	1797.64	214.43	124.44	-300.11	6.46
1921.00	47.04	314.02	1818.90	234.31	139.83	-316.60	5.28
1952.00	48.54	316.62	1839.73	254.96	156.16	-332.74	7.86
1983.00	50.61	319.29	1859.83	276.64	173.68	-348.53	9.36
2015.00	53.26	322.01	1879.56	300.23	193.16	-364.50	10.64
2046.00	54.58	324.75	1897.82	324.07	213.27	-379.44	8.32
2077.00	56.57	326.79	1915.35	348.72	234.41	-393.81	8.39
2108.00	59.20	328.52	1931.83	374.24	256.59	-407.85	9.73

MD ft	Inc deg	Azim deg	TVD ft	VS ft	+N/-S ft	+E/-W ft	DLS 7100ft
2139.00	61.76	330.24	1947.10	400.64	279.81	-421.59	9.57
2170.00	64.16	332.75	1961.20	427.85	304.07	-434.76	10.58
2201.00	65.67	333.62	1974.34	455.65	329.13	-447.42	5.49
2233.00	67.79	335.32	1986.98	484.84	355.65	-460.09	8.25
2264.00	69.51	336.82	1998.27	513.59	382.04	-471.79	7.14
2295.00	71.15	339.07	2008.70	542.73	409.10	-482.75	8.64
2326.00	73.44	341.37	2018.13	572.26	436.88	-492.74	10.22
2357.00	76.72	343.55	2026.11	602.20	465.44	-501.76	12.57
2388.00	79.97	345.34	2032.37	632.50	494.68	-509.90	11.91
2419.00	82.60	346.83	2037.07	663.03	524.42	-517.27	9.71
2450.00	84.63	347.98	2040.52	693.66	554.49	-523.99	7.53
2481.00	85.29	349.52	2043.24	724.27	584.77	-530.01	5.38
2512.00	85.32	350.74	2045.78	754.79	615.21	-535.30	3.92
2592.00	85.65	354.26	2052.08	832.99	694.27	-545.71	4.41
2623.00	90.13	355.67	2053.22	863.07	725.12	-548.42	15.16
2654.00	96.02	357.52	2051.56	892.91	756.01	-550.26	19.91



PROPAGATION RESISTIVITY
GAMMA RAY

5" = 100' FEET MD