



5" = 100' FEET TVD

COMPANY : TRIO PETROLRUM LLC
WELL : HH-4
FIELD : HANGMAN HOLLOW
COUNTY : MONTEREY
STATE : CALIFORNIA
COUNTRY : US
UWI :

COMPANY : TRIO PETROLRUM LLC
WELL : HH-4
FIELD : HANGMAN HOLLOW
COUNTY : MONTEREY
STATE : CALIFORNIA
COUNTRY : US
UWI :

WELL LOCATION
LAT: 35°59'39.974"N LONG: 120°51'41.634"W
N: 1886431.79 Ft E: 6011000.61 Ft
SEC: 23 TWP: 22S RANGE: 10E

OTHER SERVICES

DIRECTIONAL

ROP

CONDUCTIVITY

FEET

DEPTH REF. : RKB

REF. HEIGHT : 10.000 Ft

RKB to Ground Level

GROUND LEVEL : 717.930 Ft

G.L. to MEAN SEA LEVEL

BOREHOLE RECORD

DEVIATION RECORD

HOLE SIZE in	FROM Ft	TO Ft	INCLINATION deg	FROM Ft	TO Ft
11	0	2611	0-1	0	1000
7 7/8	2611	3812	1-96 (+/-1)	1000	2716
CASING RECORD					
CASING SIZE in	FROM Ft	TO Ft			
8 5/8	0	2592			

DRILLING CO. : ENSIGN

RIG : 509

LWD UNIT NO. : LWD 6 DISTRICT : BAKERSFIELD

SPUD DATE : 11-22-2013

LWD START DATE : 11-22-2013

LWD END DATE : 11/26/13

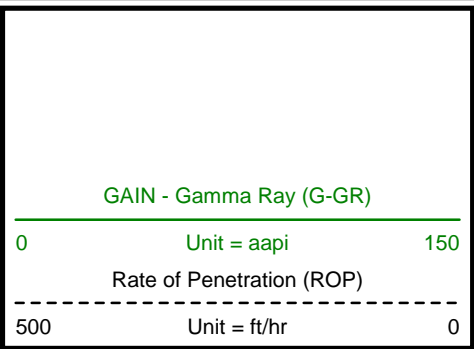
TOTAL DEPTH : 2716 Ft

Run Data

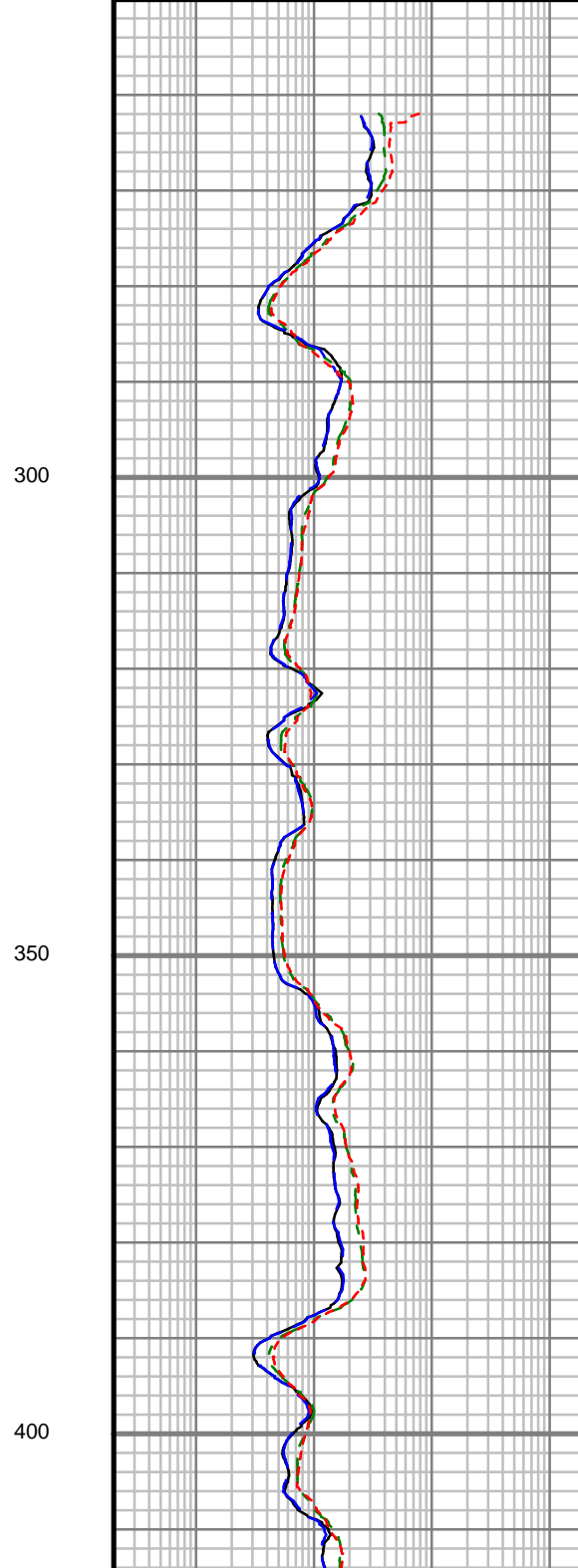
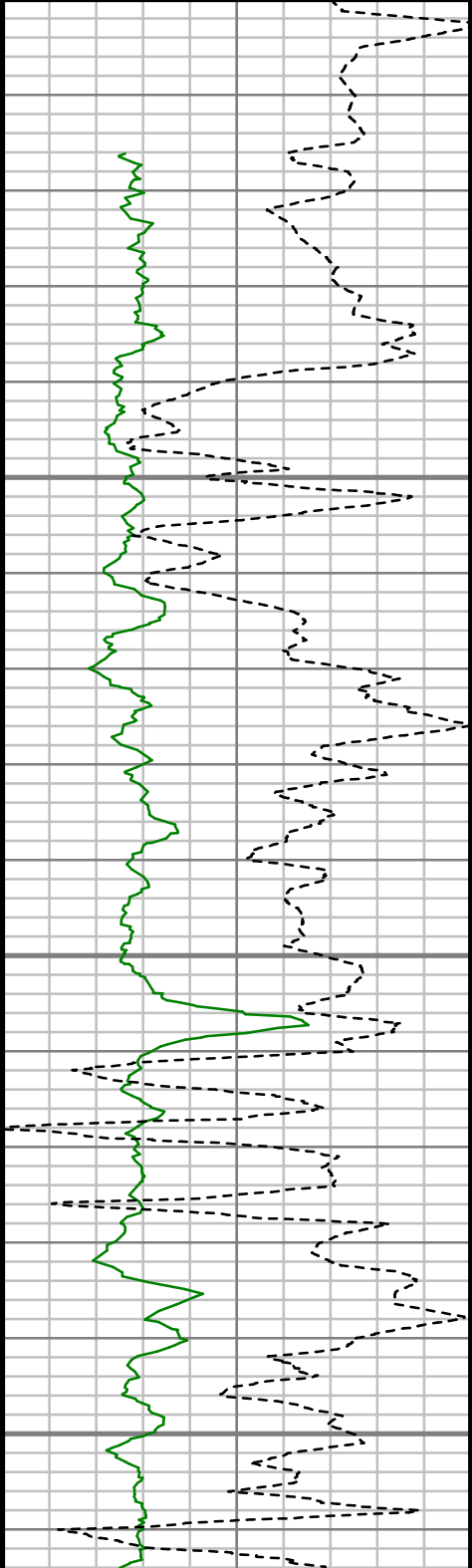
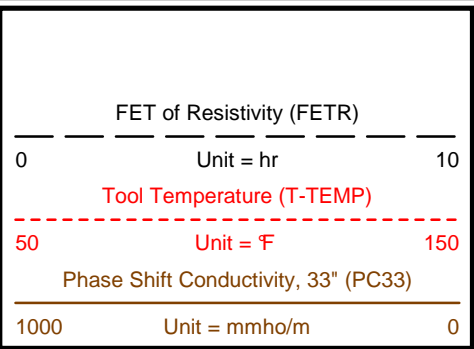
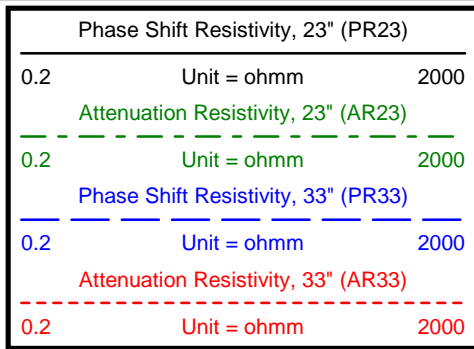
RUN NUMBER	1	2			
START DATE	11/22/13	11/25/13			
START TIME	05:00	17:00			
END DATE	11/24/13	11/26/13			
END TIME	08:00	06:00			
DEPTH IN (ft)	261	2611			
DEPTH OUT (ft)	2611	2635			
LOG TOP (ft)	265	2611			
LOG BOTTOM (ft)	2611	2611			
HOLE SIZE (in)	11	7 7/8			
MUD DATA @ (ft)	1538	2630			
MUD TYPE	LSND	GEOZAN			
DENSITY (lb / gal)	9.0	8.5			
VISCOSITY (s / qt)	47	38			
pH	8	8.5			
FLUID LOSS (cm3 / 30)	5.7	15.3			
SALINITY (ppm)	550	17200			
Rm (ohmm @ deg F)	-	-			
Rmf (ohmm @ deg F)	-	-			
MAX TEMP (deg F)	113	103			
Rm @ MAX TEMP (ohmm)	-	-			
LWD ENGINEER #1	J. BIHM	J. BIHM			
LWD ENGINEER #2	L. CLEVINGER	L. CLEVINGER			
LWD ENGINEER #3	N. LUTU	N. LUTU			
LOG WITNESS #1					
LOG WITNESS #2					

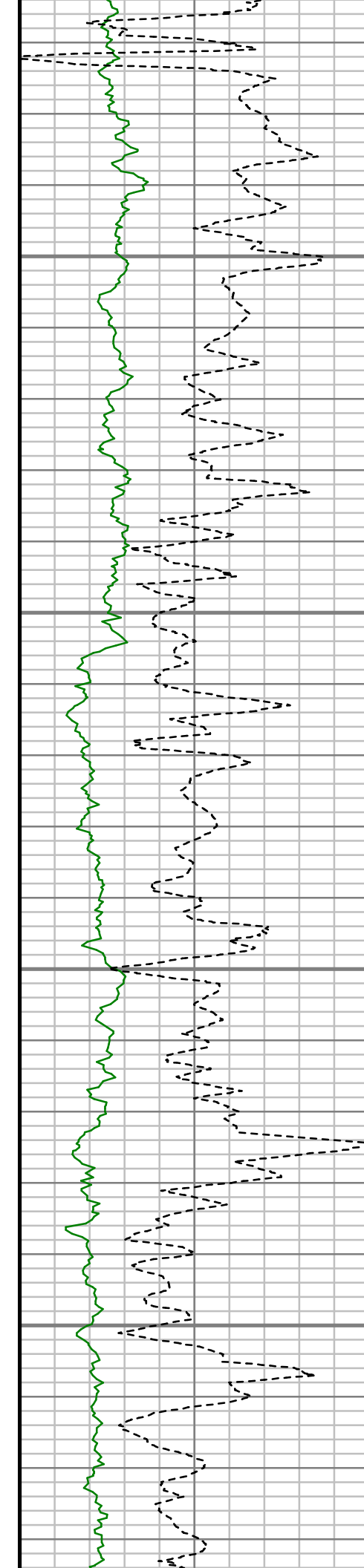
All interpretations are opinions based on inferences from electrical and other measurements and we cannot, and do not guarantee the accuracy or correctness of any interpretations, and we shall not, except in the case of gross or willful negligence on our part, be liable or responsible for any loss, costs, damages or expenses incurred or sustained by anyone resulting from any interpretation made by any of our officers, agents or employees. These interpretations are also subject to our general terms and conditions as set out in our current price schedule.

FINAL COPY



TRUE VERTICAL DEPTH
 1:240 (ft)



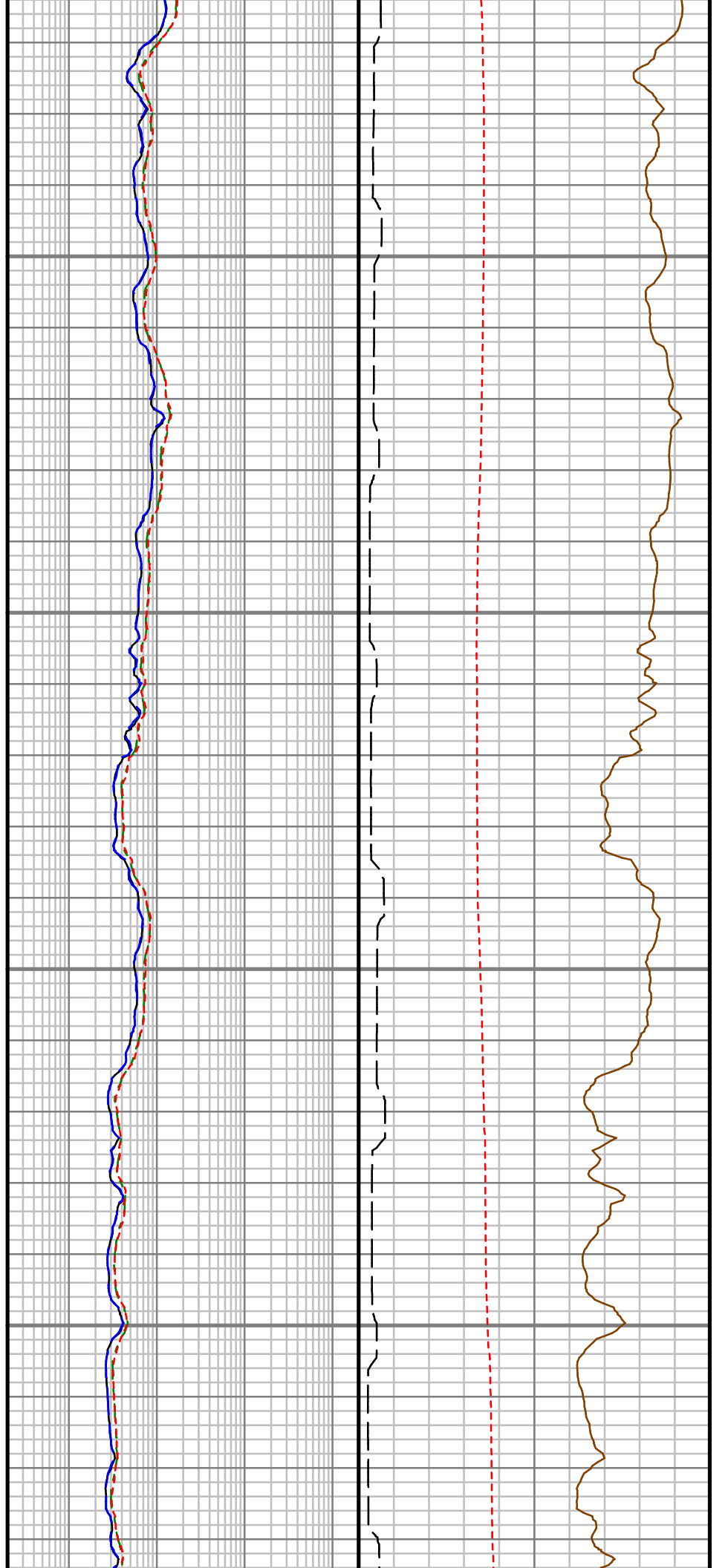


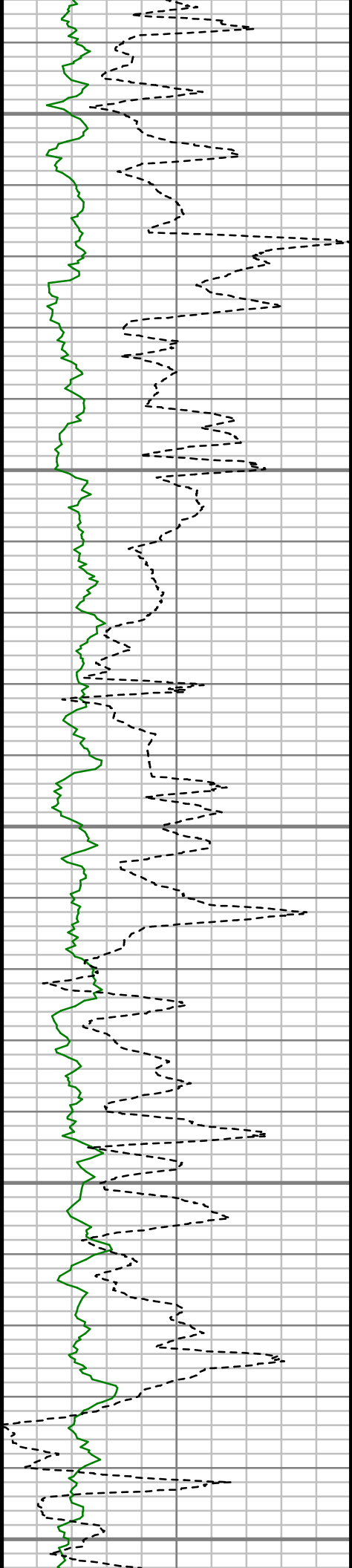
450

500

550

600





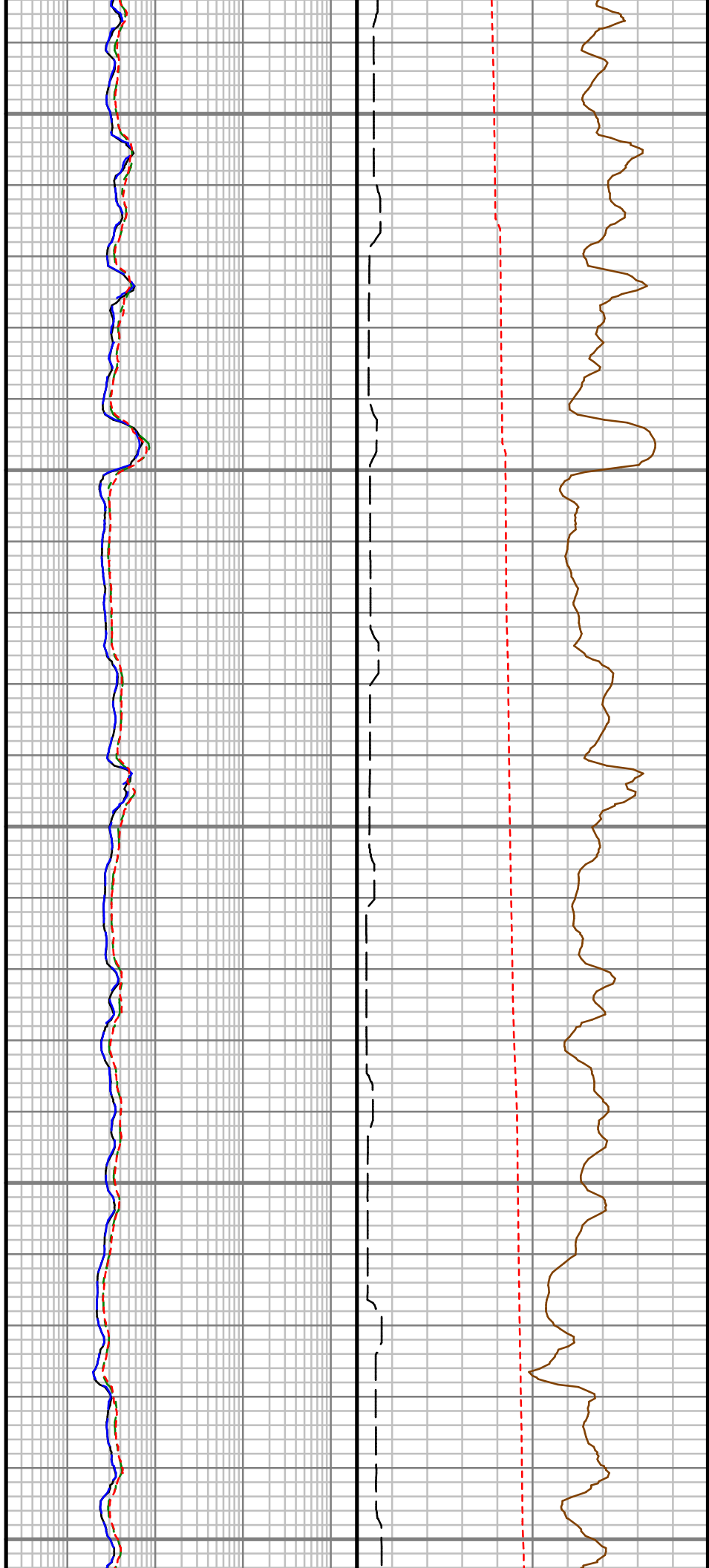
650

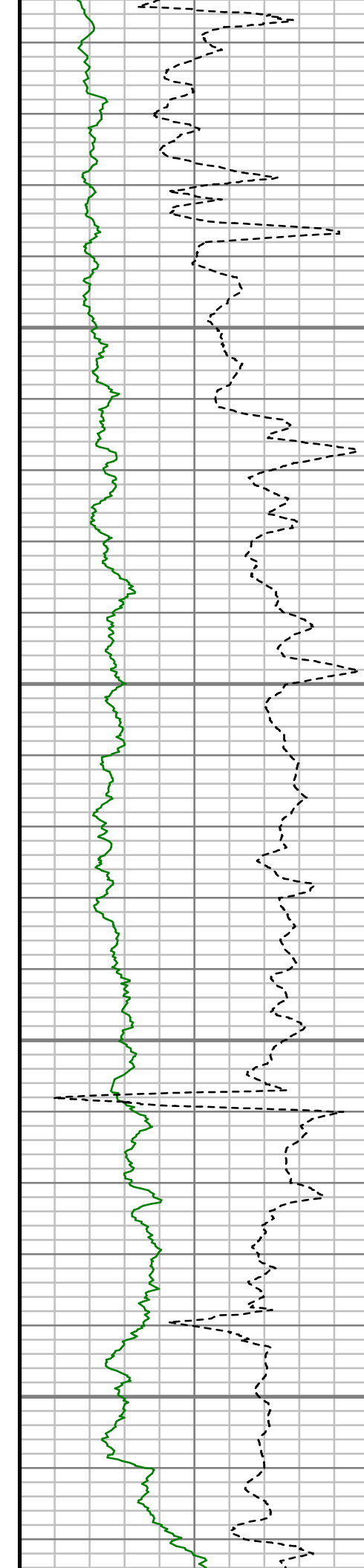
700

750

800

850



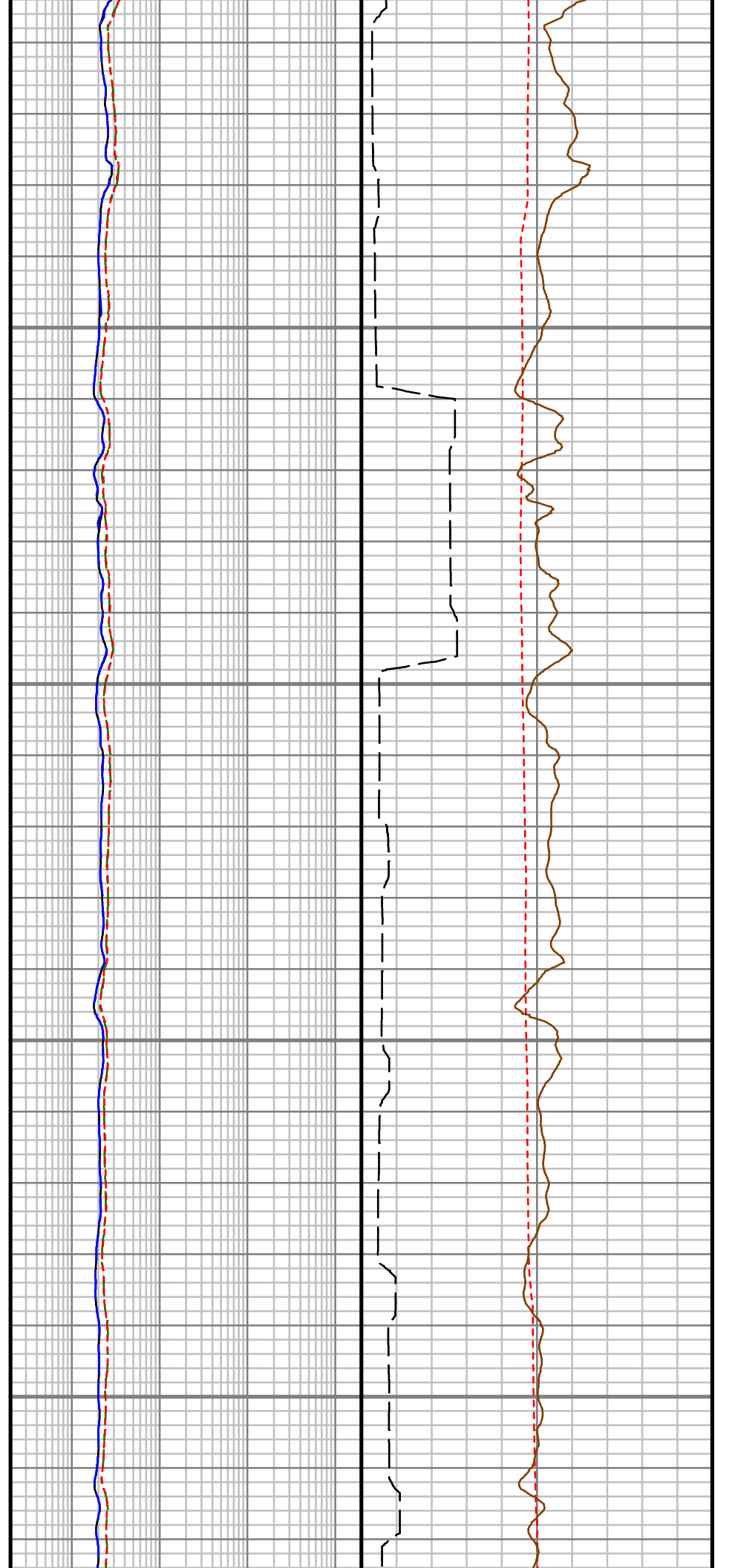


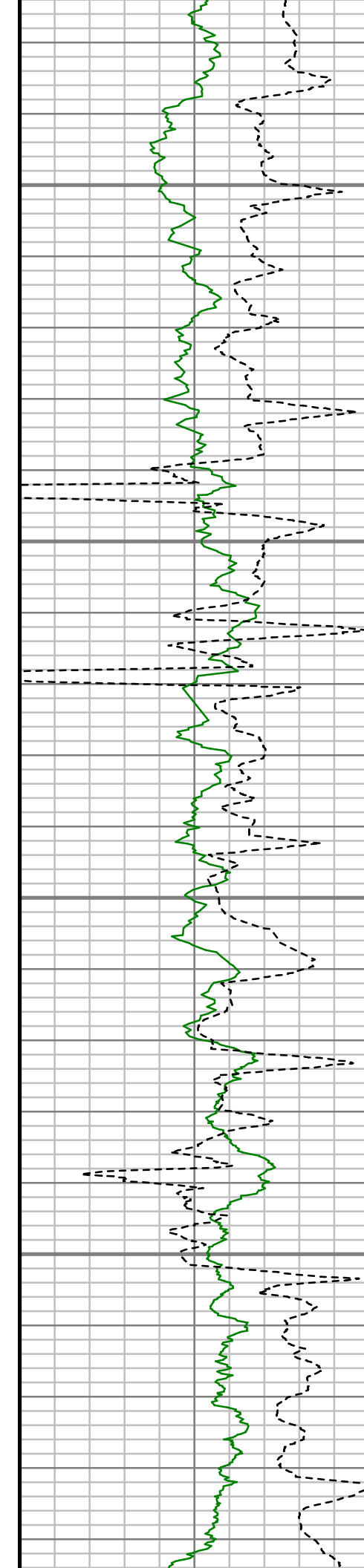
900

950

1000

1050



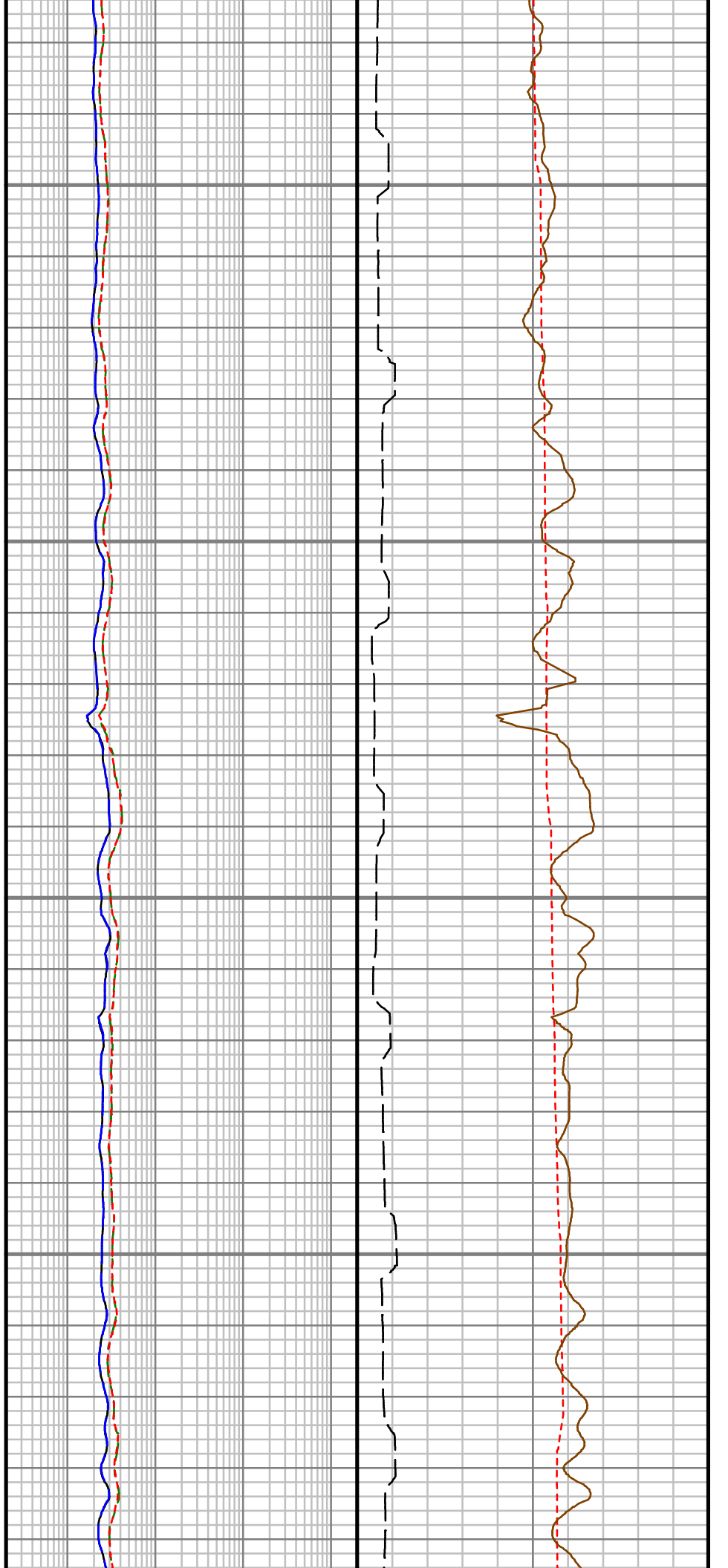


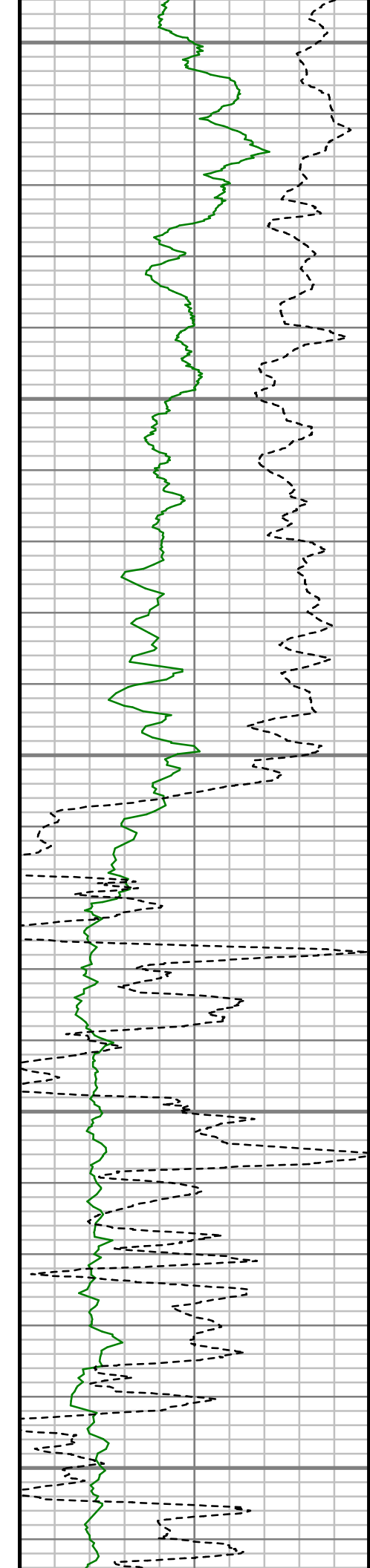
1100

1150

1200

1250





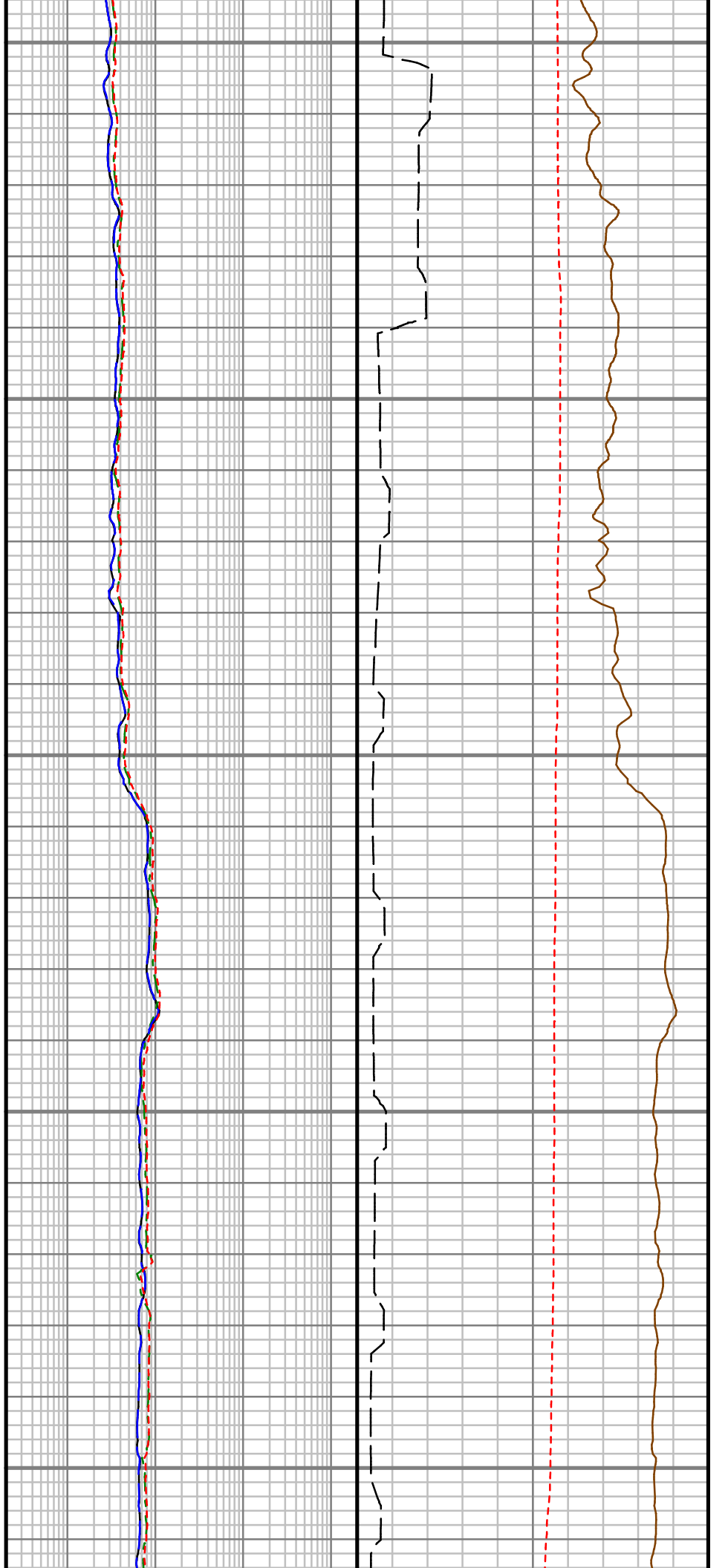
1300

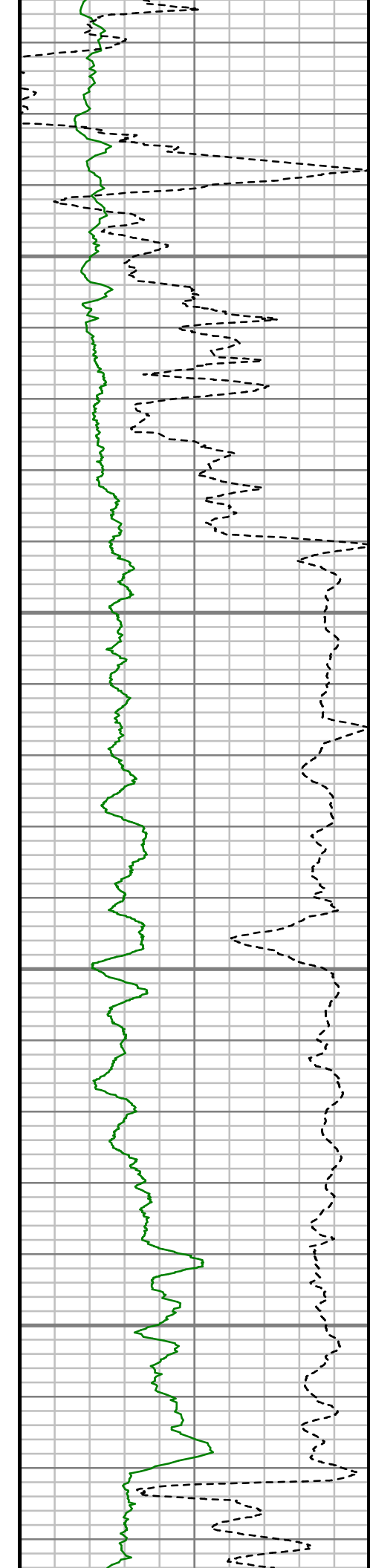
1350

1400

1450

1500



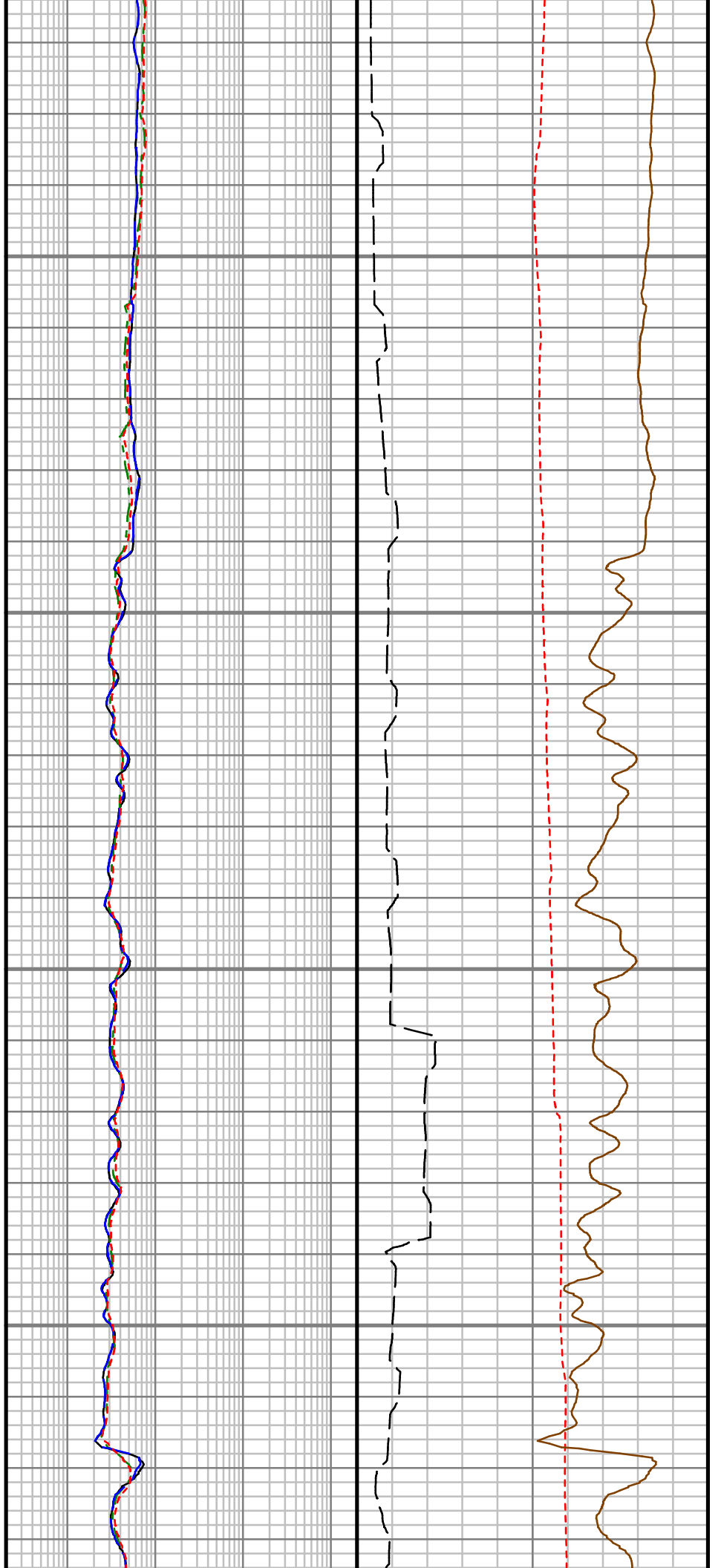


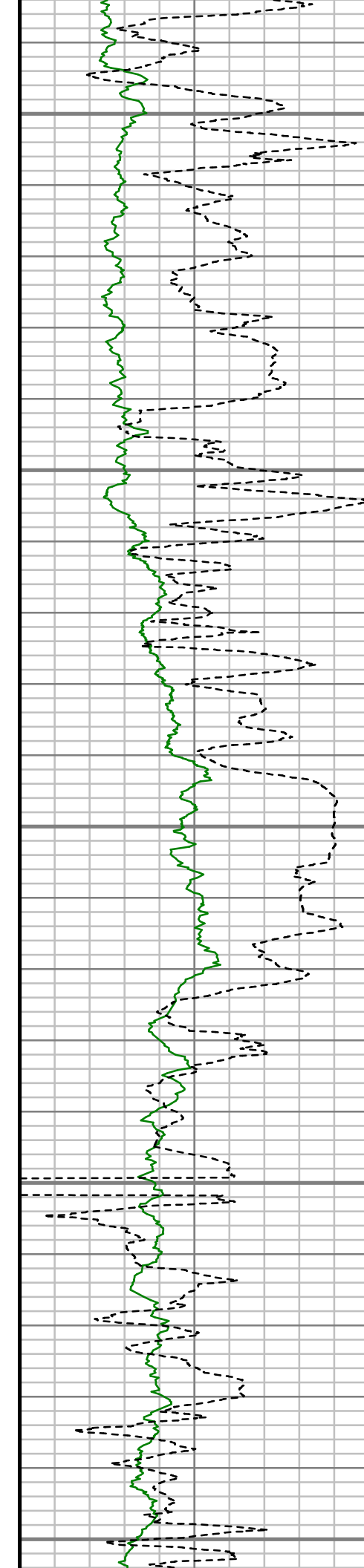
1550

1600

1650

1700





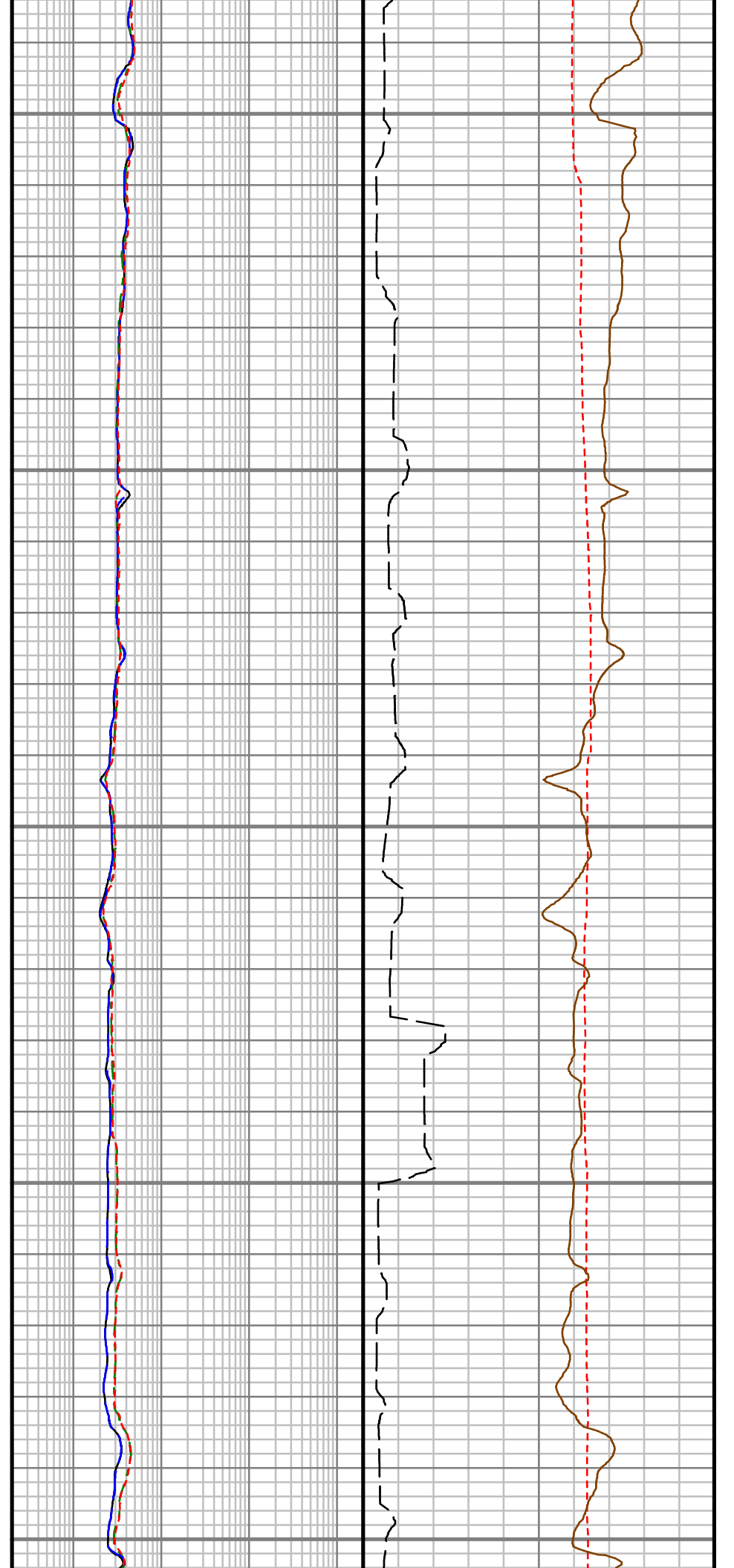
1750

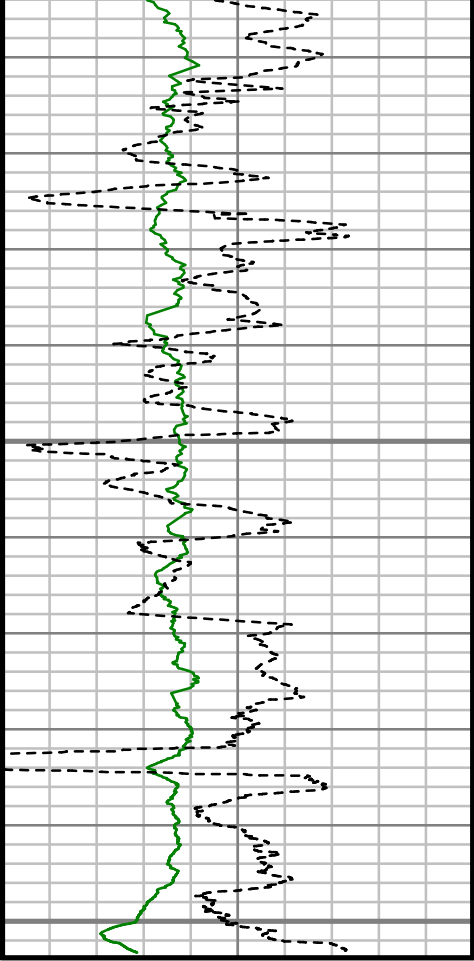
1800

1850

1900

1950



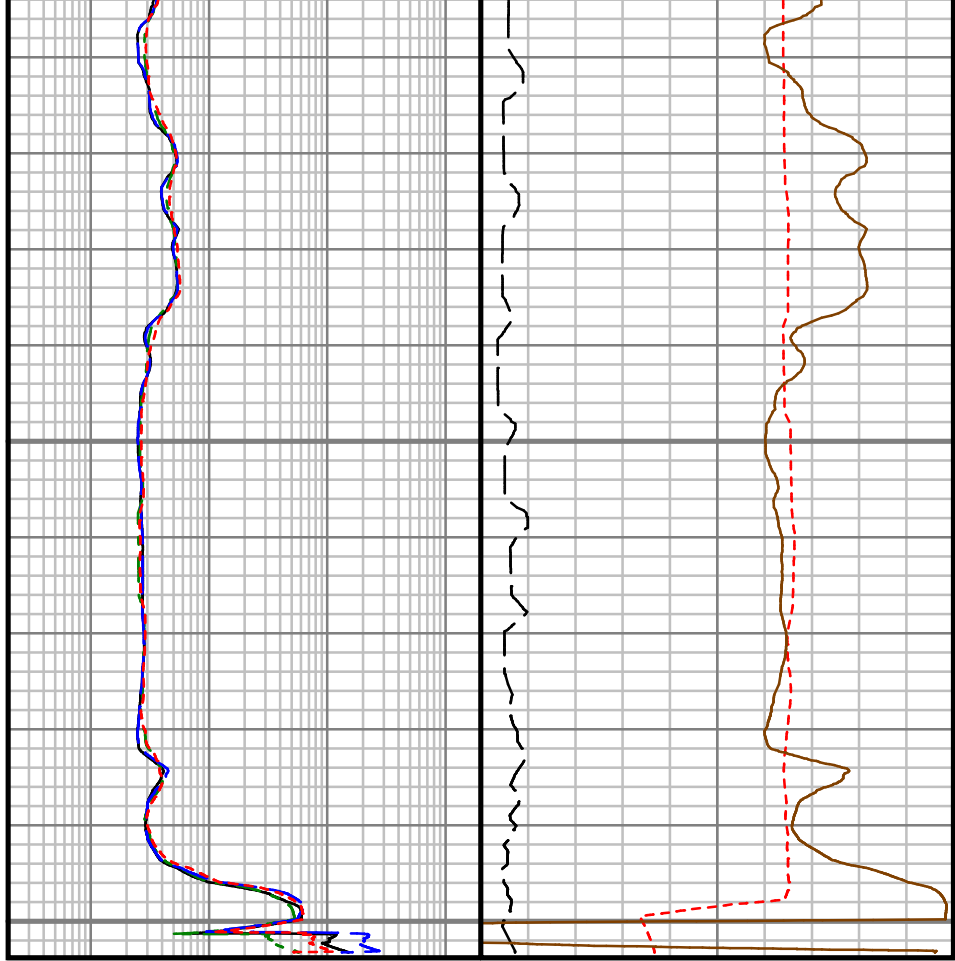


Rate of Penetration (ROP)		
500	Unit = ft/hr	0
GAIN - Gamma Ray (G-GR)		
0	Unit = aapi	150

2000

2050

TRUE VERTICAL DEPTH
1:240 (ft)



Attenuation Resistivity, 33" (AR33)		
0.2	Unit = ohmm	2000
Phase Shift Resistivity, 33" (PR33)		
0.2	Unit = ohmm	2000
Attenuation Resistivity, 23" (AR23)		
0.2	Unit = ohmm	2000
Phase Shift Resistivity, 23" (PR23)		
0.2	Unit = ohmm	2000

Phase Shift Conductivity, 33" (PC33)		
1000	Unit = mmho/m	0
Tool Temperature (T-TEMP)		
50	Unit = °F	150
FET of Resistivity (FETR)		
0	Unit = hr	10

Customer Name:	TRIO PETROLRUM LLC
Site Name:	SECTION 23
Well Name:	HH-4
Survey:	HH-4
Survey Date:	11/22/2013
Magnetic Declination:	13.28 deg
Grid Correction:	1.11 deg
North Reference:	Grid North
Calculation Method:	Minimum Curvature
Section (VS) Ref:	0.00N (ft), 0.00E (ft), 341.22Azim (deg)

MD ft	Inc deg	Azim deg	TVD ft	VS ft	+N/-S ft	+E/-W ft	DLS 7100ft
0.00	0.00	0.00	0.00	0.00	0.00	0.00	Invalid
104.00	0.27	206.99	104.00	-0.17	-0.22	-0.11	0.26
229.00	0.17	308.01	229.00	-0.22	-0.37	-0.39	0.28
322.00	0.35	295.93	322.00	0.09	-0.16	-0.75	0.20
416.00	0.10	288.20	416.00	0.34	-0.01	-1.08	0.26
509.00	0.64	221.70	509.00	0.13	-0.38	-1.51	0.65
602.00	0.73	277.09	601.99	0.13	-0.69	-2.44	0.69
696.00	0.24	13.00	695.99	0.57	-0.42	-2.99	0.85

MD ft	Inc deg	Azim deg	TVD ft	VS ft	+N/-S ft	+E/-W ft	DLS 7100ft
789.00	0.27	28.08	788.99	0.88	-0.03	-2.85	0.08
881.00	0.50	108.29	880.98	0.79	0.03	-2.36	0.57
974.00	0.34	77.37	973.98	0.52	-0.04	-1.71	0.29
1034.00	1.14	273.09	1033.98	0.72	0.04	-2.13	2.46
1064.00	2.19	277.28	1063.97	1.08	0.12	-3.00	3.50
1094.00	4.10	277.11	1093.92	1.80	0.33	-4.63	6.36
1125.00	6.02	285.03	1124.80	3.19	0.89	-7.30	6.60
1154.00	7.70	289.44	1153.59	5.24	1.93	-10.60	6.07
1184.00	8.19	290.76	1183.30	7.84	3.36	-14.49	1.74
1215.00	8.76	290.02	1213.96	10.73	4.95	-18.78	1.86
1246.00	10.03	288.64	1244.55	13.85	6.62	-23.55	4.17
1276.00	10.99	286.67	1274.04	17.09	8.27	-28.77	3.42
1307.00	12.16	284.13	1304.41	20.58	9.92	-34.76	4.10
1337.00	14.01	282.02	1333.63	24.16	11.45	-41.38	6.37
1368.00	16.44	280.54	1363.54	28.23	13.03	-49.36	7.95
1399.00	19.02	281.57	1393.07	32.93	14.84	-58.62	8.38
1429.00	21.23	282.53	1421.23	38.22	17.00	-68.72	7.45
1460.00	22.94	283.63	1449.96	44.37	19.64	-80.07	5.68
1490.00	24.23	282.50	1477.45	50.70	22.35	-91.76	4.57
1521.00	26.52	282.93	1505.46	57.65	25.28	-104.72	7.42

MD ft	Inc deg	Azim deg	TVD ft	VS ft	+N/-S ft	+E/-W ft	DLS 7100ft
1552.00	29.46	283.34	1532.83	65.34	28.59	-118.88	9.50
1582.00	31.40	284.92	1558.70	73.60	32.30	-133.62	6.99
1613.00	32.58	285.14	1584.99	82.74	36.56	-149.48	3.81
1643.00	34.73	286.15	1609.96	92.14	41.05	-165.48	7.43
1673.00	36.34	289.16	1634.37	102.50	46.35	-182.09	7.91
1704.00	37.23	293.70	1659.21	114.48	53.13	-199.35	9.23
1735.00	38.71	299.03	1683.65	128.00	61.61	-216.42	11.59
1765.00	39.98	303.24	1706.85	142.55	71.45	-232.69	9.86
1796.00	41.59	306.29	1730.33	158.84	83.00	-249.32	8.26
1828.00	43.78	308.56	1753.85	176.87	96.19	-266.54	8.37
1859.00	45.05	309.87	1775.99	195.27	109.90	-283.34	5.03
1890.00	46.36	311.98	1797.64	214.43	124.44	-300.11	6.46
1921.00	47.04	314.02	1818.90	234.31	139.83	-316.60	5.28
1952.00	48.54	316.62	1839.73	254.96	156.16	-332.74	7.86
1983.00	50.61	319.29	1859.83	276.64	173.68	-348.53	9.36
2015.00	53.26	322.01	1879.56	300.23	193.16	-364.50	10.64
2046.00	54.58	324.75	1897.82	324.07	213.27	-379.44	8.32
2077.00	56.57	326.79	1915.35	348.72	234.41	-393.81	8.39
2108.00	59.20	328.52	1931.83	374.24	256.59	-407.85	9.73

MD ft	Inc deg	Azim deg	TVD ft	VS ft	+N/-S ft	+E/-W ft	DLS 7100ft
2139.00	61.76	330.24	1947.10	400.64	279.81	-421.59	9.57
2170.00	64.16	332.75	1961.20	427.85	304.07	-434.76	10.58
2201.00	65.67	333.62	1974.34	455.65	329.13	-447.42	5.49
2233.00	67.79	335.32	1986.98	484.84	355.65	-460.09	8.25
2264.00	69.51	336.82	1998.27	513.59	382.04	-471.79	7.14
2295.00	71.15	339.07	2008.70	542.73	409.10	-482.75	8.64
2326.00	73.44	341.37	2018.13	572.26	436.88	-492.74	10.22
2357.00	76.72	343.55	2026.11	602.20	465.44	-501.76	12.57
2388.00	79.97	345.34	2032.37	632.50	494.68	-509.90	11.91
2419.00	82.60	346.83	2037.07	663.03	524.42	-517.27	9.71
2450.00	84.63	347.98	2040.52	693.66	554.49	-523.99	7.53
2481.00	85.29	349.52	2043.24	724.27	584.77	-530.01	5.38
2512.00	85.32	350.74	2045.78	754.79	615.21	-535.30	3.92
2592.00	85.65	354.26	2052.08	832.99	694.27	-545.71	4.41
2623.00	90.13	355.67	2053.22	863.07	725.12	-548.42	15.16
2654.00	96.02	357.52	2051.56	892.91	756.01	-550.26	19.91



PROPAGATION RESISTIVITY
GAMMA RAY

5" = 100' FEET TVD