



5" = 100' FEET MD

COMPANY : TRIO PETROLRUM LLC  
WELL : HH-4 ST1  
FIELD : HANGMAN HOLLOW  
COUNTY : MONTEREY  
STATE : CALIFORNIA  
COUNTRY : US  
UWI :

COMPANY : TRIO PETROLRUM LLC  
WELL : HH-4 ST1  
FIELD : HANGMAN HOLLOW  
COUNTY : MONTEREY  
STATE : CALIFORNIA  
COUNTRY : US  
UWI :

WELL LOCATION  
LAT: 35°59'39.974"N LONG: 120°51'41.634"W  
N: 1886431.79 Ft E: 6011000.61 Ft  
SEC: 23 TWP: 22S RANGE: 10E

OTHER SERVICES

DIRECTIONAL

ROP

CONDUCTIVITY

FEET

DEPTH REF. : RKB  
REF. HEIGHT : 10.000 Ft  
GROUND LEVEL : 717.930 Ft  
RKB to Ground Level  
G.L. to MEAN SEA LEVEL

BOREHOLE RECORD

DEVIATION RECORD

HOLE SIZE in	FROM Ft	TO Ft	INCLINATION deg	FROM Ft	TO Ft
11	0	2611	0-1	0	1000
7 7/8	2611	3812	1-96 (+/-1)	1000	2716
			96-92 (+/-5)	2716	3812
CASING RECORD					
CASING SIZE in	FROM Ft	TO Ft			
8 5/8	0	2592			

DRILLING CO. : ENSIGN  
RIG : 509

LWD UNIT NO. : LWD 6 DISTRICT : BAKERSFIELD  
SPUD DATE : 11-22-2013  
LWD START DATE : 11-22-2013 DEPTH : 261 Ft  
LWD END DATE : 11/27/13 DEPTH : 3812 Ft

TOTAL DEPTH : 3812 Ft

Run Data

RUN NUMBER	1	2	3		
START DATE	11/22/13	11/25/13	11/26/13		
START TIME	05:00	17:00	06:00		
END DATE	11/24/13	11/26/13	11/27/13		
END TIME	08:00	06:00	03:00		
DEPTH IN (ft)	261	2611	2635		
DEPTH OUT (ft)	2611	2635	3812		
LOG TOP (ft)	265	2611	2635		
LOG BOTTOM (ft)	2611	2611	3812		
HOLE SIZE (in)	11	7 7/8	7 7/8		
MUD DATA @ (ft)	1538	2630	2630		
MUD TYPE	LSND	GEOZAN	GEOZAN		
DENSITY (lb / gal)	9.0	8.5	8.5		
VISCOSITY (s / qt)	47	38	38		
pH	8	8.5	8.5		
FLUID LOSS (cm3 / 30)	5.7	15.3	15.3		
SALINITY (ppm)	550	17200	17200		
Rm (ohmm @ deg F)	-	-	-		
Rmf (ohmm @ deg F)	-	-	-		
MAX TEMP (deg F)	113	103	119		
Rm @ MAX TEMP (ohmm)	-	-	-		
LWD ENGINEER #1	J. BIHM	J. BIHM	J. BIHM		
LWD ENGINEER #2	L. CLEVINGER	L. CLEVINGER	L. CLEVINGER		
LWD ENGINEER #3	N. LUTU	N. LUTU	N. LUTU		
LOG WITNESS #1	-	-	-		
LOG WITNESS #2	-	-	-		



All interpretations are opinions based on inferences from electrical or other measurements and do not guarantee the accuracy or correctness of any interpretations, and we shall not, except in the case of gross or willful negligence on our part, be liable or responsible for any loss, costs, damages or expenses incurred or sustained by anyone resulting from any interpretation made by any of our officers, agents or employees. These interpretations are also subject to our general terms and conditions as set out in our current price schedule.

FINAL COPY

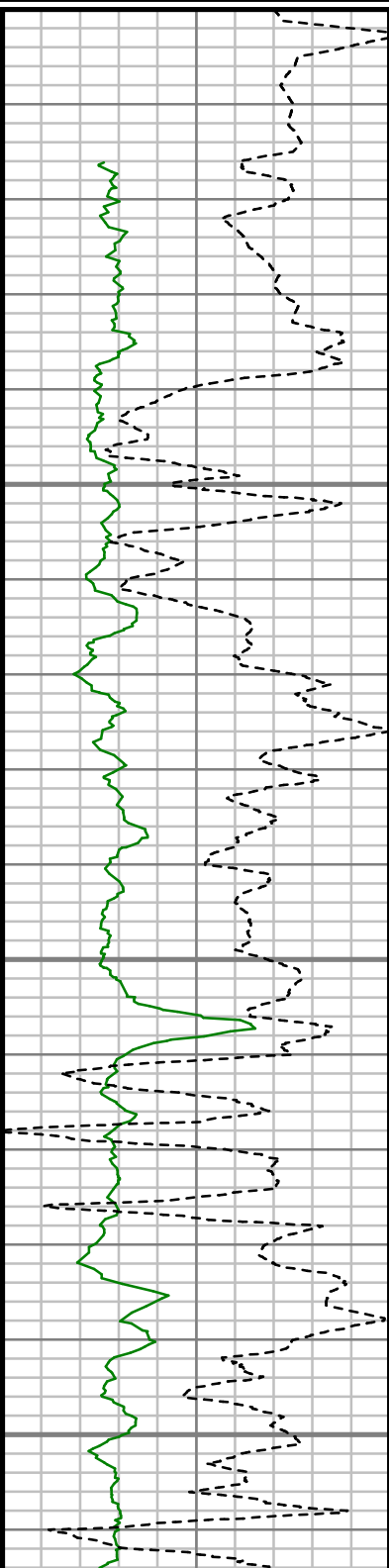
GAIN - Gamma Ray (G-GR)		
0	Unit = aapi	150
Rate of Penetration (ROP)		
500	Unit = ft/hr	0

MEASURED DEPTH  
1:240 (ft)

Phase Shift Resistivity, 23" (PR23)		
0.2	Unit = ohmm	2000
Attenuation Resistivity, 23" (AR23)		
0.2	Unit = ohmm	2000
Phase Shift Resistivity, 33" (PR33)		
0.2	Unit = ohmm	2000
Attenuation Resistivity, 33" (AR33)		
0.2	Unit = ohmm	2000

FET of Resistivity (FETR)		
0	Unit = hr	10
Tool Temperature (T-TEMP)		
50	Unit = °F	150
Phase Shift Conductivity, 33" (PC33)		
1000	Unit = mmho/m	0

Comments

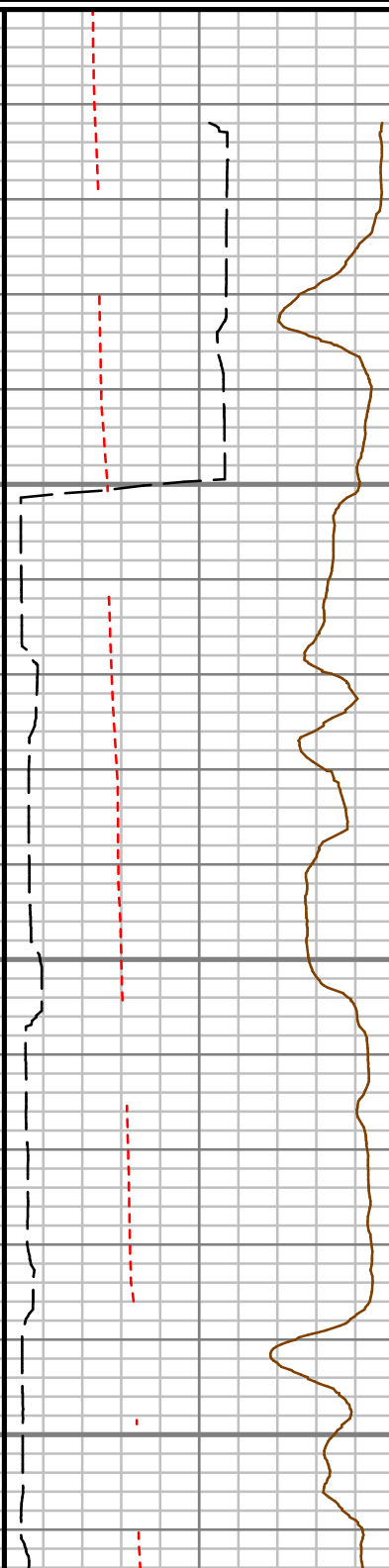
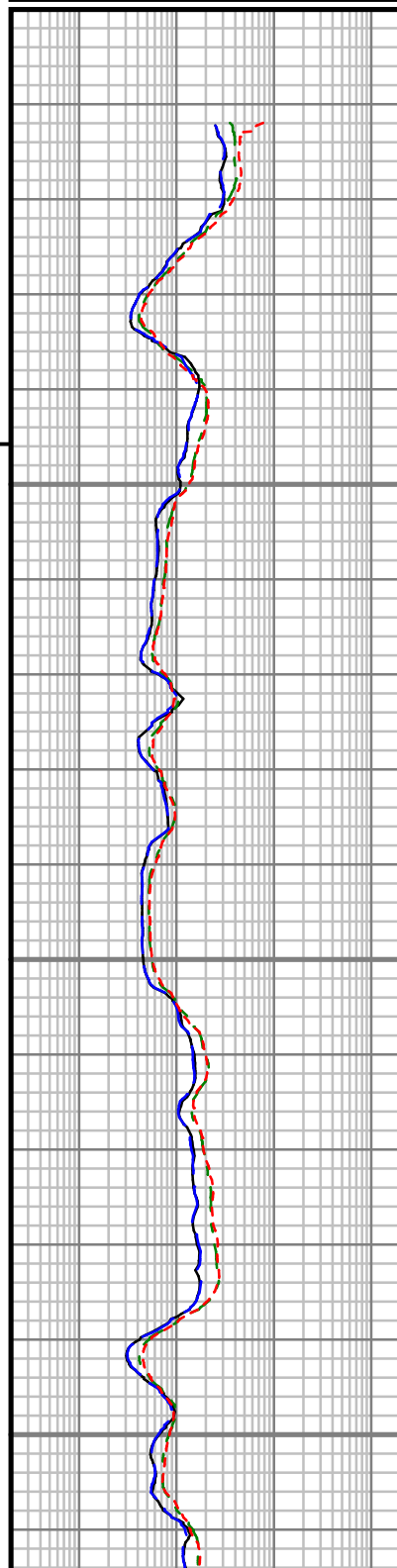


RUN #1 300'

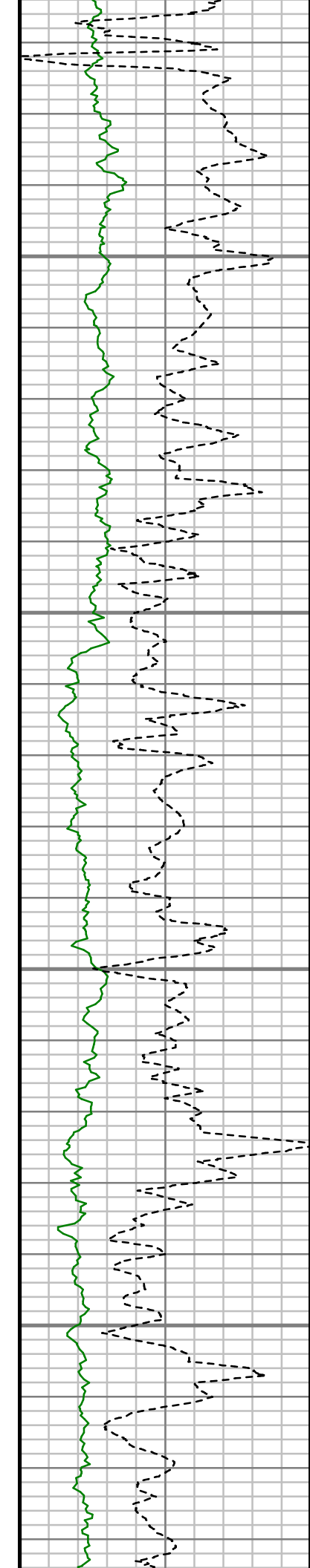
300

350

400



S: 3 MD: 322.00 ft Inc:  
0.35 deg Az: 295.93  
deg TVD: 322.00 ft

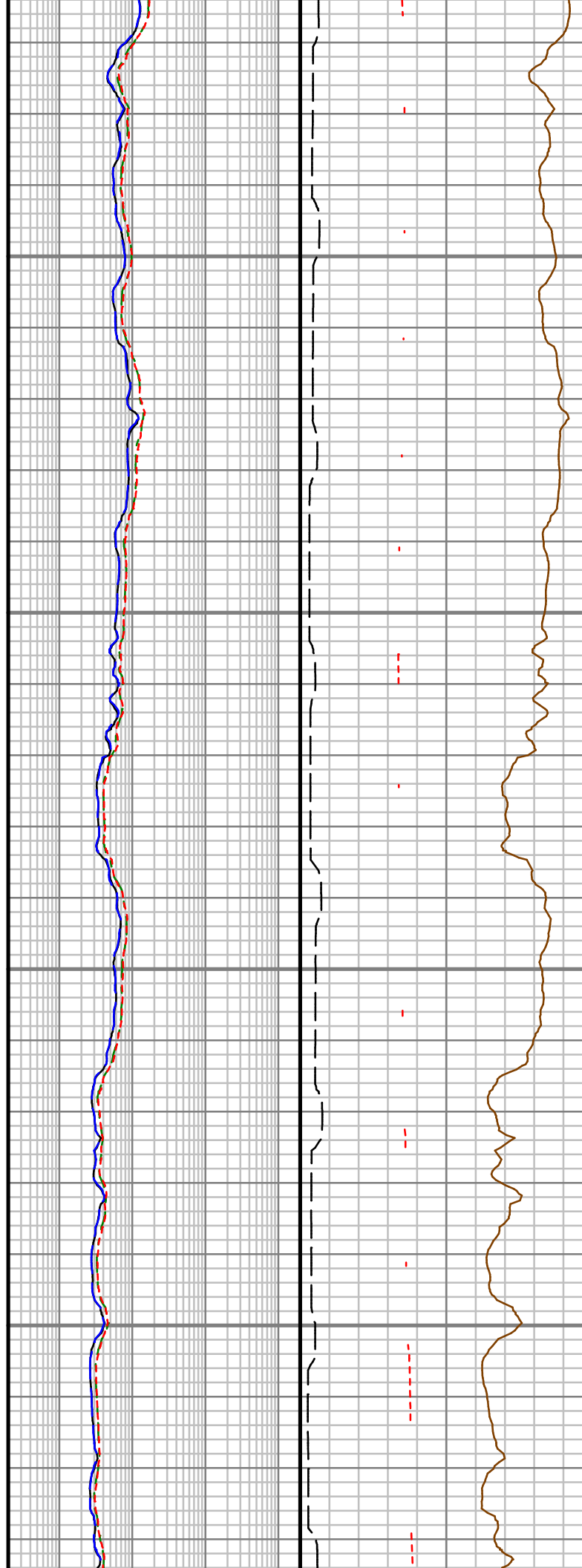


450

500

550

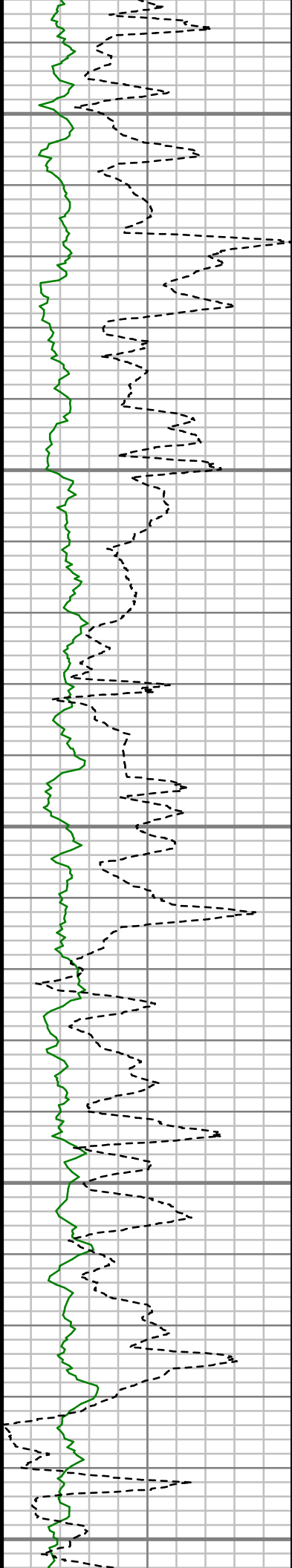
600



S: 4 MD: 416.00 ft Inc:  
0.10 deg Az: 288.20  
deg TVD: 416.00 ft

S: 5 MD: 509.00 ft Inc:  
0.64 deg Az: 221.70  
deg TVD: 509.00 ft

S: 6 MD: 602.00 ft Inc:  
0.73 deg Az: 277.09  
deg TVD: 601.99 ft



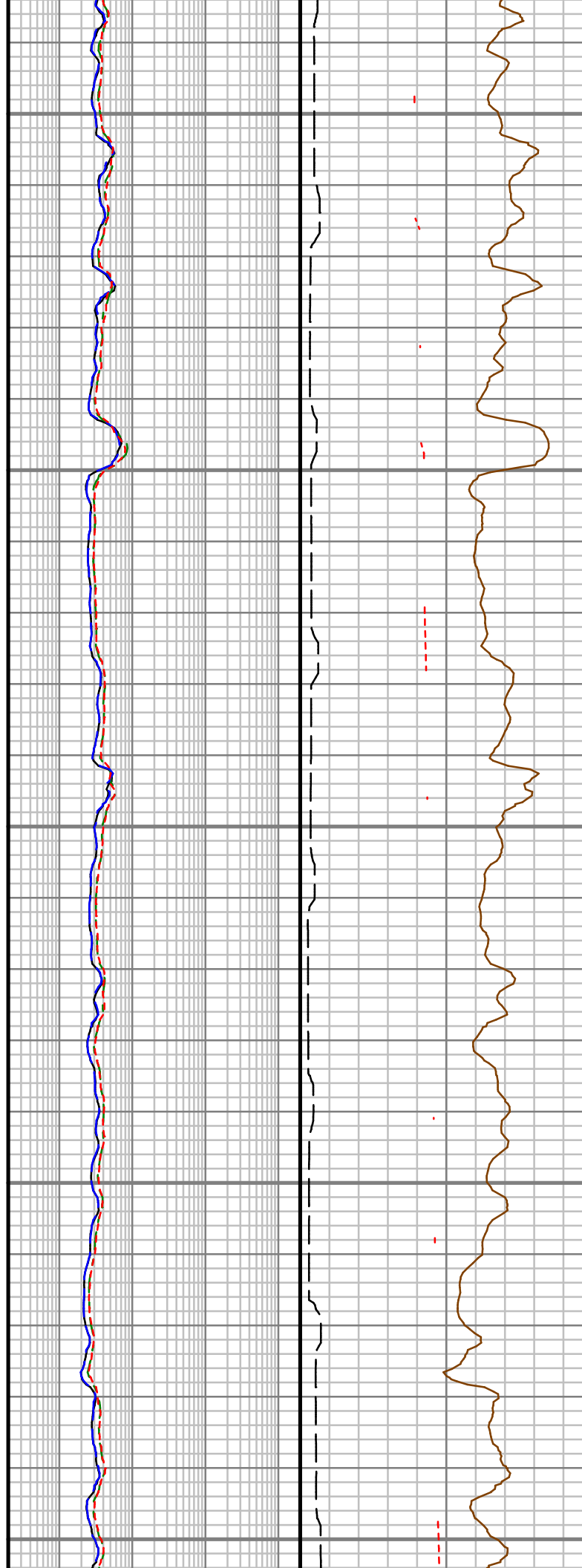
650

700

750

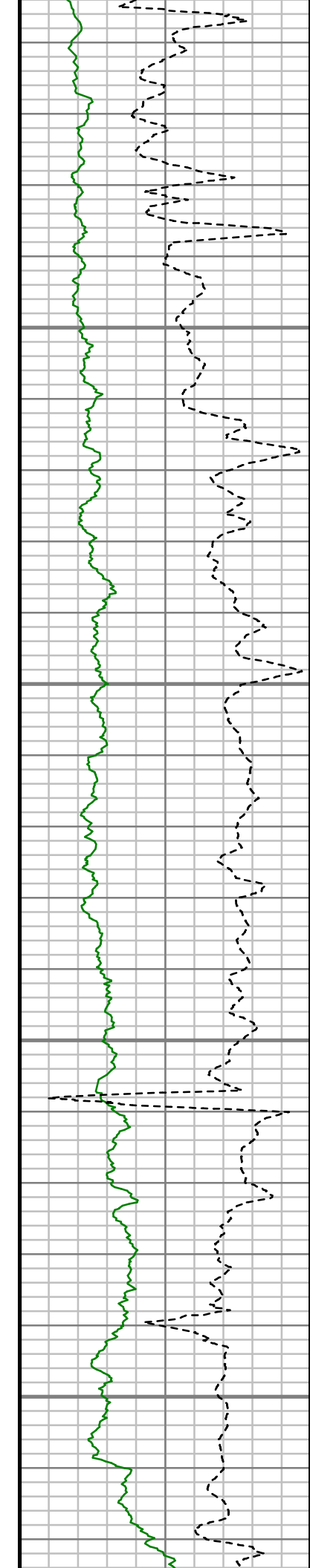
800

850



S: 7 MD: 696.00 ft Inc:  
0.24 deg Az: 13.00 deg  
TVD: 695.99 ft

S: 8 MD: 789.00 ft Inc:  
0.27 deg Az: 28.08 deg  
TVD: 788.99 ft

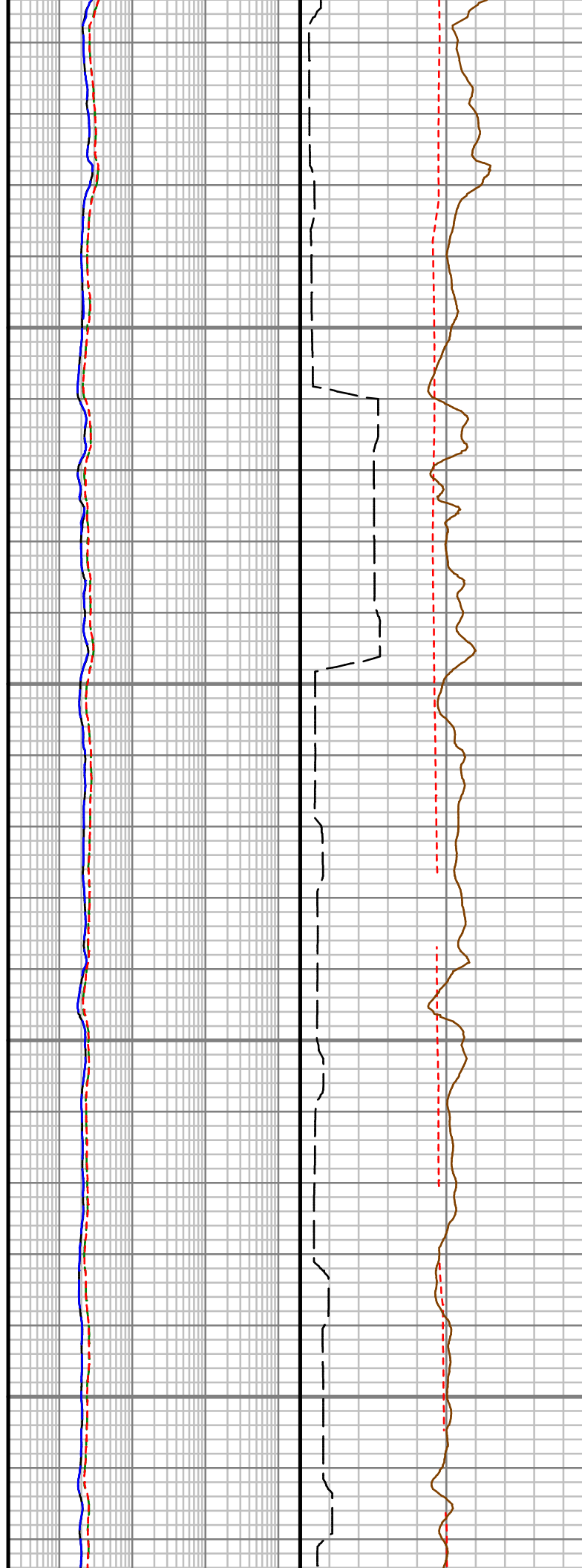


900

950

1000

1050

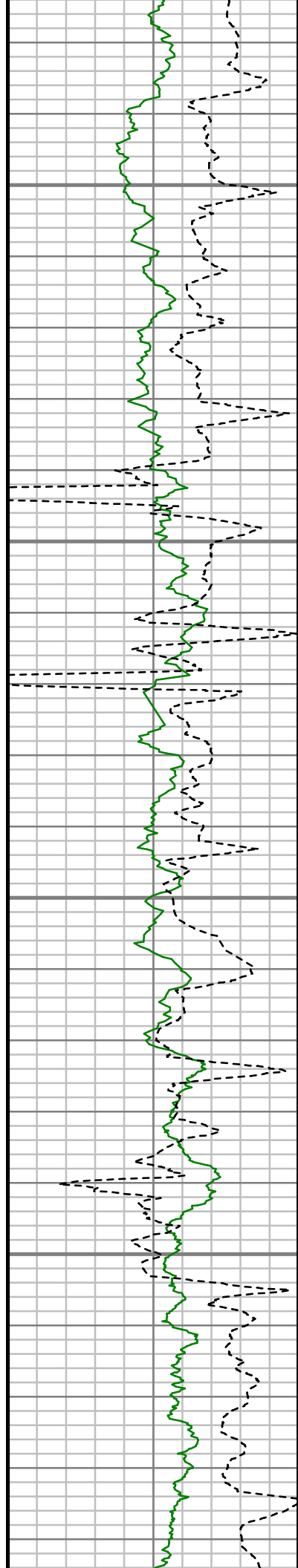


S: 9 MD: 881.00 ft Inc:  
0.50 deg Az: 108.29  
deg TVD: 880.98 ft

S: 10 MD: 974.00 ft  
Inc: 0.34 deg Az: 77.37  
deg TVD: 973.98 ft

S: 11 MD: 1034.00 ft  
Inc: 1.14 deg Az:  
273.09 deg TVD:  
1033.98 ft

S: 12 MD: 1064.00 ft  
Inc: 2.19 deg Az:  
277.28 deg TVD:  
1063.97 ft

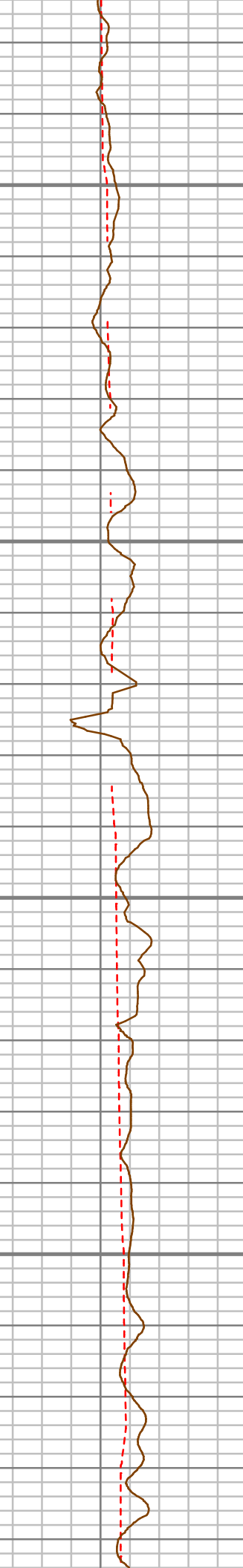
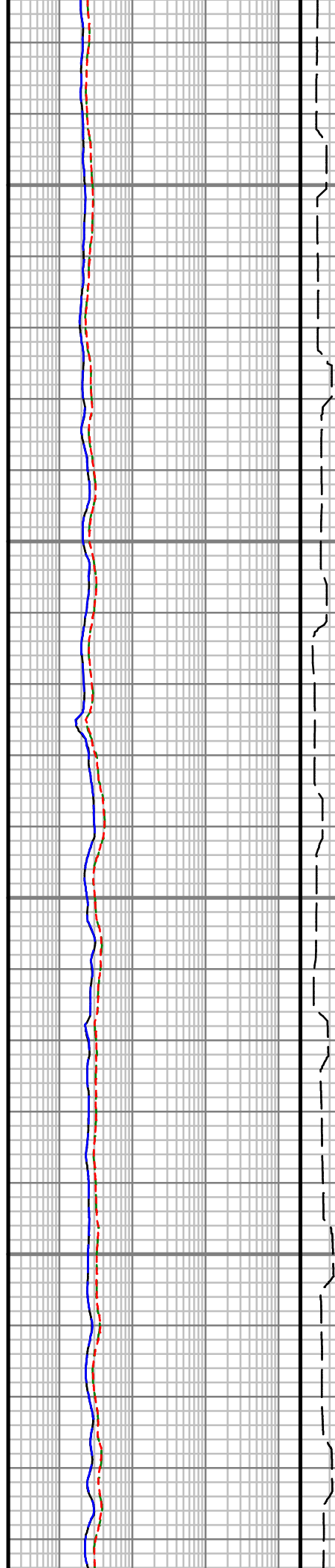


1100

1150

1200

1250



S: 13 MD: 1094.00 ft  
Inc: 4.10 deg Az:  
277.11 deg TVD:  
1093.92 ft

S: 14 MD: 1125.00 ft  
Inc: 6.02 deg Az:  
285.03 deg TVD:  
1124.80 ft

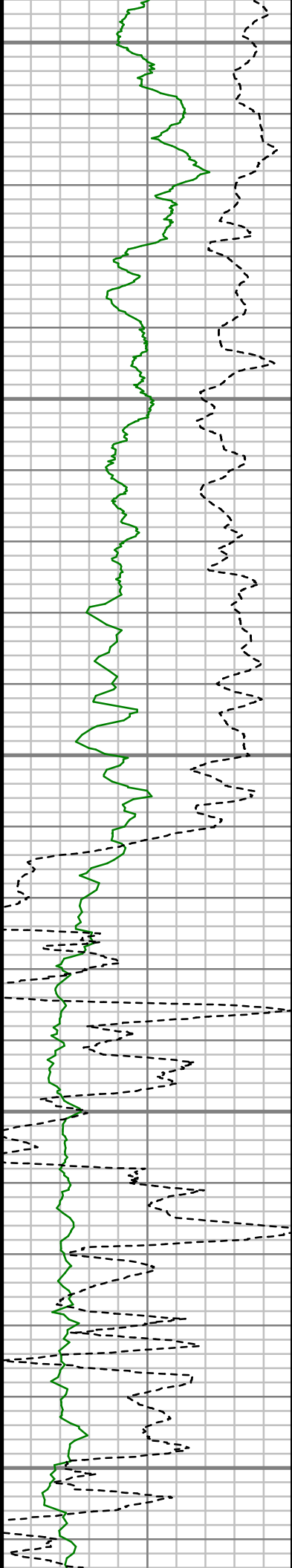
S: 15 MD: 1154.00 ft  
Inc: 7.70 deg Az:  
289.44 deg TVD:  
1153.59 ft

S: 16 MD: 1184.00 ft  
Inc: 8.19 deg Az:  
290.76 deg TVD:  
1183.30 ft

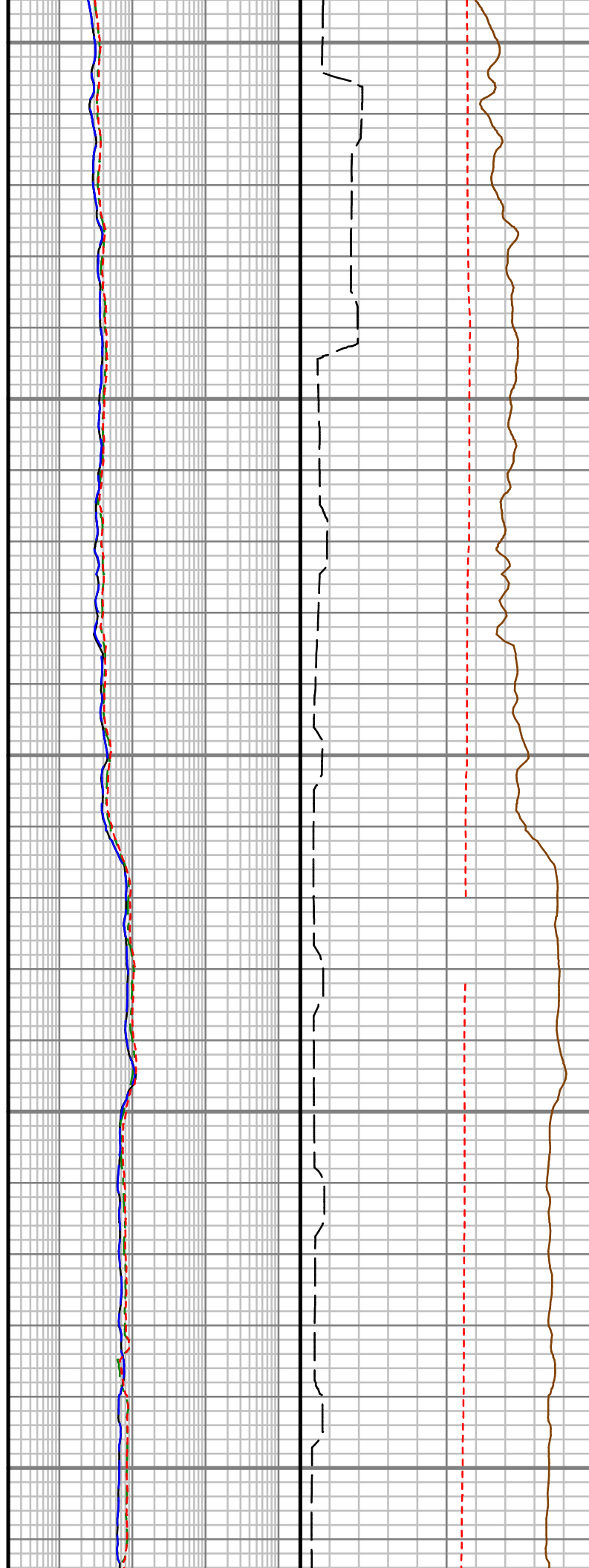
S: 17 MD: 1215.00 ft  
Inc: 8.76 deg Az:  
290.02 deg TVD:  
1213.96 ft

S: 18 MD: 1246.00 ft  
Inc: 10.03 deg Az:  
288.64 deg TVD:  
1244.55 ft

S: 19 MD: 1276.00 ft  
Inc: 10.99 deg Az:  
286.67 deg TVD:  
1274.04 ft



1300  
1350  
1400  
1450  
1500



S: 20 MD: 1307.00 ft  
Inc: 12.16 deg Az:  
284.13 deg TVD:  
1304.41 ft

S: 21 MD: 1337.00 ft  
Inc: 14.01 deg Az:  
282.02 deg TVD:  
1333.63 ft

S: 22 MD: 1368.00 ft  
Inc: 16.44 deg Az:  
280.54 deg TVD:  
1363.54 ft

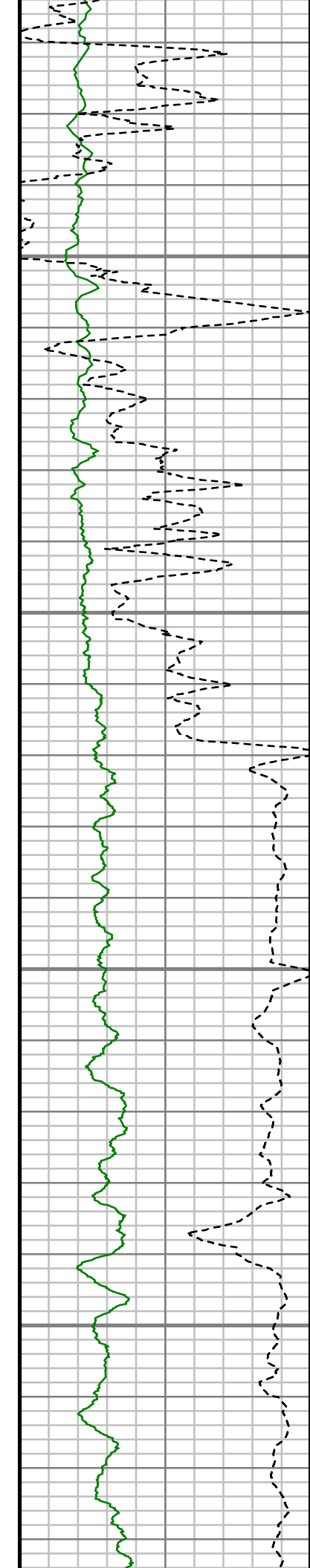
S: 23 MD: 1399.00 ft  
Inc: 19.02 deg Az:  
281.57 deg TVD:  
1393.07 ft

S: 24 MD: 1429.00 ft  
Inc: 21.23 deg Az:  
282.53 deg TVD:  
1421.23 ft

S: 25 MD: 1460.00 ft  
Inc: 22.94 deg Az:  
283.63 deg TVD:  
1449.96 ft

S: 26 MD: 1490.00 ft  
Inc: 24.23 deg Az:  
282.50 deg TVD:  
1477.45 ft





1550

1600

1650

1700

S: 27 MD: 1521.00 ft  
Inc: 26.52 deg Az:  
282.93 deg TVD:  
1505.46 ft

S: 28 MD: 1552.00 ft  
Inc: 29.46 deg Az:  
283.34 deg TVD:  
1532.83 ft

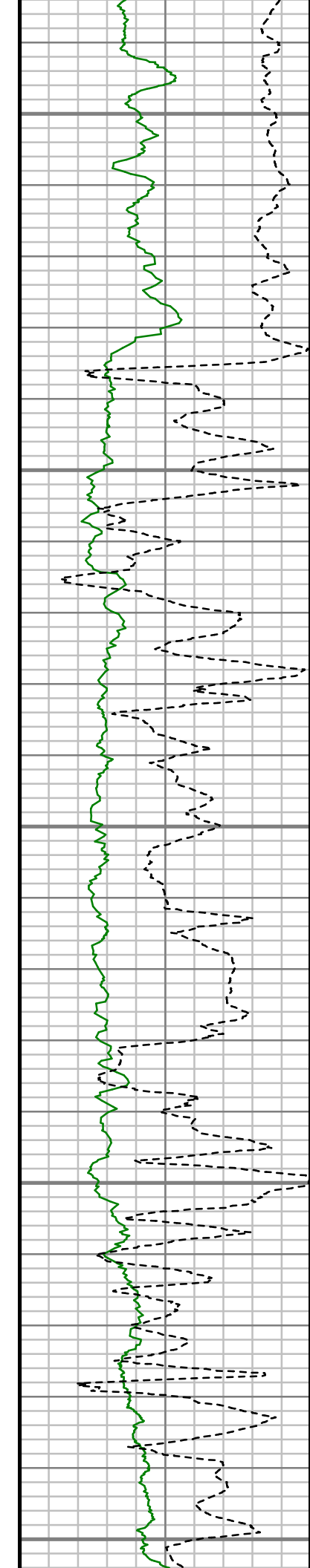
S: 29 MD: 1582.00 ft  
Inc: 31.40 deg Az:  
284.92 deg TVD:  
1558.70 ft

S: 30 MD: 1613.00 ft  
Inc: 32.58 deg Az:  
285.14 deg TVD:  
1584.99 ft

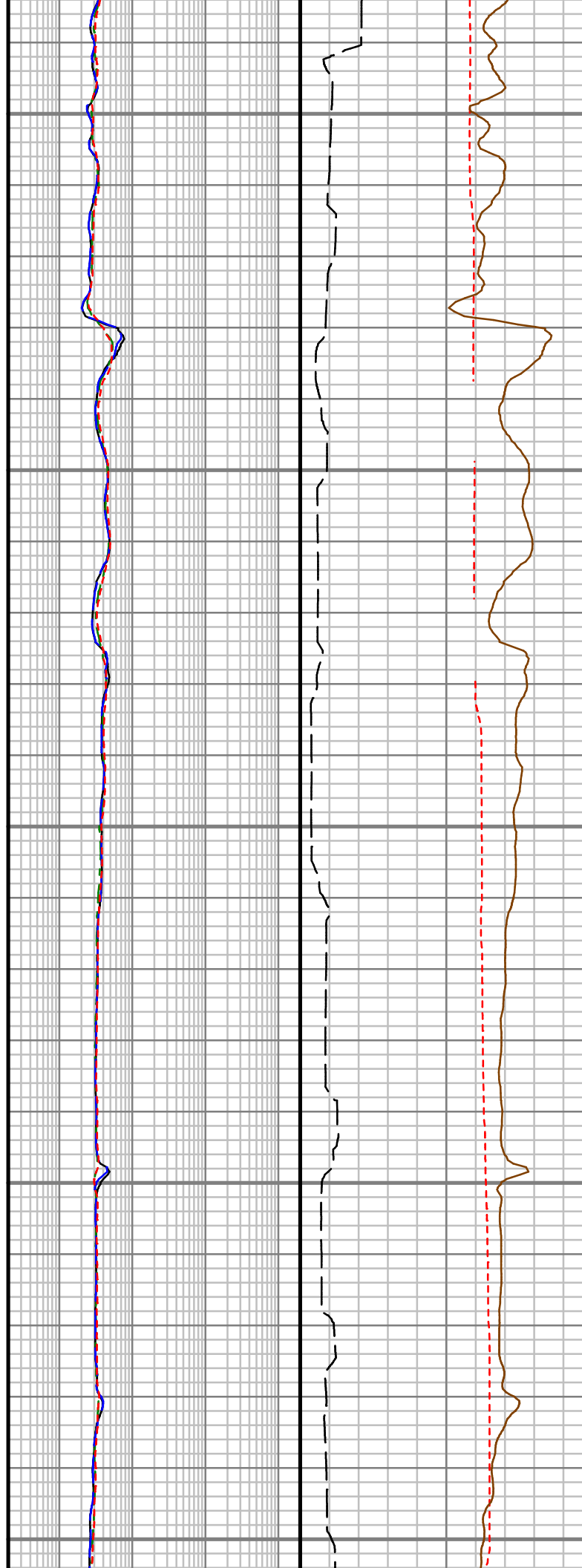
S: 31 MD: 1643.00 ft  
Inc: 34.73 deg Az:  
286.15 deg TVD:  
1609.96 ft

S: 32 MD: 1673.00 ft  
Inc: 36.34 deg Az:  
289.16 deg TVD:  
1634.37 ft

S: 33 MD: 1704.00 ft  
Inc: 37.23 deg Az:  
293.70 deg TVD:  
1659.21 ft



1750  
1800  
1850  
1900  
1950



S: 34 MD: 1735.00 ft  
Inc: 38.71 deg Az:  
299.03 deg TVD:  
1683.65 ft

S: 35 MD: 1765.00 ft  
Inc: 39.98 deg Az:  
303.24 deg TVD:  
1706.85 ft

S: 36 MD: 1796.00 ft  
Inc: 41.59 deg Az:  
306.29 deg TVD:  
1730.33 ft

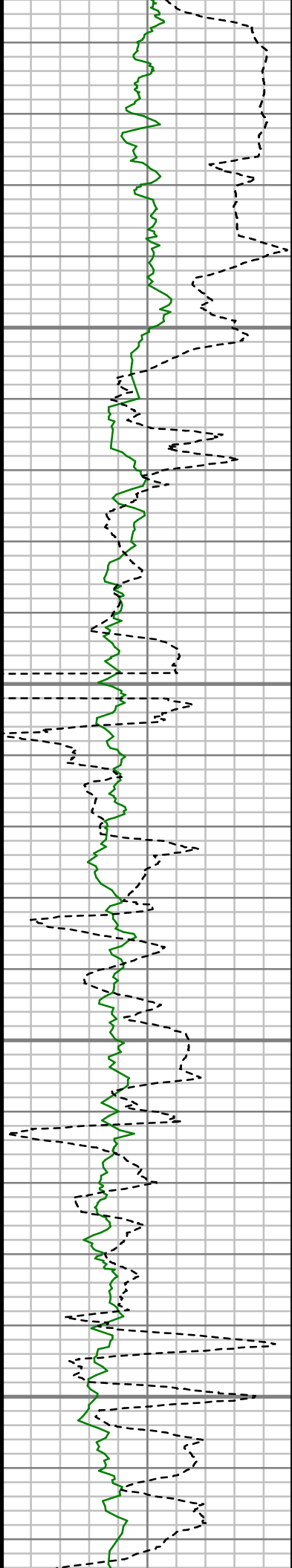
S: 37 MD: 1828.00 ft  
Inc: 43.78 deg Az:  
308.56 deg TVD:  
1753.85 ft

S: 38 MD: 1859.00 ft  
Inc: 45.05 deg Az:  
309.87 deg TVD:  
1775.99 ft

S: 39 MD: 1890.00 ft  
Inc: 46.36 deg Az:  
311.98 deg TVD:  
1797.64 ft

S: 40 MD: 1921.00 ft  
Inc: 47.04 deg Az:  
314.02 deg TVD:  
1818.90 ft

S: 41 MD: 1952.00 ft

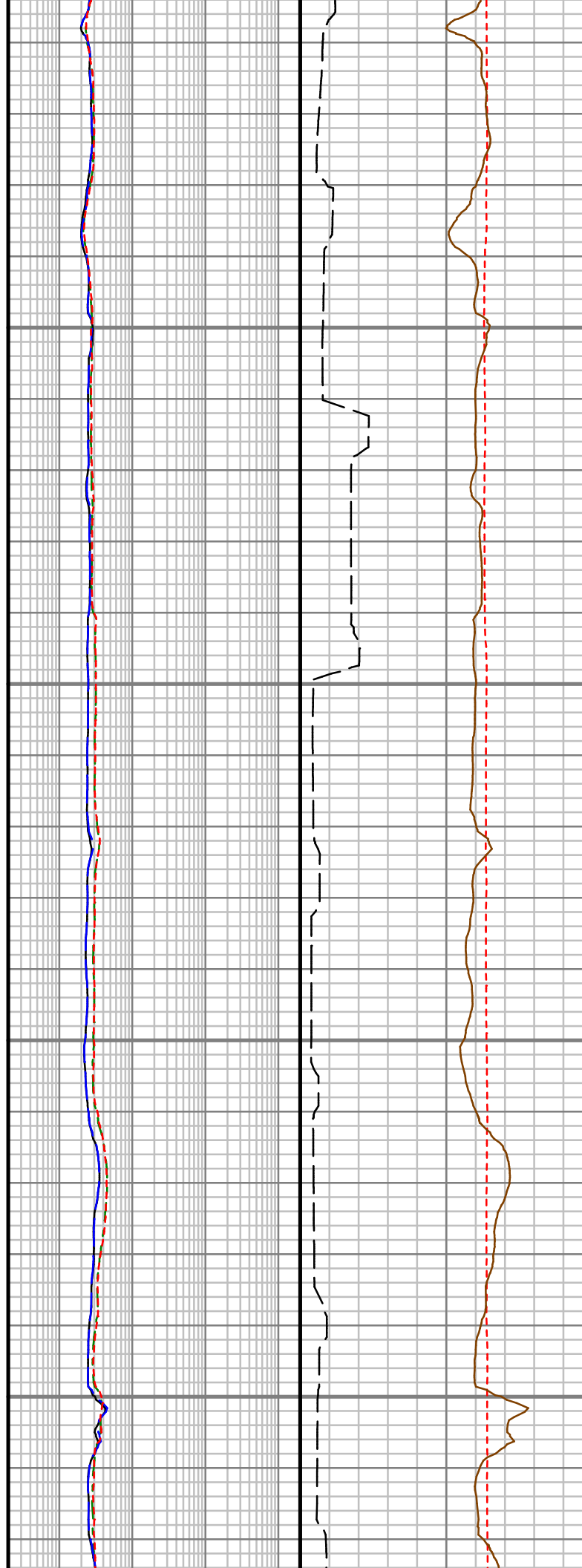


2000

2050

2100

2150



Inc: 48.54 deg Az:  
316.62 deg TVD:  
1839.73 ft

S: 42 MD: 1983.00 ft  
Inc: 50.61 deg Az:  
319.29 deg TVD:  
1859.83 ft

S: 43 MD: 2015.00 ft  
Inc: 53.26 deg Az:  
322.01 deg TVD:  
1879.56 ft

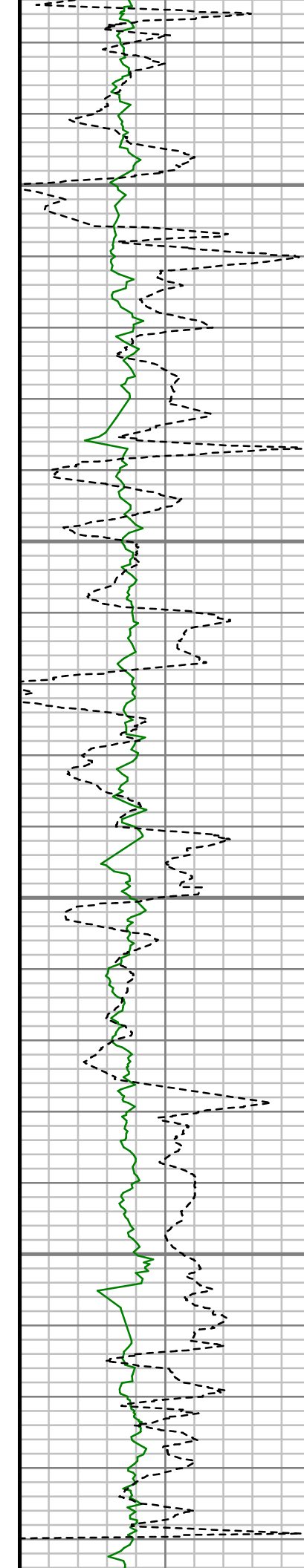
S: 44 MD: 2046.00 ft  
Inc: 54.58 deg Az:  
324.75 deg TVD:  
1897.82 ft

S: 45 MD: 2077.00 ft  
Inc: 56.57 deg Az:  
326.79 deg TVD:  
1915.35 ft

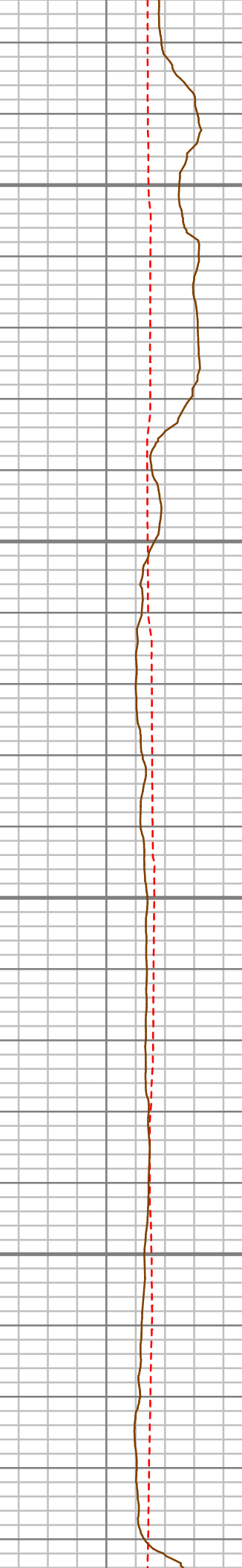
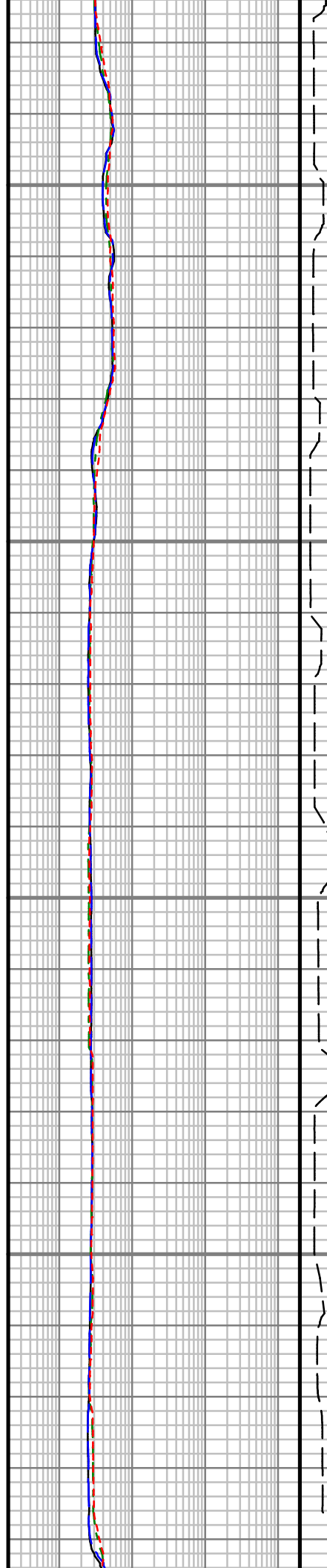
S: 46 MD: 2108.00 ft  
Inc: 59.20 deg Az:  
328.52 deg TVD:  
1931.83 ft

S: 47 MD: 2139.00 ft  
Inc: 61.76 deg Az:  
330.24 deg TVD:  
1947.10 ft

S: 48 MD: 2170.00 ft  
Inc: 64.16 deg Az:



2200  
2250  
2300  
2350



Inc: 67.16 deg Az:  
332.75 deg TVD:  
1961.20 ft

S: 49 MD: 2201.00 ft  
Inc: 65.67 deg Az:  
336.62 deg TVD:  
1974.34 ft

S: 50 MD: 2233.00 ft  
Inc: 67.79 deg Az:  
335.32 deg TVD:  
1986.98 ft

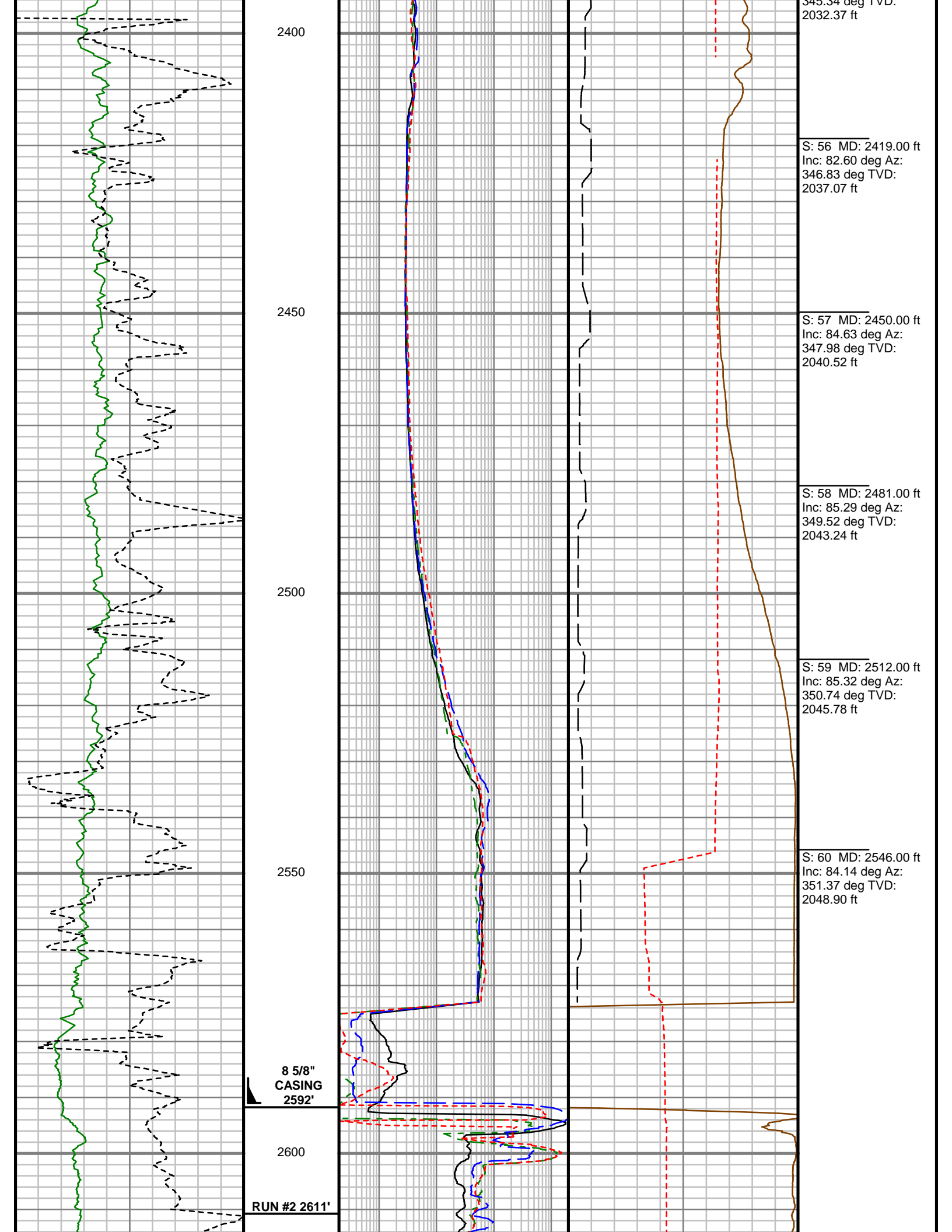
S: 51 MD: 2264.00 ft  
Inc: 69.51 deg Az:  
336.82 deg TVD:  
1998.27 ft

S: 52 MD: 2295.00 ft  
Inc: 71.15 deg Az:  
339.07 deg TVD:  
2008.70 ft

S: 53 MD: 2326.00 ft  
Inc: 73.44 deg Az:  
341.37 deg TVD:  
2018.13 ft

S: 54 MD: 2357.00 ft  
Inc: 76.72 deg Az:  
343.55 deg TVD:  
2026.11 ft

S: 55 MD: 2388.00 ft  
Inc: 79.97 deg Az:  
345.34 deg TVD:  
2033.11 ft



2400

2450

2500

2550

2600

8 5/8"  
CASING  
2592'

RUN #2 2611'

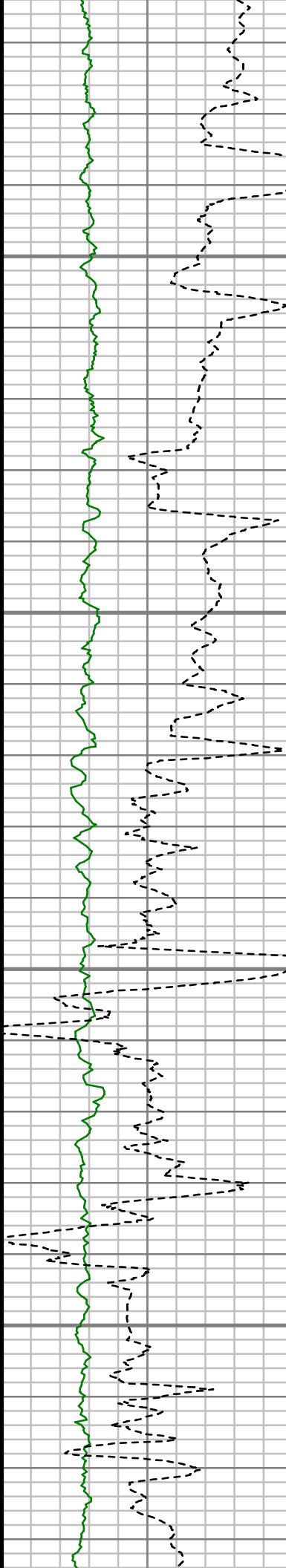
S: 56 MD: 2419.00 ft  
Inc: 82.60 deg Az:  
346.83 deg TVD:  
2032.37 ft

S: 57 MD: 2450.00 ft  
Inc: 84.63 deg Az:  
347.98 deg TVD:  
2040.52 ft

S: 58 MD: 2481.00 ft  
Inc: 85.29 deg Az:  
349.52 deg TVD:  
2043.24 ft

S: 59 MD: 2512.00 ft  
Inc: 85.32 deg Az:  
350.74 deg TVD:  
2045.78 ft

S: 60 MD: 2546.00 ft  
Inc: 84.14 deg Az:  
351.37 deg TVD:  
2048.90 ft



RUN #3 2635'

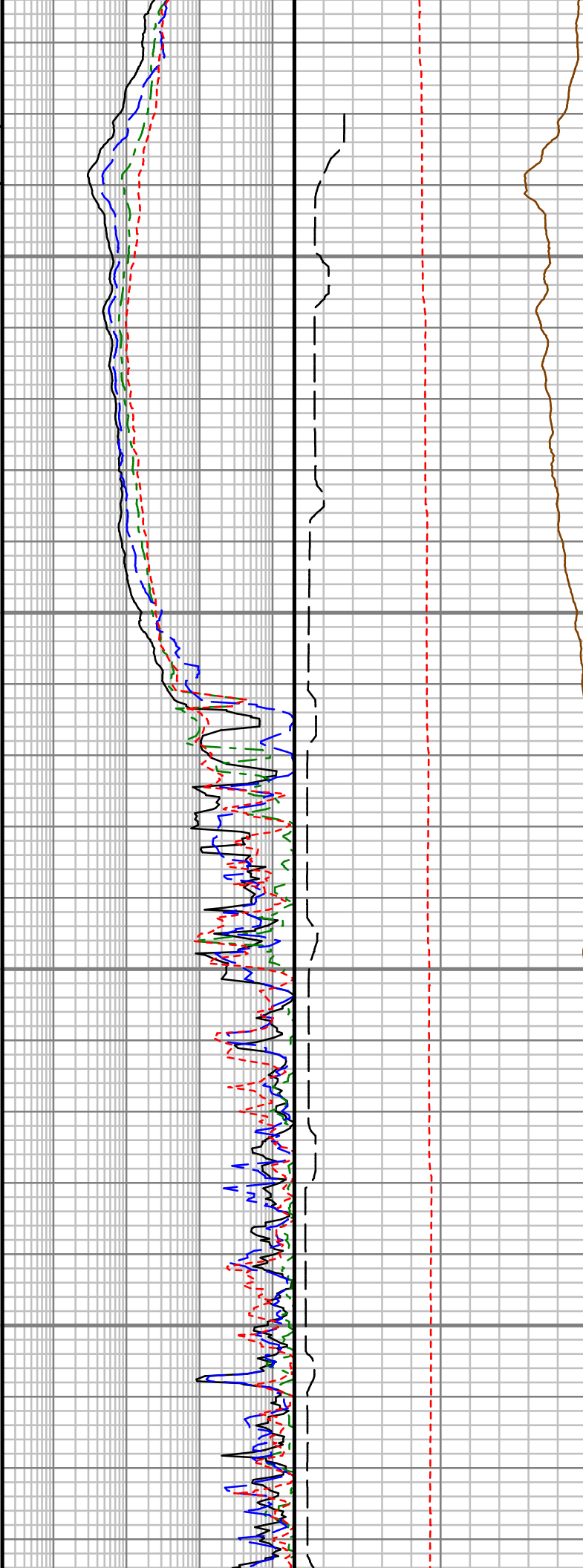
REMARK #1

2650

2700

2750

2800



S: 61 MD: 2623.00 ft  
 Inc: 87.76 deg Az:  
 355.49 deg TVD:  
 2054.34 ft

S: 62 MD: 2654.00 ft  
 Inc: 89.34 deg Az:  
 356.11 deg TVD:  
 2055.13 ft

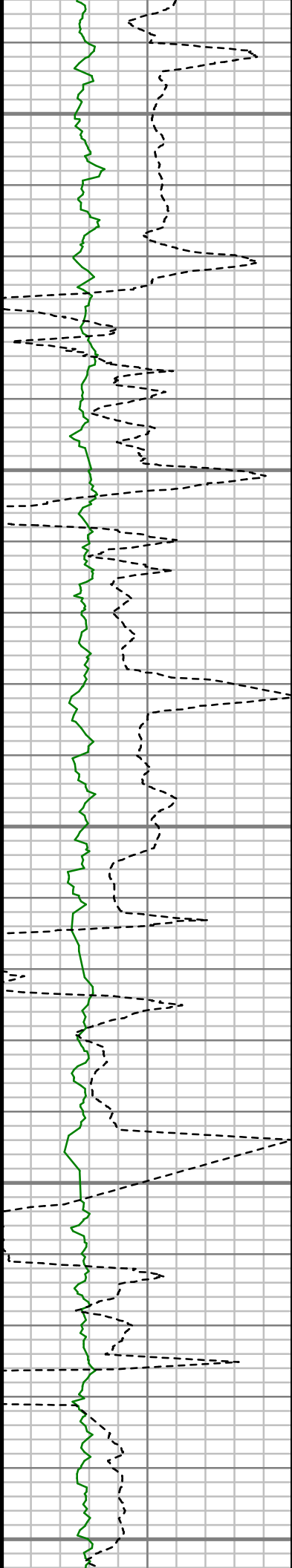
S: 63 MD: 2684.00 ft  
 Inc: 93.21 deg Az:  
 355.93 deg TVD:  
 2054.46 ft

S: 64 MD: 2715.00 ft  
 Inc: 95.94 deg Az:  
 356.20 deg TVD:  
 2051.99 ft

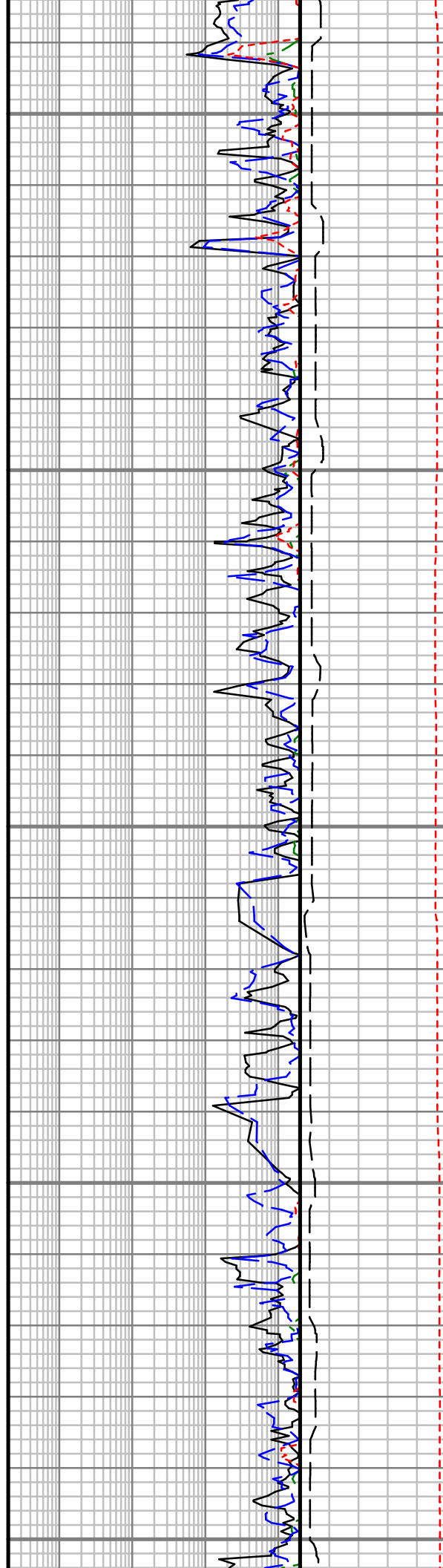
S: 65 MD: 2745.00 ft  
 Inc: 94.97 deg Az:  
 356.11 deg TVD:  
 2049.14 ft

S: 66 MD: 2775.00 ft  
 Inc: 92.68 deg Az:  
 355.67 deg TVD:  
 2047.14 ft

S: 67 MD: 2806.00 ft  
 Inc: 91.80 deg Az:  
 355.76 deg TVD:  
 2045.92 ft



2850  
2900  
2950  
3000  
3050



S: 68 MD: 2837.00 ft  
Inc: 91.45 deg Az:  
356.46 deg TVD:  
2045.04 ft

S: 69 MD: 2867.00 ft  
Inc: 91.45 deg Az:  
356.02 deg TVD:  
2044.28 ft

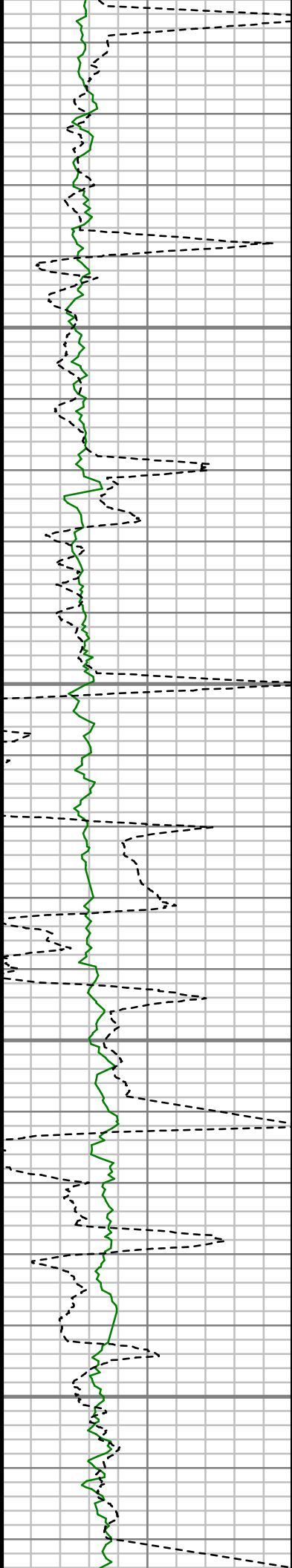
S: 70 MD: 2899.00 ft  
Inc: 91.10 deg Az:  
355.41 deg TVD:  
2043.57 ft

S: 71 MD: 2930.00 ft  
Inc: 91.36 deg Az:  
354.97 deg TVD:  
2042.90 ft

S: 72 MD: 2961.00 ft  
Inc: 91.28 deg Az:  
354.88 deg TVD:  
2042.19 ft

S: 73 MD: 2992.00 ft  
Inc: 91.54 deg Az:  
353.39 deg TVD:  
2041.43 ft

S: 74 MD: 3023.00 ft  
Inc: 92.24 deg Az:  
352.86 deg TVD:  
2040.41 ft

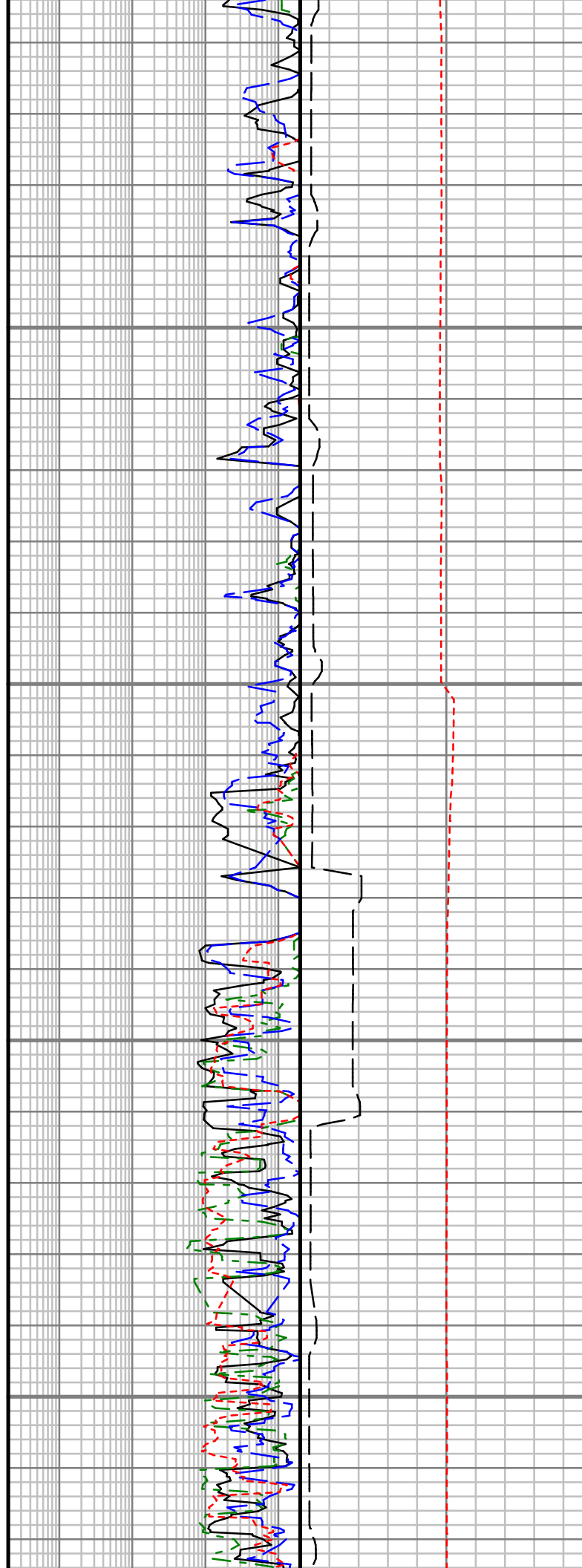


3100

3150

3200

3250



S: 75 MD: 3055.00 ft  
Inc: 91.98 deg Az:  
353.21 deg TVD:  
2039.23 ft

S: 76 MD: 3086.00 ft  
Inc: 91.89 deg Az:  
353.56 deg TVD:  
2038.18 ft

S: 77 MD: 3117.00 ft  
Inc: 92.15 deg Az:  
354.35 deg TVD:  
2037.09 ft

S: 78 MD: 3148.00 ft  
Inc: 92.95 deg Az:  
354.09 deg TVD:  
2035.71 ft

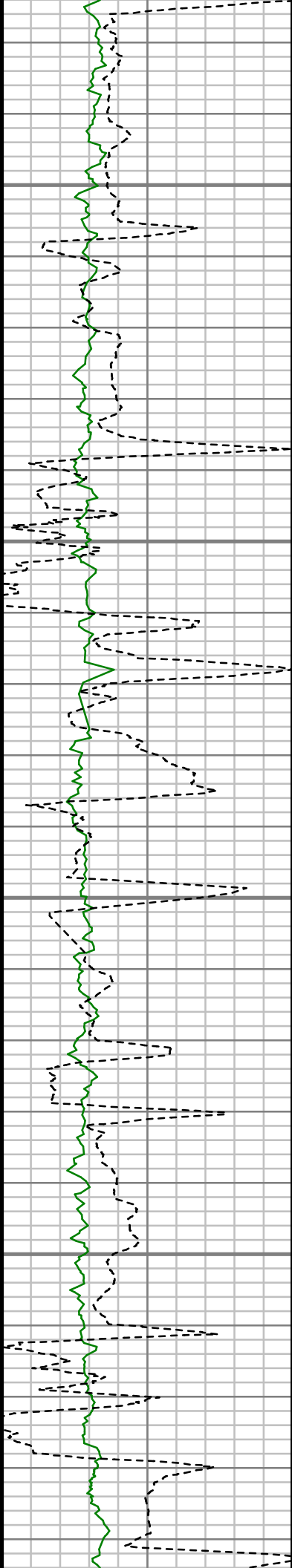
S: 79 MD: 3179.00 ft  
Inc: 93.47 deg Az:  
352.86 deg TVD:  
2033.97 ft

S: 80 MD: 3210.00 ft  
Inc: 91.63 deg Az:  
352.15 deg TVD:  
2032.59 ft

S: 81 MD: 3241.00 ft  
Inc: 90.22 deg Az:  
351.80 deg TVD:  
2032.09 ft

S: 82 MD: 3272.00 ft



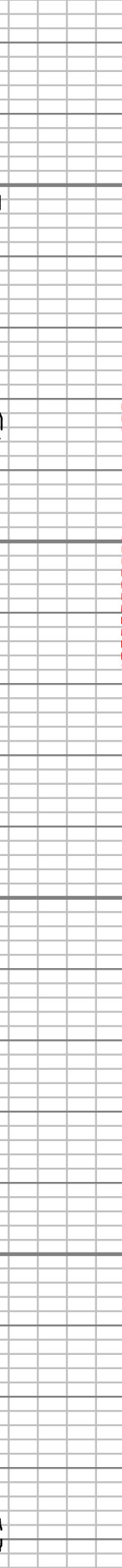
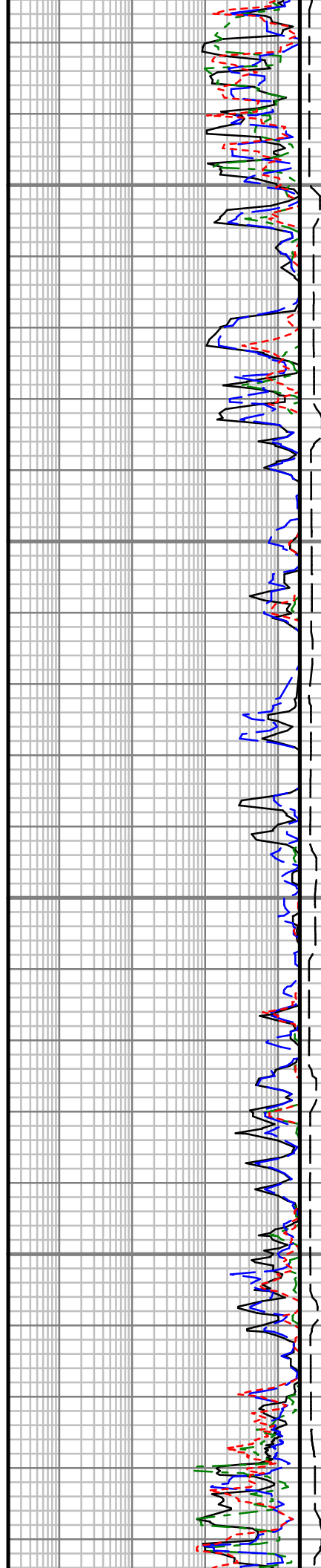


3300

3350

3400

3450



Inc: 89.78 deg Az:  
352.07 deg TVD:  
2032.09 ft

S: 83 MD: 3303.00 ft  
Inc: 89.34 deg Az:  
352.59 deg TVD:  
2032.33 ft

S: 84 MD: 3335.00 ft  
Inc: 87.85 deg Az:  
354.09 deg TVD:  
2033.12 ft

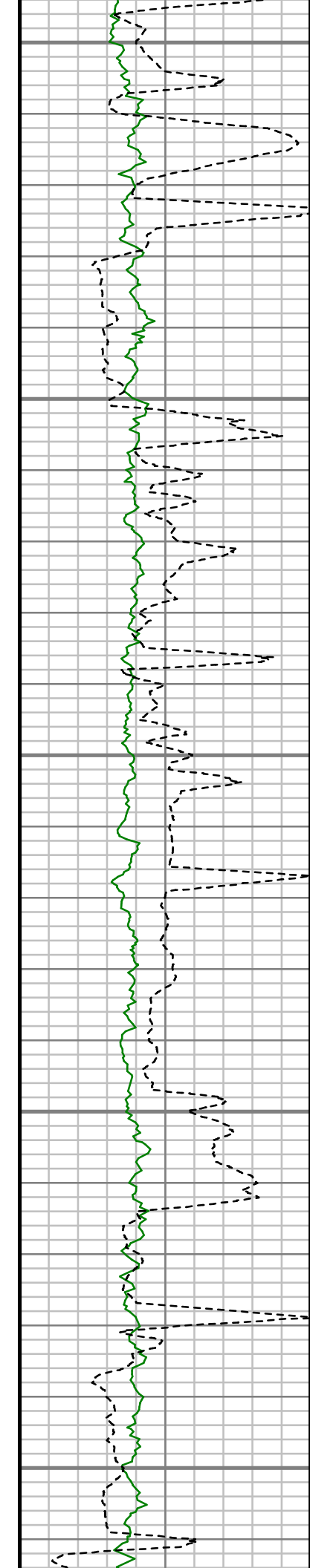
S: 85 MD: 3366.00 ft  
Inc: 88.02 deg Az:  
355.49 deg TVD:  
2034.24 ft

S: 86 MD: 3397.00 ft  
Inc: 90.92 deg Az:  
356.99 deg TVD:  
2034.52 ft

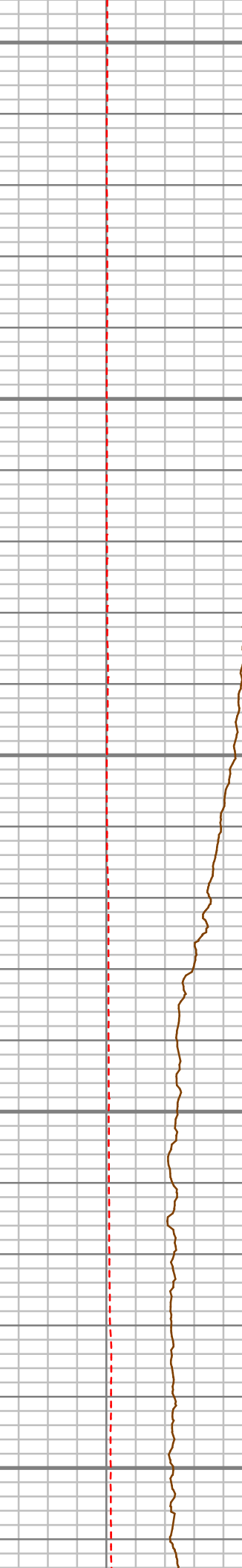
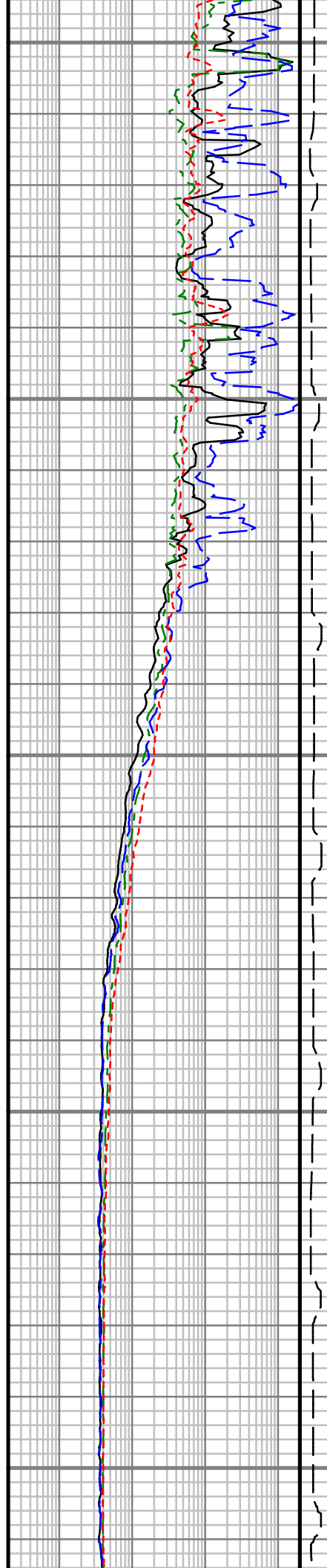
S: 87 MD: 3428.00 ft  
Inc: 91.98 deg Az:  
357.87 deg TVD:  
2033.74 ft

S: 88 MD: 3459.00 ft  
Inc: 92.33 deg Az:  
357.52 deg TVD:  
2032.57 ft

S: 89 MD: 3490.00 ft  
Inc: 91.71 deg Az:



3500  
3550  
3600  
3650  
3700



S: 90 MD: 3521.00 ft  
Inc: 90.13 deg Az:  
356.29 deg TVD:  
2031.48 ft

S: 91 MD: 3553.00 ft  
Inc: 91.36 deg Az:  
355.49 deg TVD:  
2030.98 ft

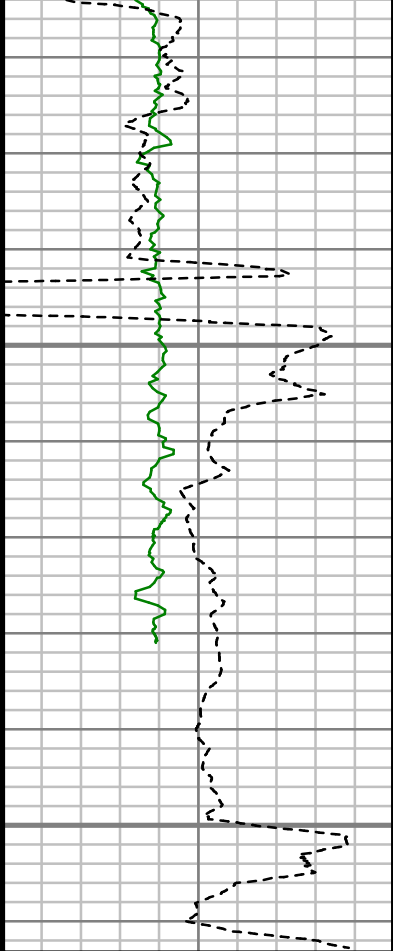
S: 92 MD: 3584.00 ft  
Inc: 93.03 deg Az:  
353.12 deg TVD:  
2029.37 ft

S: 93 MD: 3615.00 ft  
Inc: 94.26 deg Az:  
351.28 deg TVD:  
2027.40 ft

S: 94 MD: 3646.00 ft  
Inc: 93.21 deg Az:  
350.31 deg TVD:  
2025.38 ft

S: 95 MD: 3677.00 ft  
Inc: 91.89 deg Az:  
350.05 deg TVD:  
2024.00 ft

S: 96 MD: 3708.00 ft  
Inc: 92.22 deg Az:  
350.35 deg TVD:  
2023.00 ft

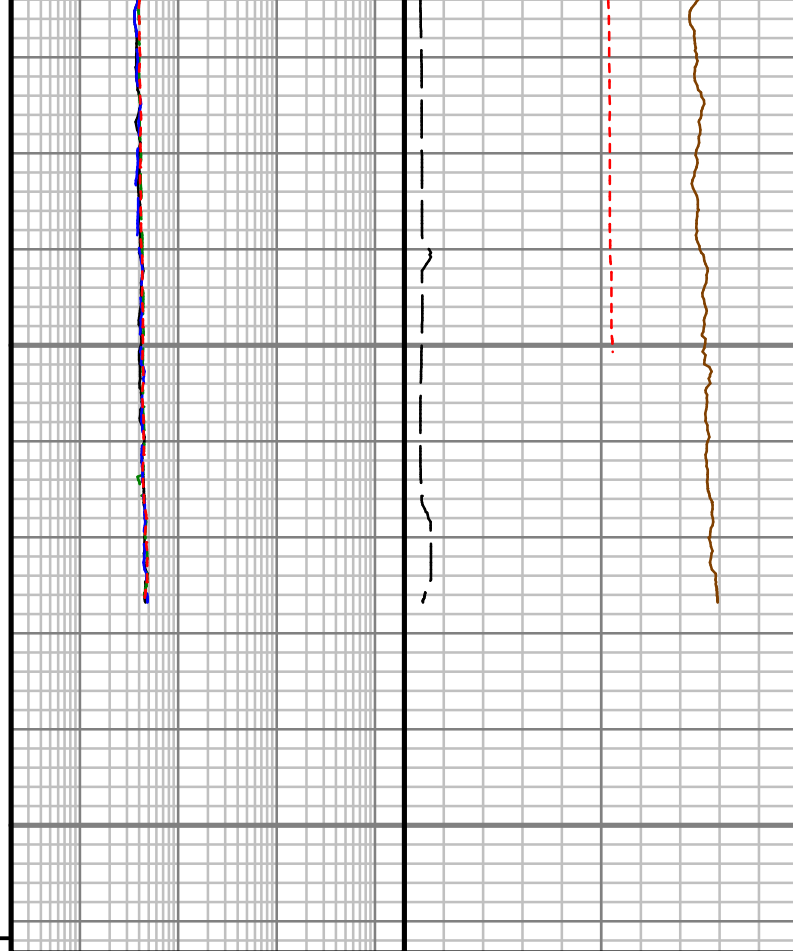


3750

3800

TD 3812"

MEASURED DEPTH  
1,240 (ft)



S: 97 MD: 3739.00 ft  
 Inc: 93.30 deg Az:  
 350.57 deg TVD:  
 2022.89 ft  
 S: 97 MD: 3747.00 ft  
 Inc: 93.80 deg Az:  
 350.80 deg TVD:  
 2020.90 ft

Rate of Penetration (ROP)		
500	Unit = ft/hr	0
GAIN - Gamma Ray (G-GR)		
0	Unit = aapi	150

Attenuation Resistivity, 33" (AR33)		
0.2	Unit = ohmm	2000
Phase Shift Resistivity, 33" (PR33)		
0.2	Unit = ohmm	2000
Attenuation Resistivity, 23" (AR23)		
0.2	Unit = ohmm	2000
Phase Shift Resistivity, 23" (PR23)		
0.2	Unit = ohmm	2000

Phase Shift Conductivity, 33" (PC33)		
1000	Unit = mmho/m	0
Tool Temperature (T-TEMP)		
50	Unit = °F	150
FET of Resistivity (FETR)		
0	Unit = hr	10

Comments

<b>Customer Name:</b>	TRIO PETROLRUM LLC
<b>Site Name:</b>	SECTION 23
<b>Well Name:</b>	HH-4 ST1
<b>Survey:</b>	HH4_ST
<b>Survey Date:</b>	11/26/2013
<b>Magnetic Declination:</b>	13.28 deg
<b>Grid Correction:</b>	1.11 deg
<b>North Reference:</b>	Grid North
<b>Calculation Method:</b>	Minimum Curvature
<b>Section (VS) Ref:</b>	0.00N (ft), 0.00E (ft), 341.22Azim (deg)

MD ft	Inc deg	Azim deg	TVD ft	VS ft	+N/-S ft	+E/-W ft	DLS 7100ft
50.00	0.00	0.00	50.00	0.00	0.00	0.00	Invalid
104.00	0.27	206.99	104.00	-0.09	-0.11	-0.06	0.50
229.00	0.17	308.01	229.00	-0.14	-0.26	-0.34	0.28
322.00	0.35	295.93	322.00	0.17	-0.06	-0.70	0.20
416.00	0.10	288.20	416.00	0.42	0.09	-1.03	0.26
509.00	0.64	221.70	509.00	0.21	-0.27	-1.45	0.65
602.00	0.73	277.09	601.99	0.22	-0.58	-2.39	0.69
696.00	0.24	13.00	695.99	0.65	-0.31	-2.94	0.85

MD ft	Inc deg	Azim deg	TVD ft	VS ft	+N/-S ft	+E/-W ft	DLS 7100ft
789.00	0.27	28.08	788.99	0.97	0.07	-2.79	0.08
881.00	0.50	108.29	880.98	0.87	0.14	-2.31	0.57
974.00	0.34	77.37	973.98	0.60	0.07	-1.65	0.29
1034.00	1.14	273.09	1033.98	0.80	0.14	-2.08	2.46
1064.00	2.19	277.28	1063.97	1.16	0.23	-2.94	3.50
1094.00	4.10	277.11	1093.92	1.88	0.43	-4.57	6.36
1125.00	6.02	285.03	1124.80	3.27	0.99	-7.24	6.60
1154.00	7.70	289.44	1153.59	5.32	2.03	-10.54	6.07
1184.00	8.19	290.76	1183.30	7.93	3.46	-14.44	1.74
1215.00	8.76	290.02	1213.96	10.81	5.05	-18.72	1.86
1246.00	10.03	288.64	1244.55	13.93	6.72	-23.50	4.17
1276.00	10.99	286.67	1274.04	17.18	8.38	-28.71	3.42
1307.00	12.16	284.13	1304.41	20.66	10.02	-34.71	4.10
1337.00	14.01	282.02	1333.63	24.24	11.55	-41.33	6.37
1368.00	16.44	280.54	1363.54	28.31	13.13	-49.31	7.95
1399.00	19.02	281.57	1393.07	33.01	14.95	-58.57	8.38
1429.00	21.23	282.53	1421.23	38.30	17.11	-68.66	7.45
1460.00	22.94	283.63	1449.96	44.46	19.75	-80.01	5.68
1490.00	24.23	282.50	1477.45	50.79	22.46	-91.70	4.57
1521.00	26.52	282.93	1505.46	57.73	25.39	-104.66	7.42

<b>MD</b> ft	<b>Inc</b> deg	<b>Azim</b> deg	<b>TVD</b> ft	<b>VS</b> ft	<b>+N-S</b> ft	<b>+E-W</b> ft	<b>DLS</b> 7100ft
1552.00	29.46	283.34	1532.83	65.42	28.70	-118.83	9.50
1582.00	31.40	284.92	1558.70	73.68	32.41	-133.56	6.99
1613.00	32.58	285.14	1584.99	82.82	36.67	-149.42	3.81
1643.00	34.73	286.15	1609.96	92.22	41.16	-165.43	7.43
1673.00	36.34	289.16	1634.37	102.58	46.45	-182.04	7.91
1704.00	37.23	293.70	1659.21	114.57	53.24	-199.30	9.23
1735.00	38.71	299.03	1683.65	128.09	61.71	-216.37	11.59
1765.00	39.98	303.24	1706.85	142.64	71.55	-232.64	9.86
1796.00	41.59	306.29	1730.33	158.93	83.10	-249.26	8.26
1828.00	43.78	308.56	1753.85	176.96	96.29	-266.48	8.37
1859.00	45.05	309.87	1775.99	195.35	110.01	-283.29	5.03
1890.00	46.36	311.98	1797.64	214.51	124.55	-300.05	6.46
1921.00	47.04	314.02	1818.90	234.39	139.93	-316.55	5.28
1952.00	48.54	316.62	1839.73	255.05	156.26	-332.69	7.86
1983.00	50.61	319.29	1859.83	276.72	173.79	-348.48	9.36
2015.00	53.26	322.01	1879.56	300.31	193.27	-364.44	10.64
2046.00	54.58	324.75	1897.82	324.15	213.38	-379.38	8.32
2077.00	56.57	326.79	1915.35	348.80	234.52	-393.76	8.39
2108.00	59.20	328.52	1931.83	374.32	256.70	-407.80	9.73

<b>MD</b> ft	<b>Inc</b> deg	<b>Azim</b> deg	<b>TVD</b> ft	<b>VS</b> ft	<b>+N-S</b> ft	<b>+E-W</b> ft	<b>DLS</b> 7100ft
2139.00	61.76	330.24	1947.10	400.72	279.91	-421.53	9.57
2170.00	64.16	332.75	1961.20	427.93	304.18	-434.70	10.58
2201.00	65.67	333.62	1974.34	455.73	329.23	-447.37	5.49
2233.00	67.79	335.32	1986.98	484.92	355.76	-460.03	8.25
2264.00	69.51	336.82	1998.27	513.67	382.15	-471.74	7.14
2295.00	71.15	339.07	2008.70	542.81	409.20	-482.70	8.64
2326.00	73.44	341.37	2018.13	572.34	436.99	-492.69	10.22
2357.00	76.72	343.55	2026.11	602.28	465.55	-501.71	12.57
2388.00	79.97	345.34	2032.37	632.59	494.79	-509.85	11.91
2419.00	82.60	346.83	2037.07	663.11	524.53	-517.22	9.71
2450.00	84.63	347.98	2040.52	693.74	554.59	-523.93	7.53
2481.00	85.29	349.52	2043.24	724.35	584.88	-529.95	5.38
2512.00	85.32	350.74	2045.78	754.88	615.32	-535.25	3.92
2546.00	84.14	351.37	2048.90	788.23	648.76	-540.51	3.93
2623.00	87.76	355.49	2054.34	863.27	725.04	-549.29	7.11
2654.00	89.34	356.11	2055.13	893.26	755.94	-551.55	5.48
2684.00	93.21	355.93	2054.46	922.25	785.86	-553.63	12.91
2715.00	95.94	356.20	2051.99	952.12	816.68	-555.75	8.83
2745.00	94.97	356.11	2049.14	980.98	846.48	-557.76	3.24
2775.00	92.68	355.67	2047.14	1009.93	876.33	-559.90	7.76

<b>MD</b> ft	<b>Inc</b> deg	<b>Azim</b> deg	<b>TVD</b> ft	<b>VS</b> ft	<b>+N/-S</b> ft	<b>+E/-W</b> ft	<b>DLS</b> 7100ft
2806.00	91.80	355.76	2045.92	1039.92	907.22	-562.22	2.85
2837.00	91.45	356.46	2045.04	1069.87	938.14	-564.32	2.54
2867.00	91.45	356.02	2044.28	1098.83	968.07	-566.29	1.46
2899.00	91.10	355.41	2043.57	1129.81	999.97	-568.68	2.21
2930.00	91.36	354.97	2042.90	1159.88	1030.85	-571.28	1.65
2961.00	91.28	354.88	2042.19	1189.99	1061.72	-574.02	0.40
2992.00	91.54	353.39	2041.43	1220.20	1092.55	-577.19	4.89
3023.00	92.24	352.86	2040.41	1250.52	1123.31	-580.90	2.84
3055.00	91.98	353.21	2039.23	1281.82	1155.05	-584.78	1.37
3086.00	91.89	353.56	2038.18	1312.10	1185.83	-588.35	1.17
3117.00	92.15	354.35	2037.09	1342.32	1216.64	-591.61	2.69
3148.00	92.95	354.09	2035.71	1372.50	1247.45	-594.73	2.69
3179.00	93.47	352.86	2033.97	1402.74	1278.20	-598.24	4.31
3210.00	91.63	352.15	2032.59	1433.11	1308.90	-602.28	6.37
3241.00	90.22	351.80	2032.09	1463.56	1339.59	-606.61	4.68
3272.00	89.78	352.07	2032.09	1494.02	1370.29	-610.96	1.65
3303.00	89.34	352.59	2032.33	1524.44	1401.01	-615.09	2.21
3335.00	87.85	354.09	2033.12	1555.72	1432.78	-618.80	6.60
3366.00	88.02	355.49	2034.24	1585.83	1463.63	-621.62	4.57

<b>MD</b> ft	<b>Inc</b> deg	<b>Azim</b> deg	<b>TVD</b> ft	<b>VS</b> ft	<b>+N/-S</b> ft	<b>+E/-W</b> ft	<b>DLS</b> 7100ft
3397.00	90.92	356.99	2034.52	1615.76	1494.56	-623.65	10.53
3428.00	91.98	357.87	2033.74	1645.52	1525.52	-625.04	4.43
3459.00	92.33	357.52	2032.57	1675.23	1556.47	-626.29	1.60
3490.00	91.71	356.29	2031.48	1705.06	1587.40	-627.96	4.44
3521.00	90.13	355.49	2030.98	1735.04	1618.32	-630.18	5.71
3553.00	91.36	355.14	2030.56	1766.07	1650.21	-632.79	4.00
3584.00	93.03	353.12	2029.37	1796.26	1681.02	-635.96	8.46
3615.00	94.26	351.28	2027.40	1826.63	1711.67	-640.16	7.15
3646.00	93.21	350.31	2025.38	1857.14	1742.21	-645.11	4.61
3677.00	91.89	350.05	2024.00	1887.73	1772.72	-650.39	4.34
3708.00	92.22	350.35	2022.89	1918.33	1803.25	-655.67	1.45
3739.00	93.30	350.57	2021.39	1948.89	1833.78	-660.80	3.55
3747.00	93.80	350.80	2020.90	1956.76	1841.66	-662.09	6.89



PROPAGATION RESISTIVITY  
GAMMA RAY

5" = 100' FEET MD