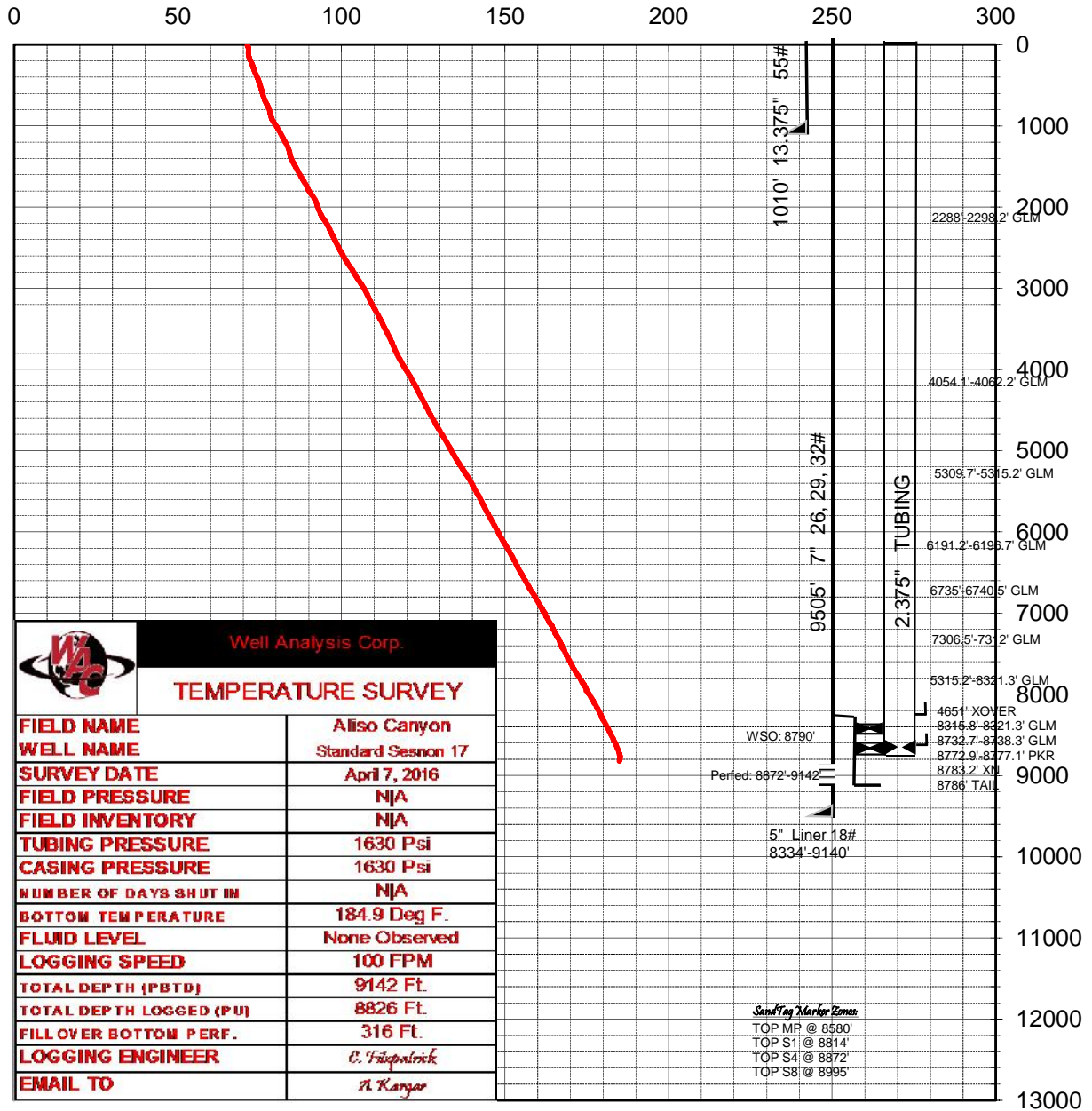



03700769_Survey_Temperature_04-07-2016(SS17)



 Well Analysis Corp. TEMPERATURE SURVEY	
FIELD NAME	Aliso Canyon
WELL NAME	Standard Sesnon 17
SURVEY DATE	April 7, 2016
FIELD PRESSURE	N/A
FIELD INVENTORY	N/A
TUBING PRESSURE	1630 Psi
CASING PRESSURE	1630 Psi
NUMBER OF DAYS SHUT IN	N/A
BOTTOM TEMPERATURE	184.9 Deg F.
FLUID LEVEL	None Observed
LOGGING SPEED	100 FPM
TOTAL DEPTH (PBD)	9142 Ft.
TOTAL DEPTH LOGGED (PU)	8826 Ft.
FILLOVER BOTTOM PERF.	316 Ft.
LOGGING ENGINEER	<i>E. Fitzpatrick</i>
EMAIL TO	<i>A.Ranger</i>

WSO: 8790'
 Perfed: 8872'-9142'
 5" Liner 18#
 8334'-9140'
 Sand/Tag Marker Zones:
 TOP MP @ 8580'
 TOP S1 @ 8814'
 TOP S4 @ 8872'
 TOP S8 @ 8995'