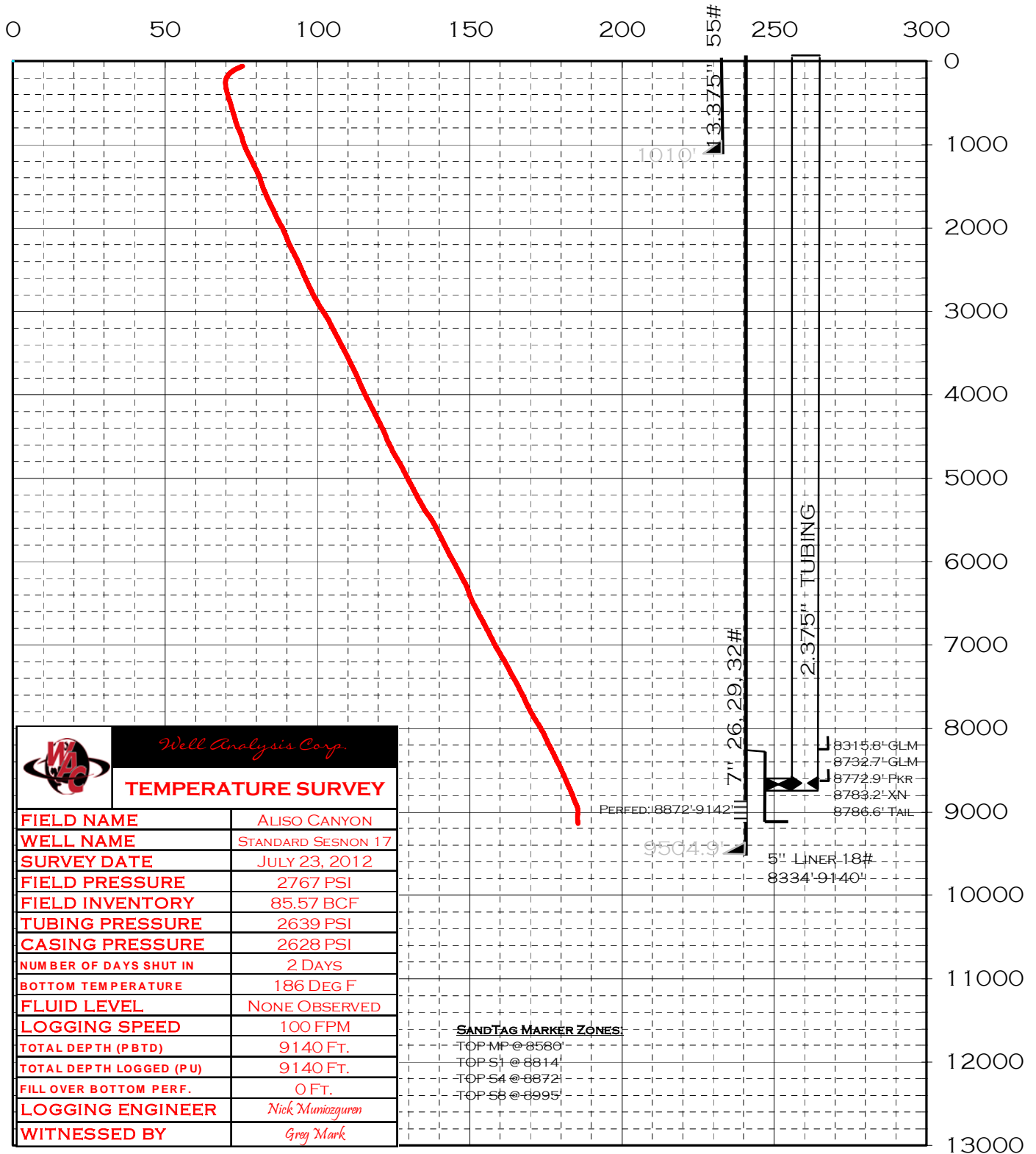




03700769_SURVEY_TEMPERATURE_07-23-2012(SS17)



TEMPERATURE SURVEY	
FIELD NAME	ALISO CANYON
WELL NAME	STANDARD SESNON 17
SURVEY DATE	JULY 23, 2012
FIELD PRESSURE	2767 PSI
FIELD INVENTORY	85.57 BCF
TUBING PRESSURE	2639 PSI
CASING PRESSURE	2628 PSI
NUMBER OF DAYS SHUT IN	2 DAYS
BOTTOM TEMPERATURE	186 DEG F
FLUID LEVEL	NONE OBSERVED
LOGGING SPEED	100 FPM
TOTAL DEPTH (PBDT)	9140 FT.
TOTAL DEPTH LOGGED (PU)	9140 FT.
FILL OVER BOTTOM PERF.	0 FT.
LOGGING ENGINEER	Nick Muniozgueren
WITNESSED BY	Greg Mark

SANDTAG MARKER ZONES:
 TOP MP @ 8580'
 TOP S1 @ 8814'
 TOP S4 @ 8872'
 TOP S8 @ 8995'