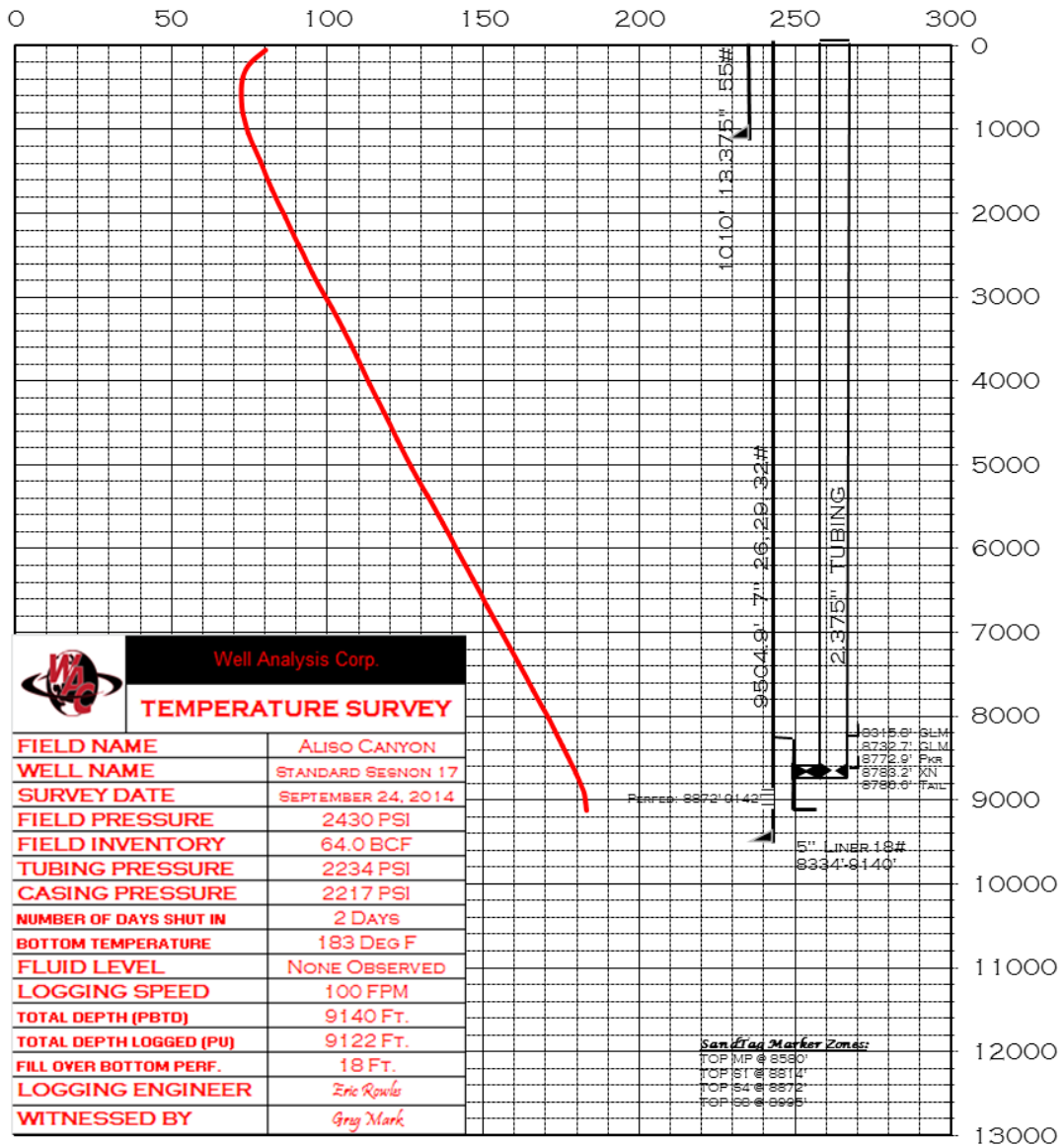




03700769_SURVEY_TEMPERATURE_09-24-2014(SS 17)



Well Analysis Corp.	
TEMPERATURE SURVEY	
FIELD NAME	ALISO CANYON
WELL NAME	STANDARD SESNON 17
SURVEY DATE	SEPTEMBER 24, 2014
FIELD PRESSURE	2430 PSI
FIELD INVENTORY	64.0 BCF
TUBING PRESSURE	2234 PSI
CASING PRESSURE	2217 PSI
NUMBER OF DAYS SHUT IN	2 Days
BOTTOM TEMPERATURE	183 DEG F
FLUID LEVEL	NONE OBSERVED
LOGGING SPEED	100 FPM
TOTAL DEPTH (PBD)	9140 FT.
TOTAL DEPTH LOGGED (PU)	9122 FT.
FILL OVER BOTTOM PERF.	18 FT.
LOGGING ENGINEER	Eric Rowles
WITNESSED BY	Greg Mark

Sand Tag Marker Zones:
 TOP MP @ 8580'
 TOP 1st @ 8814'
 TOP 2nd @ 8872'
 TOP 3rd @ 8995'